



Meadow Vale News

May 2013

Vol. 5 / 13

MEADOW VALE OFFICIALS

Mayor

Mary Hornek

593-1206

mshornek@gmail.com

Lights and Signs

Commissioner

TBA

Streets Commissioner

Linda Prys

423-0303

Drainage Commissioner

Byron Songer

254-3371

Safety Commissioner

Connie Borders

425-1930

Treasurer

Harold Clark

426-3996

City Clerk

Mary Andrade

396-5529

Monthly Meetings

Date: 3rd Monday of each month

Time: 7:00pm

Place: 9408 Blossom Lane

Other Numbers

Jefferson County Emergency #
911

Meadow Vale Police
574-5471

Lyndon Fire Department
425-7474

Rumpke Sanitation
568-3800

LG&E
589-3500

Animal Shelter
363-6609

Honoring Roy Fey

**Please join us for an Open House Reception in honor of
Roy Fey. Stop by to thank him for his many years of
service to the City of Meadow Vale.**

City Hall (9408 Blossom Lane)

Sunday, June 2nd

2-4pm

City Tax Reminders:

1) UNPAID TAXES

Please note that if you did not pay your 2012 taxes, those that remain unpaid will be sent to the city attorney for lien paperwork in June.

2) MAILING ADDRESS CHANGES

In some of your tax bills, I had multiple requests to change address or ownership information. I don't have any control over that particular information. It is generated by the PVA – Property Valuation Administrator for Jefferson County.

Any property transfers that take place after September 1, will not be recorded in time for the new tax bills, and therefore the bills will be sent to the original owner.

You can call the Sheriff's office to request a duplicate (or the city clerk will have a copy of what was sent to the original owner).

To make address changes or for errors – you need to contact the PVA directly.

Office of the Jefferson County PVA

Fiscal Court Building

531 Court Place, Suite 504

Louisville KY, 40202-3393

Phone (502) 574-6380

Monday - Friday: 8am - 4pm

Upcoming Holiday – Late Trash Pick up

MEMORIAL DAY, MONDAY MAY 27, 2013. There will be no collections on Memorial Day, May 27. All services for this week will be delayed by one day. Rumpke will operate Tuesday, May 28 through Saturday, June 1.

IN THIS ISSUE...

Minutes	2
Yard Waste Tips	3
City Calendar	4
Recycle Calendar	5
Local Ad	6

MINUTES

City of Meadow Vale

April 15, 2013

Mayor: Mary Hornek
Commissioners: Connie Borders, Linda Prys, Mary Hornek, Byron Songer
City Clerk: Mary Andrade
Treasurer: Harold Clark
Counselor: James Hodge, Esq., Lauren Chatman, Intern
Guests: Roy Fey, Sam Miller, Michael Clark and Officer Aaron Yates

Mayor Hornek called the meeting to order at 7:08 PM.

A. Guests Comments and Concerns:

- 1) Sam Miller voiced concerns regarding whether commission business could be publicly posted on personal or outside business websites.

B. City Commission Monthly Activity:

- 1) The March minutes were read and approved with changes to a spelling error and which month's minutes were approved at the last meeting. Motion to approve by Com. Prys, second by Com. Borders and passed by unanimous vote. Mayor Hornek requested that both the minutes and the financial reports be distributed to the commission the week prior to the meeting.
- 2) Mayor Hornek presented the city's financial report for the treasurer. The report was reviewed, motion to approve by Com. Prys, second by Borders. Approved by unanimous vote. Mayor Hornek mentioned that we may be changing the format of the financial report to better align with Kentucky Revenue Statute. Guest Sam Miller recommended charts in the new format. The bank statements were circulated and the budget figures were circulated for review at the next meeting. Mayor Hornek will be contacting commissioners individually to talk about expenses within their areas. Com. Songer requested a narrative of fluctuations in the budget and that those fluctuations be noted in the monthly minutes.
- 3) Change in Commission duties: Mayor Hornek reported that Connie Borders is the commissioner with the most experience, she will be taking over as the safety commissioner. Chief Henson will report immediate needs to the Mayor as an at-will employee. The new commissioner will take over the duties of Lights and Signs.
- 4) Lights & Signs: Two signs were dug up on Hounz lane. One was regarding the previous speed hump and the was a sign post with no sign. Also the 35 MPH sign was replaced on Hounz Lane – no cost involved. Mayor Hornek suggested that we remove the city mailbox on Somerford as it isn't used anymore.
- 5) Streets: Com. Prys invited Louisville Paving to come out and look at our streets to note the condition. His opinion was that we do not currently need any paving. He said not to do the blackened coating and he said that a wild guess for 4 miles of paving would be around \$267,000. He said to continue to keep up the maintenance. Counselor Hodge mentioned that the average life of pavement is 16 years. Com. Prys also called True Green – they recently put a weed killer, pre-emergent and fertilizer on the berm. Com. Prys will seek out 3 bids for the berm and 3 bids for filling the cracks in the roads. Counsel Hodge mentioned that the amount of road funds that we receive is related to the amount of gas sold in the area.
- 6) Drainage: Com. Songer reported that MSD has been in Meadow Vale, but appears to have left the area. MSD is going around in the neighborhoods as a part of the abatement program and specifying their grey water. They are checking the manholes.
- 7) Safety: Mayor Hornek met with Marty Nemes with KLC to review our insurance surveys. We are doing an inventory of what policies we currently have. It contains our liability limits and workers comp. She met with Chief Henson, Mark Filburn and Brian Dickey with KLC to review our police Score Card. Our score dropped based on a loss of critical policies in the policy manual, that we will correct immediately. They also sent us information about OSHA requirements are for our police cars.
- 8) Mayor Hornek requested a motion to purchase the KLC Handbook. Comm. Songer moved that we purchase four KLC Handbooks at about the amount of \$200, second by Borders. Unanimously approved.
- 9) Counsel asked who should be assigned to the financial accounts. We currently need to have two people. Com. Prys is currently listed and will stay on the account, Mayor Hornek will be added.
- 10) Be it resolved that The City Commission of the City of Meadow Vale of Kentucky that mayor Mary Hornek and Commissioner Linda Prys are hereby authorized to conduct the business of banking for the City of Meadow Vale at Chase Bank and Morgan Stanley and FISN, this the 15th day of April, 2013 at Louisville, KY. So presented by Com. Prys. Second by Com. Borders, approved unanimously.
- 11) Com. Prys moved to appoint Connie Borders as Mayor Pro Tem. Second by Songer, Unanimously approved, Borders abstained. Connie Borders was sworn in as Mayor Pro Tem by notary Jim Hodge.
- 12) Mayor Hornek mentioned that the yard sale will be on May 11 and that we will have the same date as Rolling Hills and Westwood. Roy Fey mentioned that we have yard signs we will make the changes.

Com. Borders motioned to adjourn at 8:28 pm, second by Com. Prys. Unanimously approved.

These minutes are considered unapproved until acted upon by the Council, signed by the Mayor and signed by the Clerk. The City of Meadow Vale allows a public comment section during its meetings. The public comments are summarized in the City Council minutes. The views expressed do not necessarily represent the views of the City of Meadow Vale.

YARD WASTE COLLECTION PROGRAM

The Jefferson County Solid Waste District bans the mixture of yard waste with municipal solid waste. All yard waste is collected separately from residential waste.

Yard waste should be prepared in one of the following ways:

- ◆ Placed loosely in a 30-35 gallon can clearly labeled "YARD WASTE".
- ◆ Placed in 30-35 gallon paper yard waste bags.
- ◆ Placed in 30-35 gallon plastic bags.
- ◆ Brush and branches should be cut and bundled. Branches should not exceed four feet (4') in length and three (3") in diameter or weigh more than 75 pounds per bundle.

Yard waste is collected at the curb. If yard waste and residential waste are collected at the curb on the same day, there should be a separation between the two waste streams to make identification easier for the collectors. All yard waste is taken to a composting landfill.

Yard waste includes the following:

1. Grass, weeds, and other lawn herbaceous materials.
2. Shrubbery and plant clippings.
3. Twigs, sticks, small branches within the above guidelines.
4. Leaves.

Yard waste does not include the following:

1. Lumber
2. Logs, stumps, or firewood.
3. Tree branches uncut or exceeding the above guidelines.
4. Large amounts of dirt or gravel.

Rumpke will collect Christmas trees for municipalities with yard waste collection. Trees must be free of decorations and may be placed at the curb uncut. Rumpke reserves the right to place limits on the amount of yard waste collected from individual residential units following severe storms, tornados, or other periods of severe weather. In any event, unless otherwise specified, Rumpke will abide by the guidelines of the Yard Waste Collection Program.

GUIDELINES FOR BULKY ITEM PICK-UP

DO'S

1. Please call Rumpke Customer Service at 502-568-3800 to advise of extra item prior to next service day.
2. Place all items at the curb. Have items out at whatever time our trucks are permitted to be in your city, usually 6:00 AM or 7:00 AM. Depending on the route, a separate truck might be sent to retrieve the extra item.
3. All loose items should be in containers or bundled. No container or bundle should weigh in excess of 75 pounds.
4. Large items, such as appliances or furniture, may be included. Any appliance with CFCs must have the CFCs removed by a qualified service person. They will affix a sticker to the appliance. We cannot accept such an item without a sticker.
5. If you have an item that could cut or puncture someone, such as broken glass, it should be placed in a secure container or bundled and labeled so as to eliminate the possibility of injury. It may be necessary to tape some glass to prevent shattering.

DON'T'S

1. No paint, cleaning fluids, motor oil, or other liquids.
2. No construction debris, such as bricks, concrete blocks, shingles, or lumber.
3. No scrap metal.
4. No rolls of carpet. We may accept carpet that has been cut up 2' X 2' and bundled.
5. No tires.
6. No auto or marine batteries.
7. No medical waste
8. No yard waste, tree limbs, stumps or large amounts of sand, dirt, or gravel.
9. No CFCs or freon.
10. No hazardous waste.
11. We cannot accept large screen TVs or large pieces of glass, such as in a storm door unless the guidelines above are followed.

Rumpke will be flexible, when possible, but we must obey all regulations governing waste collections and disposal and we must provide for employee safety. Thank you for your cooperation.

CITY CALENDAR



May

- 3 **KENTUCKY DERBY** - From humble beginnings to international acclaim, the Kentucky Derby has become the most famous horse race in the world. Annually drawing over a hundred thousand fans, it is the longest consecutive running sporting event in the U.S. rightly deserving its slogan as being "the most exciting two minutes in sports."
- 5 **CINCO DE MAYO** - On May 5, 1862, the Mexican army defeated the French army at the Battle of Puebla. This single military battle signified defeat of a European colonial power and a victory for the Mexican people. This date has come to celebrate Hispanic and Mexican culture.
- 6-31 **HOMETOWN CELEBRATION** - Louisville's Hometown Tourist Celebration has been encouraging residents to "be a tourist in their own hometown" for more than a decade. In addition to the 2-for1 discounts (May 6-31, 2013) at 55 area attractions, 15 hotels and 14 restaurants, there are a half a dozen events to which the public is invited. During the month, the discount offers are valid for anyone with a Kentucky or Indiana ID, local college ID or military ID.
<http://www.gotolouisville.com/hometown-tourist-celebration>.
- 12 **MOTHER'S DAY**
- 20 **CITY OF MEADOW VALE MEETING, 7PM, 9408 BLOSSOM LANE**
- 27 **MEMORIAL DAY** - Formerly known as Decoration Day, it commemorates U.S. soldiers who died while in the military service. Begun as a ritual of remembrance and reconciliation after the Civil War, by the early 20th century, Memorial Day was an occasion for more general expressions of memory of deceased relatives, whether they had served in the military or not.

June

- 7-9 **LOUISVILLE'S GREEK FESTIVAL** - Friday, June 7 - Sunday, June 9, Fri. & Sat. 11am-10pm; Sun. Noon-8pm. Downtown on the Belvedere - 5th & Main. Louisvillegreekfest.com
- 7,8 **LYNDON AREA FAIR** - Robsion Park off LaGrange Rd., Fri. June 7 - Sat. June 8. Fri. 4-10pm & Sat. Noon-10p.m.
- 14 **FLAG DAY** - The flag was authorized by Congress June 14, 1777. This date is now observed as Flag Day. The United States Flag is unique in the deep and noble significance of its message of national independence, individual liberty, idealism, & patriotism.
- 16 **FATHER'S DAY** - Father's Day is the perfect day to show and tell your father and other special guys in your life exactly how much they mean to you.
- 17 **CITY OF MEADOW VALE MEETING, 7PM, 9408 BLOSSOM LANE**

CONTENT DISCLAIMER

The intent of this publication is to provide information to the neighborhood about its local government; as well as news about the larger community of Metro Louisville. Sometimes content from other publications is included when it catches the eye. We do not pretend to be a professional news organization and by no means is the City of Meadow Vale attempting to put forth any political agenda. We are simply attempting to create a local source of local information about the community. Therefore, any views expressed in the newsletter are those of the individuals who expressed them and not the views of any official position of the City of Meadow Vale.

Mayor Moment

As most of you are aware, we have had many recent changes within our local government. With this change we hope to bring a new perspective and sense of pride to our wonderful neighborhood.

My family and I have been residents for 25 years and consider Meadow Vale to be our "diamond in the rough." Over the years we have seen many changes, most for the better. Currently, I see a trend we are not accustomed to. Our city's appearance is somewhat lacking. Personally, I would like to see us as a community make it a priority to retain the wonderful reputation that so many have worked hard to accomplish.

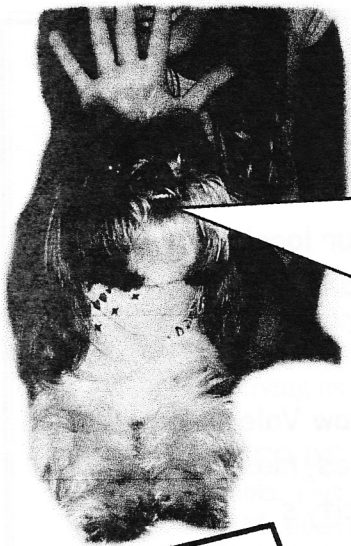
With the economic downturn, we have experienced a vast turnover in homeownership. As it is known, we are experiencing a cyclical change. There are younger homeowners moving into the city and hopefully bringing with them an interest and motivation to help Meadow Vale be the best neighborhood in Jefferson County. We welcome you!

In the coming months the city commission desires to create an environment where each member of the community can express and contribute their talents. We have many opportunities for everyone who wants to be involved with the neighborhood. If you have an area of expertise you would like to share with others in the community, please contact one of the city commissioners.

We have a website with much information available, from a calendar of events to city ordinances. That address is: www.neighborhoodlink.com put in our zip code, 40242, then select Meadow Vale. There you will find a wealth of information as well as an electronic copy of the newsletter. It is our goal to keep everyone informed.

We look forward to seeing you at the celebration honoring former Mayor Roy Fey on Sunday, June 2nd, from 2-4 pm, at Meadow Vale City Hall, located in Westport Plaza shopping center, across from the El Nopal restaurant.

Mr. Fey has devoted many years of service to our community. He has made multiple contributions over the past 19 years of his service, first as a commissioner then mayor. Please join us in saying "thank you" for his tireless efforts to make our city a better place to live.



"MY NAME IS BUZZ
AND THIS IS MY GIRL
ALAYNA.
I HIGHLY RECOMMEND
HER FOR YOUR PET SITTING
AND WALKING NEEDS."
"And making goofy pictures.
Stop that!"



"WE HIGHLY RECOMMEND
ALAYNA!"

"She's great at
duck care!"



Alayna B.
502-296-4455
Meadowvale
Neighborhood

\$5
per day
per pet
pet sitting

\$2
dog walking
per dog

Pet Sitting
and Walking

"I wish we could
go for a walk."



"Mommy is so busy.
We could call Alayna
if our paws could dial
one number at a time." :{



Real Kentucky Meats
Straight from the farm.
Homestead!

Your local stewards of the animals and land!



Where the Animals "Run" on GRASS

"We raise our animals in a natural environment to reduce their stress.
We do not feed or inject chemicals in or on our animals."

Jay or Eva Jane King & Family

Brian Baxter
502-299-1017
2608 Welsford Way

Home Delivery Available
Recreating a Kentucky heritage
of neighbor helping neighbor

"We make every effort to deliver food with the
greatest amount of naturally developed
vitamins, minerals, and enzymes to nourish your body."



Meats!

Pasture Raised U.S.D.A. Inspected Meats

Beef	Pork	Turkey*	Guinea*
Duck	Lamb	Goose*	Buffalo*
Chicken	Sheep		Rabbit*

*seasonal

Whole Cow Ground Beef

www.ridgeacreshomestead.com



Union Star, KY 40171
The respected community of Mennonites



Chicken



Duck
(seasonal)

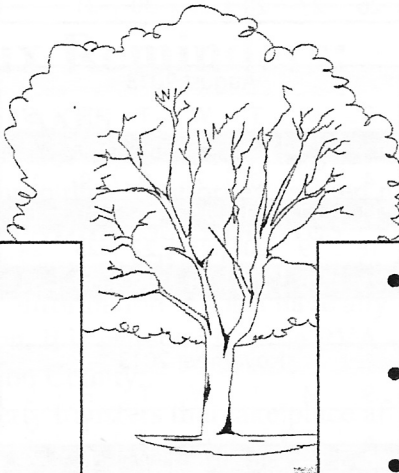


Goose
(seasonal)



Prepare your lawn for Spring!!

**Mike's
Lawn Care & Landscaping LLC
(502) 807-2580**



- Mowing
- Landscape services
- Yard Design

- Maintenance of lawns
- Trimming small trees & shrubs
- Cleaning out beds

Over 30 years of experience!!

Free Estimates

Senior Citizen Discount

Residential & Commercial

No Job Too Small!!

2013 Recycling Calendar

January 2013						
S	M	T	W	T	F	S
		1	2	3	4	5
6	7	8	9	10	11	12
13	14	15	16	17	18	19
20	21	22	23	24	25	26
27	28	29	30	31		

February 2013						
S	M	T	W	T	F	S
					1	2
3	4	5	6	7	8	9
10	11	12	13	14	15	16
17	18	19	20	21	22	23
24	25	26	27	28		

March 2013						
S	M	T	W	T	F	S
					1	2
3	4	5	6	7	8	9
10	11	12	13	14	15	16
17	18	19	20	21	22	23
24	25	26	27	28	29	30

April 2013						
S	M	T	W	T	F	S
	1	2	3	4	5	6
7	8	9	10	11	12	13
14	15	16	17	18	19	20
21	22	23	24	25	26	27
28	29	30				

May 2013						
S	M	T	W	T	F	S
			1	2	3	4
5	6	7	8	9	10	11
12	13	14	15	16	17	18
19	20	21	22	23	24	25
26	27	28	29	30	31	

June 2013						
S	M	T	W	T	F	S
						1
2	3	4	5	6	7	8
9	10	11	12	13	14	15
16	17	18	19	20	21	22
23	24	25	26	27	28	29

July 2013						
S	M	T	W	T	F	S
	1	2	3	4	5	6
7	8	9	10	11	12	13
14	15	16	17	18	19	20
21	22	23	24	25	26	27
28	29	30	31			

August 2013						
S	M	T	W	T	F	S
				1	2	3
4	5	6	7	8	9	10
11	12	13	14	15	16	17
18	19	20	21	22	23	24
25	26	27	28	29	30	31

September 2013						
S	M	T	W	T	F	S
1	2	3	4	5	6	7
8	9	10	11	12	13	14
15	16	17	18	19	20	21
22	23	24	25	26	27	28
29	30					

October 2013						
S	M	T	W	T	F	S
		1	2	3	4	5
6	7	8	9	10	11	12
13	14	15	16	17	18	19
20	21	22	23	24	25	26
27	28	29	30	31		

November 2013						
S	M	T	W	T	F	S
					1	2
3	4	5	6	7	8	9
10	11	12	13	14	15	16
17	18	19	20	21	22	23
24	25	26	27	28	29	30

December 2013						
S	M	T	W	T	F	S
1	2	3	4	5	6	7
8	9	10	11	12	13	14
15	16	17	18	19	20	21
22	23	24	25	26	27	28
29	30	31				

Acceptable

Plastic: Plastic bottles and jugs (Soda, milk, detergent, shampoo & small-mouth bottles)

Glass: Clear, brown and green glass bottles and jars

Paper: Newspaper, glossy inserts, magazines and catalogs (up to 1" thick), cardboard (broken down into 2' x 2' pieces), mixed office paper, junk mail and paper bags

Cans: Aluminum and bi-metal beverage cans, steel food/tin cans, empty aerosol cans

* Labels do not need to be removed. Please rinse and flatten everything possible.

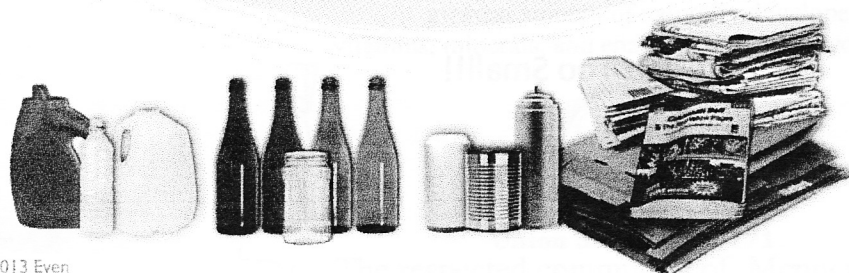
Not Acceptable

Plastic: Bowls, buckets or tubs, oil jugs, film, plastic bags, styrofoam

Glass: Lids, window or drinking glass, light bulbs, glass cookware

Paper: Pizza boxes, books, napkins, paper plates

Cans: Paint cans, coat hangers, steel scrap, pots and pans



1-800-678-6753

www.rumpkerecycling.com