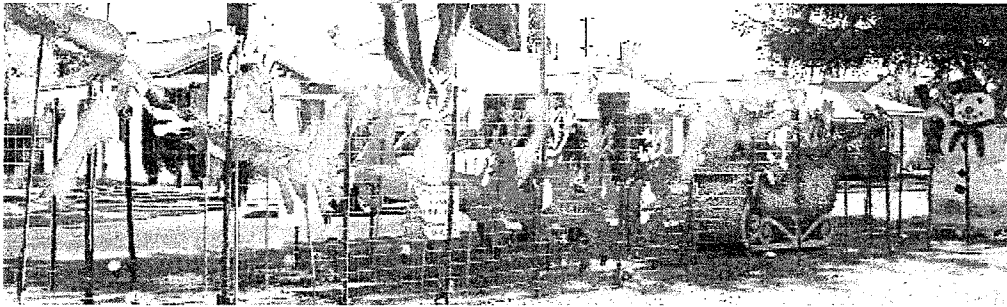


Daisy Avenue Christmas



Parade Photos courtesy of Vince Beisner



VOLUNTEERS LUNCHTIME
PIZZA DONATED BY BUONO'S PIZZERIA



ELDORADO
NATURE CENTER
& THEIR VAN

PORT OF
LONG BEACH
BOAT FLOAT

ENTERTAINMENT NIGHT!



FOLKLORICA



CLOGGERS

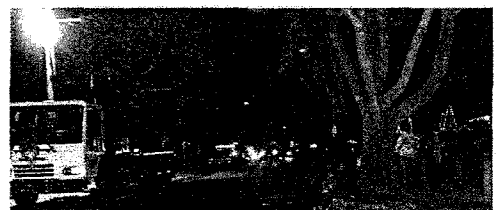


WANA Christmas Caroling

Saturday, December 15 was a chilly night. But it didn't stop neighbors and residents from joining in on the glorious singing that took place at the corner of 20th and Daisy. There was plenty of hot cider and hot chocolate to warm up all those who stopped by. Families, friends, and couples visiting the lane decorations would drop by to sing a few songs and then proceed with their stroll down the lane. Many stayed the whole time. Cars filled with excited children who came to see Santa would stop and enjoy the music. It truly was a wonderful night to spread some Holiday Cheer!



INTERNATIONAL CHOIR



HERE COMES THE PARADE!

Tree Lane & Parade



...HERE
COMES
SANTA
CLAUS

...RIGHT
DOWN
SANTA
CLAUS
"DAISY
AVENUE
CHRISTMAS
TREE
LANE"!



MYSTERY SANTA?



MARIA NORVELL, CTL CHAIR &
TIM PATTON, 7TH DISTRICT REP
PHOTO COURTESY DIANE LEJINS



PORT COMMISSIONER NICK AND WIFE
PATTI SRAMEK
PHOTO COURTESY DIANE LEJINS

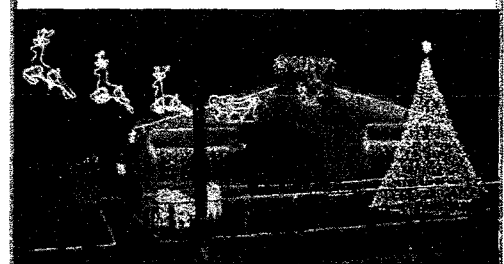


PARADERS DON & JULIE KNABE
PHOTO COURTESY DIANE LEJINS

DECORATED HOMES CONTEST WINNERS

1ST PLACES

2349 Daisy Avenue/Willow to Hill
2160 Daisy Avenue/PCH to Hill



2ND PLACES

2510 Daisy Avenue/Willow to Hill
2078 Daisy Avenue/PCH to Hill

3RD PLACES

2401 Daisy Avenue/Willow to Hill
2075 Daisy Avenue/PCH to Hill



The CASH AWARDS WILL BE
PRESENTED AT THE January 3
General Membership Meeting...
Come meet the WINNING FAMILIES!

NOTE: SADLY, NOT ALL HOMES' PHOTOS
WERE LIGHT ENOUGH AND COULD NOT BE
PRINTED.

**WANA
General
Membership
Meeting
JANUARY 3,
2008**

**7:00 PM at
Jackie Robinson School
2750 Pine Avenue—
28th & Pine**

**Lotsa FREE parking and
CHILD CARE PROVIDED.**

**CONGRATULATIONS,
JOAN GREENWOOD**

One of the last recommendations of the Long Beach 2010 Environmental Task Force is moving forward. In November, Mayor Foster announced 10 appointments to the 11-member Sustainable City Commission. The purpose of this Commission is to advise the City Council on environmental quality matters. Since this is a new advisory body, one of the first tasks in January will be to establish Bylaws. Each Council office submitted at least two names to the Mayor for consideration. From this list, the Mayor selected one person to represent each of the nine districts and two members-at-large. WANA's Secretary **Joan Greenwood** was chosen to represent the Seventh District.



Long Beach Alliance for Children with Asthma. One of the men is John Cross from the West Long Beach Association and recent appointee to the Redevelopment Agency Board. The other man is Jesse Marquez, a Clean Air activist from Wilmington.

MARK YOUR CALENDAR!

At our January 3, 2008 general meeting, our guest speaker will be Tom Reeves, City Prosecutor. Tom will make a very interesting presentation on what his department is doing about graffiti taggers. You won't want to miss it!!

Shopping Carts

By Michele York,

Neighborhood Services Bureau

On March 21, 2006 the Long Beach City Council adopted an ordinance entitled "Shopping Carts" that required business owners who provide shopping carts for the use by their customers to take certain steps to contain their shopping carts on business premises. This ordinance (LBMC 8.61) was enacted in response to the problem of carts found off business premises littering Long Beach neighborhoods. The City has created a comprehensive website (<http://www.longbeach-recycles.org/abandoned-carts>) to provide detailed information about the Long Beach Shopping Cart Containment Ordinance including information on frequently asked questions, store contacts, as well as links to other relevant websites. Please take a moment to review the information provided at this website. If you see an abandoned shopping cart in your neighborhood, call the store that owns the cart and request that the cart be retrieved. A list of Long Beach stores is included in the website. If you do not know which store to call, contact the California Shopping Cart Retrieval Corporation at (800) 252-4613 or you can go on-line at www.cscrc.net.



WANA • Wrigley Area Neighborhood Alliance, Inc.

**PO Box 6370,
Long Beach, CA 90806
Phone: 562-599-1822**

**WANA
BOARD OF
DIRECTORS**

Jill Hill,
President,
562-599-1822

Maria Norvell
*V-President/
CTL Chair,*
562-427-5021

Joan Greenwood
Secretary,
562-599-0812

Nancy Risch,
*Treasurer/
Hospitality*
562-426-5266

Timothy Risch,
*Sergeant at Arms
Photos/Printer*
562-426-5266

Joan Pizzato,
*Parliamentarian/
Editor*
562-427-2372

Jim Trout,
*Press & PR/
Historian*
562-426-5241

*WANA Members are
invited to contact
Board Members
with questions or
concerns.*