

Brooklyn NEIGHBORHOOD NEWS

September/October 2007

ICE CREAM SOCIAL IN THE PARK



SUNDAY
SEPTEMBER 9, 2007

From 1 - 4 pm in
Brooklyn Park

The Brooklyn Action Corps invites you to
enjoy the 6th Annual
"Ice Cream Social in the Park."

Ice Cream Bars for 25 cents!

ACTIVITIES PLANNED

Obstacle Course Bouncer
Balloon Man, Petting Zoo
Water Balloon Toss, Banner Making

ENTERTAINMENT

"Dancing Out Loud"

A 7-Piece Rockin' Marimba Band

PRIZES, PRIZES, PRIZES
for kids and adults

Loaves & Fishes will be back with Hot & Polish
Dogs, potato salad, soft drinks and bottled water.

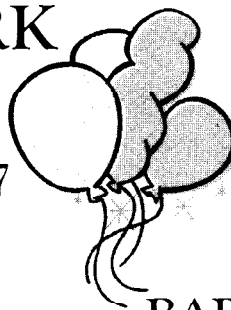
Booths will feature the Brooklyn Historical Society,
local artists, plant sale and more!

Plan to attend and enjoy an afternoon
with your family and neighbors.

We need help with setup and take down.
Any volunteers?

Call the HelpLine 503/241-4540.

Check out the Brooklyn website
www.brooklyn-neighborhood.org



The Berlin Inn's BARKIN' OKTOBERFEST

for People & Pooches

Sunday, September 9, 2007 Noon-7 pm

Authentic German
FUN, FOOD, BEER & WINE

Fund raising for Local Dog Rescue
All ages welcome - Bring the Kids!
Bring the Dogs!

WHERE: The Berlin Inn
12th & Powell

CONTACT INFO: Karen or Dawn
503-236-6761 or email: www.berlininn.com



Brooklyn Neighborhood General Meeting

Wednesday, September 26, 2007

Sacred Heart Villa Hall
Corner of Milwaukie Ave. and Center St.
7 pm

UPDATE on the SELLWOOD BRIDGE OPTIONS

Meet your neighbors and bring your ideas, concerns and
vision for the Brooklyn neighborhood.
Free coffee and pastries from True Brew

Calendar of Events

ICE CREAM SOCIAL

Sunday, September 9, 2007

Brooklyn Park

1 - 4 pm

BAC Board Meeting

Wednesday, September 12, 2007

6:30 - 9 pm

Sacred Heart Villa Hall

Milwaukie & Center

Neighborhood General Meeting

Wednesday, September 26, 2007

7 pm

Sacred Heart Villa Hall

Milwaukie & Center

BAC Board Meeting

Wednesday, October 10, 2007

6:30 - 9 pm

Sacred Heart Villa Hall

Milwaukie & Center

Portland Ragtime Society

Presents

THE BRADSHAWS

Ragtime Piano Duo

Wednesday, September 12, 2007 at 1 pm

Sacred Heart Villa Hall

3925 SE Milwaukie Ave.

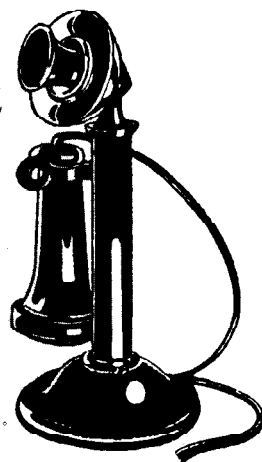
Chris and Jack Bradshaw from Gilroy, California will share a fun hour of four-hand arrangements of classical and contemporary rags. No admission charge.

For more information, call 503/963-8238

BROOKLYN HELP LINE

503/241-4540

The Helpline is for the Brooklyn neighborhood to voice their concerns or to get information to the Brooklyn Action Corps.



Developing Developments, Part 1

by Lance Lindahl

It seems that one cannot travel more than a couple of blocks in Portland these days without encountering some sort of large-scale construction project. This goes for the Brooklyn Neighborhood as well. As your neighborhood chair, I have had the pleasure to assist on two different projects that will shape the Brooklyn Neighborhood in the years to come.

Eastside Big Pipe

Construction on the Combined Sewer Overflow (Big Pipe Project) is now underway at the corner of SE 17th and McLoughlin. Site preparation is nearly complete, and construction crews will soon begin work on digging the tunnel shaft. The tunnel boring machine will work deep underneath McLoughlin and end its journey here in 2011.

The good news is that most Brooklyn residents will not be directly impacted by this project. Most of the work will take place deep underground, and dirt and other debris will be removed via underground conveyers.

Unfortunately, there are some negative impacts that we will have to endure over the next four years. Motorists can no longer exit McLoughlin at SE 18th Avenue due to a street closure. Another shaft will be dug just north of the Ross Island Bridge. This will further limit access to the popular Springwater Trail.

The City of Portland has established a community benefits opportunity program to help offset these negative impacts. **Nearly two million dollars will be awarded towards community infrastructure projects.** As the Brooklyn neighborhood representative to this program, I have advocated for several different grants that would benefit area residents. There are several proposed projects that would enhance walking and bicycling within the neighborhood. The committee is in the final stages of selecting the final projects for funding. Please see future issues of this newsletter for further details as to which local area projects will be moving forward.

More information about the Eastside Big Pipe Project can be found at: <http://www.portlandonline.com/cso/>

In the next issue, look for updates on MAX.



Check out the **Brooklyn Neighborhood Website** for the latest information:

www.brooklyn-neighborhood.org

Brooklyn Neighborhood News

is published bi-monthly by the BAC. To contact the Brooklyn News, call the helpline or email the newsletter at brooknews@brooklyn-neighborhood.org

Community announcements, local events and press releases are accepted on a space available basis. Closing date for the newsletter is on the 15th of even-numbered months. This newsletter is edited and designed by Marie Phillippi.

Brooklyn Architecture: 1960's to the present

by Kathy Orton

The "flats" (east of Milwaukie Ave.) has suffered even more infill than the heights. Were there more run down rentals, poorly maintained older homes, or just the attraction of multifamily rental incomes, which caused this trend? There were some huge lots that were subdivided, but there are more questions than answers at this point.

At 3360-62 SE 15th, right behind Brooklyn's oldest home, sits a duplex that looks a lot like a double wide mobile home. These 60's infill ranches, with no frills, are found scattered around Brooklyn and they remain unchanged.

On the issue of row-houses in the flats, one of the best examples can be found at 3312-24 SE 12th. Architect designed, these homes were detailed to fit among surrounding styles. There are front bays; wagon wheel peak trim; open, drop down porch trim and garages that are hidden behind protruding stairways.



In the 1990's, one of the largest new developments was erected at the site of the community gardens on 16th. Called City Life,

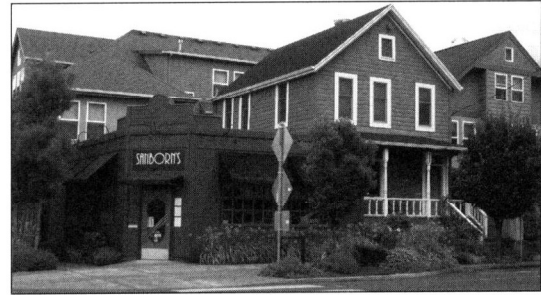


it was built by Reach development with a variety of housing sizes and costs. Many architects competed for this project. Some of the drawings were 'revivals' of bungalow/crafts styles; some very

contemporary. The original selection of flat roofed and plywood trimmed structures drew lots of neighborhood complaints to modify the design. The resulting structures have combination shed and flat roofs, porch or entry ways and contrasting materials. Take a look. What would you have proposed?

Finally, built just last year is a new single family home at 1501 SE Rhone. Originally, it was the Donkers Store (1900), left to deteriorate as a rental, then torn down. In its place is a two-story home with porch posts, a modest entry, peaked roof and overhang above the garage and a touch of shingles at the peak.

Some of the best reuse and addition to buildings has occurred along Milwaukie Avenue. Brooklyn Garden's (home of Sanborn's Restaurant) took an existing 1890's farmhouse, kept the Italian garden (note the fig tree), and the corner bar, then connected them with board & batten siding.



Detailed catering facilities with apartments at the rear also were added. Note the height

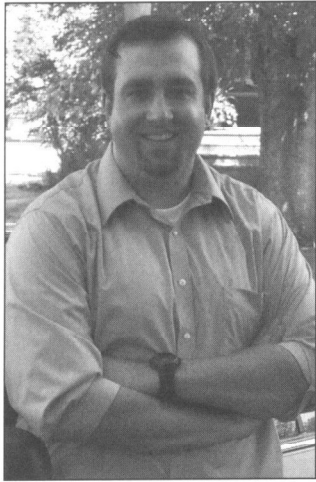
placed to the rear of the complex, and the water feature tying together the buildings and garden.

Across the street at 3227 SE Milwaukie, the Forte Marketing has connected two simple bungalows into a 'revival' stucco mission style. Note the window treatment, retaining wall, porch with rails and appropriate plants.

Our most recent addition is the Sacred Heart Villa at 3911 SE Milwaukie. Though the scale at streetside is imposing, the hip roofs, knee braces, board & batten, double hung windows and commercial storefront entry are all Arts & Crafts/Bungalow bits. It's big, but it's Brooklyn.

Brooklyn will never be a completely finished neighborhood; change will continue, especially along Milwaukie Avenue, where many commercial buildings are underused. Since architectural style at this point has no single focus but uses both older style details and new use of materials, Brooklyn residents can definitely influence new building design. We have fine examples of infill, remodeled and restored buildings, where builders, designers and residents have come together to discuss the "feel" and 'impact' of new construction. We also seek to preserve our 85% pre-1945 structures for both aesthetic and environmental reasons.

There is a lot of variety in Brooklyn. You can groan at a flat topped plywood sided apartment and marvel at a string of bungalows, but we value our architectural identity and the community it creates for Brooklyn residents.



Meet Brooklyn's New Neighborhood Police Officer

Officer Stephen Mirau has just been assigned to several SE neighborhoods, including Brooklyn. He was born and raised in Gresham and has been on the police force for 6 ½ years. In this assignment, he will be looking for long term solutions to livability issues such as drug houses, loud parties, juvenile problems, etc.

Officer Mirau's hours are 7 am to 5 pm Monday-Thursday.
Call him at 503/823-1274 or email at smirau@portlandpolice.org

Focus on Brooklyn Business

Madeline Meza Janovec

Madeline started drawing at 5 yrs. old and art has been in her life ever since. Her first formal drawing class was in 1952 and although there were some detours, her art has always been there.



Originally from Southern California, Madeline passed through the Northwest area when she was 13 and decided then she had to come back.

One cannot miss her studio located on the corner of Holgate and Milwaukie Ave. She is very active in several art

organizations and had a solo exhibition of her own art and jewelry in South Korea Museum just last year. She just retired from teaching art in colleges since 1972.

Madeline specializes in painting, jewelry and monotype prints. She also offers 1/3 of her space to different guest artists every month. During this September, the featured painter is Emily Lux, who happens to be related to the family who own Columbia Meat Supply on Milwaukie Ave.

Janovec Gallery is open Fridays and Saturdays from 12 to 5 pm and by appointment on other days. Brooklyn residents are welcome! There is always something going on! For more information, call 503/231-8346 or www.mmjanovec.com.

Trina Hesson

Trina's art is her "passion" and in the last 13-14 years, she's been able to focus on her own creative media: colorful, quirky furniture and "found objects sculpture."

Her family first settled in Sweet Home, then Hillsboro and finally Portland. She tells of her first "studio" which was a garage in Lake Oswego, using all hand tools.

Use of power tools was not an option yet. She and her partner Steve Eschen, moved to Milwaukie Ave. in 1994 and have a wood working shop and studio



all in one. Together they create an extensive collection of furniture called "functional art." Trina also specializes in acrylic paint on wood.

On the side, Trina and Steve have a commercial painting business called "Color on Tap" that provides services to residences and businesses as well as offering color consulting. They are licensed, bonded and insured. For more information, call 503/245-1266.

Trina's studio is open to the public Fridays through Mondays from 11 am - 6 pm. Drop in and treat yourself to a new experience in art.

Both artists take part in **FIRST FRIDAY ART QUEST** which includes open studios of artists from Brooklyn, Westmoreland and the Sellwood area. Hours are 12 noon to 9 pm.

This document was created with Win2PDF available at <http://www.win2pdf.com>.
The unregistered version of Win2PDF is for evaluation or non-commercial use only.
This page will not be added after purchasing Win2PDF.