

INGERSOLL PARK

Neighborhood Association

A Quarterly Newsletter for IPNA Neighbors

DECEMBER 2006

Our IPNA Board Members ~

PRESIDENT:

Graham Gillette
274-3538
grahamgillette@aol.com

VP/PRESIDENT-ELECT

David DeForest-Colvig
255-9058
dcolvig@avalon.net

TREASURER:

Kevin Edwards
279-3179
kevin.edwards@mchsi.com

SECRETARY:

Britgne Lucas
279-4415
britgne@mchsi.com

MEMBERSHIP:

Mary Brubaker
279-2190
marybrubaker@aol.com

PAST PRESIDENT:

Clark Smith
255-2648
clark@butlerhouseongrand.com

BOARD MEMBERS AT-LARGE:

Paul Goodwin
279-0502
pgoodwin@mchsi.com

Bonnie Green
274-2626
btaylorgreen@mchsi.com

NEWSLETTER:

Theresa Weeks
255-7510
tcweeks@qwest.net

You are cordially invited to the Ingersoll Park
Neighborhood Association's Annual

Christmas Walk

Sunday, December 10th 5 - 7 pm



IPNA's tradition of sharing holiday cheer and celebrating the season is fondly known as the annual Christmas Walk. Please join us for food and drink in an Open House format at the following locations:

The Home of Wade & Mary Krieg
691 Harwood Drive / 255-4036

The Home of David & Jill DeForest Colvig
646 Harwood Drive / 255-9058

The Home of Robert & Rosemary Peterson
668 42nd Street / 274-0464

Our tradition is organized so that neighbors in close proximity to each Open House help to provide that host and hostess with treats and/or drinks. If you live near one of the hosts listed above, please call them to volunteer your favorite holiday specialty or beverage for this special evening. Others are welcome to contribute as well. We hope you can join us for this holiday event! Happy Holidays to one and all.....

Roosevelt Cultural District News

The Roosevelt Cultural District Vision Committee is a group of business owners, community and neighborhood association members, school officials and others who are working together and with the City to create a comprehensive overall plan for the Roosevelt area. Through their efforts they seek to create a 'sense of place' that reflects the vibrant and historic flavor of the business district and surrounding residential area.

Some of the issues and ideas that the group is working on include: lighting and other esthetic concerns, trash control, signage, traffic/safety concerns, landscaping, bicycle racks, proposed bike trail, Hubbell and Roosevelt site plans and the future exterior remodeling of the Playhouse. In addition, the group is working on completing a website that will post a calendar of events and activities for the area.

Mary Brubaker (279-2190) and Kevin Edwards (279-3179) are our IPNA representatives to this group. If you have ideas or concerns you would like the RCD Vision Committee to consider, please contact Mary or Kevin.

The RCD Vision Committee meets the 4th Tuesday of every month. Stay tuned to the IPNA newsletter for updates.

Christmas Walk Reminder: ❄️

If you can help out with goodies for the Christmas Walk, please contact one of the hosts to let them know what you can bring. One thing that makes the walk so much fun is the wonderful variety of foods that are offered. IPNA could no doubt put together a wonderful holiday cookbook!!

IPNA Membership Note

IPNA has now begun mailing the quarterly newsletter instead of hand-delivering it to each door. If you would you like to continue receiving the IPNA newsletter through the mail you will need to become an official IPNA member by sending your \$10.00 membership fee to:

Kevin Edwards / IPNA Treasurer
530 44th Street
Des Moines, Iowa 50312

This flat fee covers both individuals and families and supports not only the newsletter but other activities as well. Checks may be made out to IPNA with 'membership' written on the note line. Thank you. We truly appreciate your support!

Tree Project Update



By Katie Gillette

I hope everyone enjoyed the wonderful show that our new Chanticleer pear trees put on this fall. It was just a hint of what is to come! In the years ahead we will have spectacular displays in the spring when they flower and again in the fall with the beautiful red and orange leaves.

I will have clipboards at all three houses on the Holiday Walk to sign up for trees to be planted in the spring for anyone who missed the initial planting. I will be turning the list in to the city before the end of the year. If you cannot attend the Holiday Walk, but still want to be on the list for trees, please contact me as soon as possible at :

274-3538 or kigillette@aol.com



Around the Neighborhood -

A glimpse at neighborhood people, happenings and activities. This edition.....featuring the Labor Day Picnic & DM Marathon



Bonnie & Don Green enjoying the Labor Day Picnic



Curt Simmons & his garden sculpture brainchild - a fun activity for kids and adults alike at the annual Labor Day picnic!



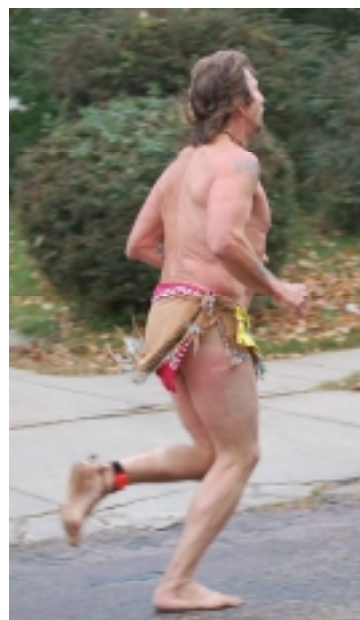
Part of the Mullen Family making Root Beer -- their traditional contribution to picnic fare



Mary & Wade Krieg with their delicious egg rolls! Don't miss their house on the Christmas walk!!



IPNA neighborhood kids hand out water to Des Moines Marathon runners in October.



This picture comes from the 'oddities' file of the Des Moines Marathon: A near-naked, barefoot runner made the loop through our IPNA neighborhood during the October run!

NEIGHBORHOOD NOTES



• Halloween night was the perfect combination of Indian summer warmth and the initial crispness of fall. Our neighborhood looked like something out of a storybook with all the of decorated houses and jackolanters greeting our little goulsh guests. IPNA

was certainly in the spirit of this annual event and we thank everyone for opening their doors and handing out candy. While this is a totally unofficial survey, here are some noted superlatives from that night:

Best Jack-o-Lantern Display: *Chris & Britgne Lucas*

Largest Jack-o-Lanterns: *Paul Weeks*

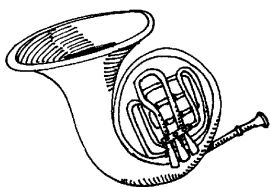
Most Active Doorstep : *Cherish Anderson & Jim Parker*

'Scariest' House : *Richard Davis & Theatrical Crew!*

Most Creatively Decorated House : *Curt Simmons & Kat Morris*

• The IPNA board would like to wish Kate Hedderich all the best as she continues to recuperate from her broken ankle.

• Roosevelt High School's music department will be putting on winter concerts this month. All concerts will be held in the Roosevelt auditorium. Neighbors and community members are always welcome to attend. The concerts to be performed are:



* Vocal Music - December 7th at 7:00 p.m.

* Orchestra - December 12th at 7:30 p.m.

* Band - December 14th at 7:30 p.m.

18-Hole Disc Golf Course Proposed for Greenwood Park

IPNA would like members to be aware that an 18-hole disc (frisbee) golf course is being proposed by the Des Moines Disc Golf Club (a private organization) for Greenwood Park.

The Salisbury Oaks and Linden Heights neighborhood associations have come out opposing the course. They believe Greenwood Park is a rare treasure—a natural setting with a wide variety of trees, plants, animals and birds, all uniquely contained within the city. They also believe the disc golf course, with 18 holes, would cover a large area of the park and would result in damage to the area and disruption of current use of the park.

They instead support the Greenwood Project which is backed by the Iowa Natural Heritage Foundation and the Polk County Conservation Board. This plan would immerse children, families and seniors in the arts and the environment. For more information on this go to:

www.conservationboard.org/PDFs/GreenwoodProject.pdf

Other reasons cited against the proposal include:

- The course is not needed. There are 16 hole disc golf courses withing 40 miles of downtown Des Moines, including ones in Waterworks Park (easily accessed by the trail from Greenwood Park), Grandview Park and Ewing Park.

- The course would harm the 'natural park' status of the area. Ground cover, vegetation and soil and animal habitat would be negatively impacted.

- Family walks and bike rides in the area could be dangerous due to frisbees flying at high speeds.

- Litter and debris have been a problem at many disc golf courses and public bathroom facilities may not be sufficient.

- The course may be incompatible with future uses for the old Science Center and could interrupt events taking place at the renovated outdoor Sylvan Theatre.

- There will be no way to enforce 'hours of operation' for the course as well as other policies such as no alcohol.

- While the Des Moines Disc Club would donate money toward the installation of the course, who will pay to maintain it?

- The layout of the course near private property will contribute to trespassing on private property to retrieve and throw discs.

- Should a private entity be 'given' public park land?

If you would like to read the Des Moines Disc Golf Club minutes where this proposal is discussed go to: www.dsmdiscgolf.com then to minutes then to September 2006 minutes.

We encourage you to voice your opinion to elected officials and to Des Moines Parks & Rec. Future meetings on this issue will be held so watch the Des Moines Register for announcements.

ESPRESSO 42 at Plymouth Church

If you haven't already discovered Espresso 42, we encourage you to visit this relatively new coffee shop in our neighborhood. It's located on the westside of Plymouth Church which is easily accessed by the semi-circle drive. It's a lovely atmosphere and within walking distance of our front doors! A lovely place to meet a friend and a convenient place for a morning meeting. Here are the hours of operation:

Tuesday - Friday: 7:00 a.m. to 2:30 p.m. — serving breakfast & lunch

Saturday : 8:00 a.m. to 12:00 noon — serving breakfast

Sunday : 8:00 a.m. to 12:00 — serving beverages

Tuesday, Wednesday and Thursday Evenings : 4:00 to 8:00 — serving cold sandwiches

Ingersoll Update



In the last newsletter we told you about a new group called Restoration Ingersoll which is currently working on coordinating a streetscape improvement plan. This group has been actively raising money for a pilot project for improvements on Ingersoll Avenue between 28th and 31st streets -- a joint effort

of the City of Des Moines and the Ingersoll Area Association. If the pilot project is successful, improvements will be implemented along the remainder of the Ingersoll corridor. Restoration Ingersoll has met some of its initial fundraising goals but is still actively seeking donations. Here are two easy ways that you can support Restoration Ingersoll:

BUY A BRICK

Restoration Ingersoll is conducting a "buy a brick" campaign to raise money for the street revitalization effort. For \$100, supporters can have a name or short message engraved on a brick that will be incorporated into the sidewalk plan.

If you would like to purchase a brick, please send check, contact information and brick inscription text to:

Restoration Ingersoll
c/o The Greater Des Moines Community Foundation
1915 Grand Avenue
Des Moines, Iowa 50309

All donations to this project this project will be tax deductible. Restoration Ingersoll would like to emphasize to residents that improvements made will enhance residential housing values and will increase retail, entertainment and dining opportunities. All of these things will in turn strengthen the economic base of the Ingersoll area.

INGERSOLL T-SHIRTS - available from Tandem Brick at 28th & Ingersoll. Several colors and sizes both short \$(20.00) and long sleeve (\$25.00) are available.

The Ingersoll Association has a website full of information about Restoration Ingersoll and all of the businesses in the Ingersoll area. To learn more about this unique area of commerce in our neighborhood go to:



www.ingersollave.com



IPNA

c/o 635 Harwood
Des Moines, Iowa 50312

Planning Ahead IPNA Calendar

- December 10th Annual IPNA Christmas Walk - 5:00 to 7:00 p.m. *(see related story)*
- MARCH 2007 Quarterly Meeting *To Be Announced.....*



The IPNA Board Wishes Everyone A Very Happy Holiday Season!

.....