

PEMBROOKE HOA

PAINT LIST

Approved by the Board February 26, 2014

EXTERIOR PAINT COLORS FOR STUCCO, TRIM & FRONT DOORS

NOTE: The garage door may be painted the same color as the body of the house or the trim

Full description and larger color image available on homedepot.com or by googling the paint code for example ECC-51-1.

PEMBROOKE HOA

PAINT LIST

EXTERIOR PAINT COLORS FOR STUCCO, TRIM & FRONT DOORS

(The garage door may be painted the same color as the body of the house or the trim)

BEHR EXTERIOR COLLECTION

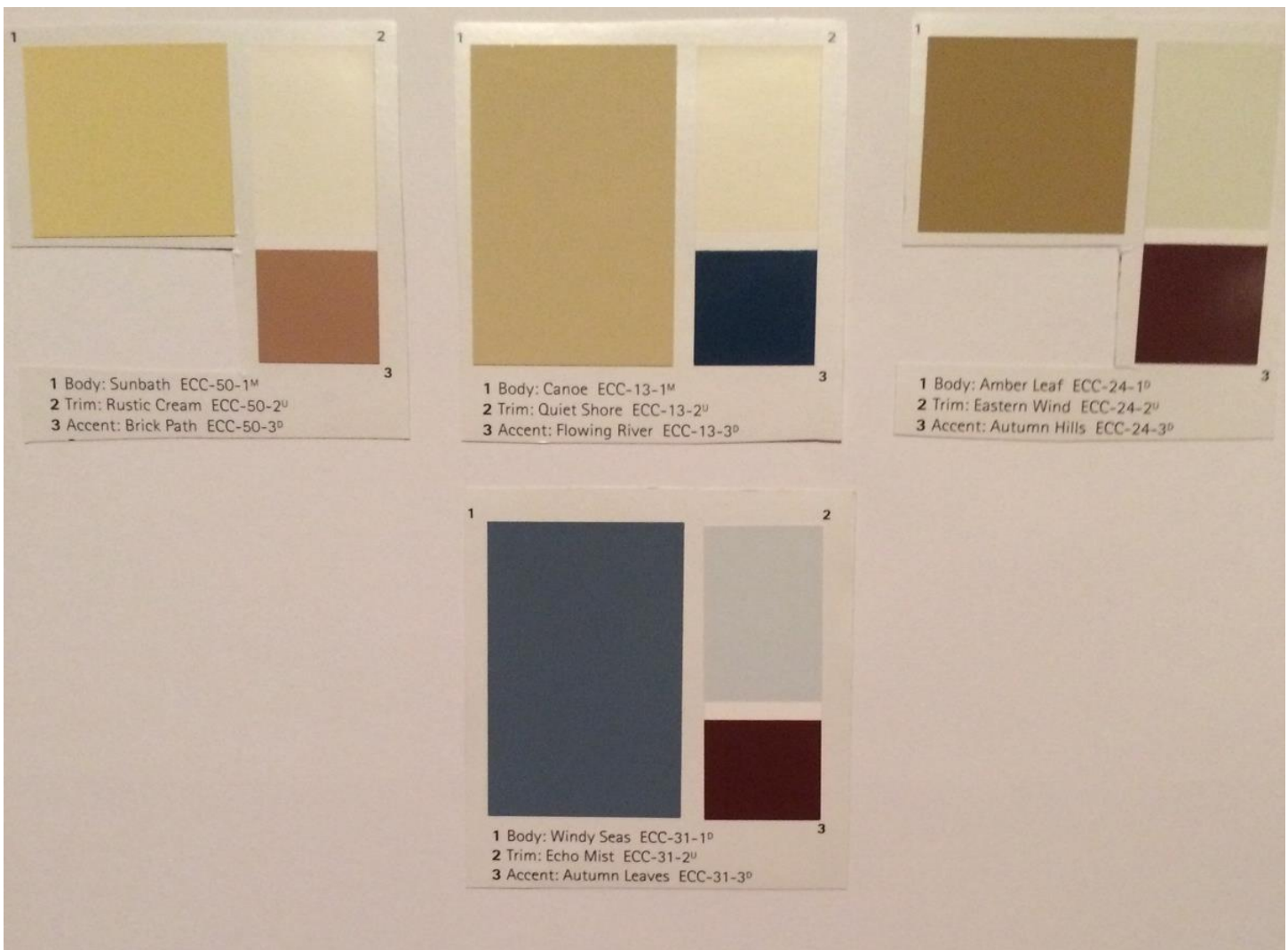
BODY		TRIM		ACCENT (FRONT DOOR)	
Hiking Trail	ECC-51-1	Sand Castle	ECC-51-2	Hidden Forest	ECC-51-3
Sonoran Sands	ECC-43-1	Bridle Path	ECC-43-2	Chaparral	ECC-43-3
Autumn Sage	ECC-63-1	Aspen Snow	ECC-63-2	Homeland	ECC-63-3
Jungle Khaki	ECC-64-1	Moonstruck	ECC-64-2	Desert Night	ECC-64-3
Desert Plain	ECC-21-1	Palisade	ECC-21-2	Imperial Palm	ECC-21-3
Barley Field	ECC-44-1	Moon Valley	ECC-44-2	Osprey	ECC-44-3
Nevada Sand	ECC-52-1	Aristocrat Ivory	ECC-52-2	Hillside View	ECC-52-3
New Khaki	ECC-54-1	Country Lake	ECC-54-2	Wild Stallion	ECC-54-3
Canewood	ECC-40-1	Southwestern Sand	ECC-40-2	Seasoned Acorn	ECC-40-3
Fox Hill	ECC-42-1	Cotton Ridge	ECC-42-2	Deep Cherrywood	ECC-42-3
Arbor Hollow	ECC-37-1	Grand Heron	ECC-37-2	Freshwater Marsh	ECC-37-3
Pale Sagebrush	ECC-38-1	Icy Tundra	ECC-38-2	Sea Fern	ECC-38-3
Sunbath	ECC-50-1	Rustic Cream	ECC-50-2	Brick Path	ECC-50-3
Canoe	ECC-13-1	Quiet Shore	ECC-13-2	Flowing River	ECC-13-3
Amber Leaf	ECC-24-1	Eastern Wind	ECC-24-2	Autumn Hills	ECC-24-3
Canyon View	ECC-20-1	Ranch Acres	ECC-20-2	Hickory Grove	ECC-20-3
Silver Clouds	ECC-35-1	Quartz Stone	ECC-35-2	Thunder Bay	ECC-35-3
Pacific Mist	ECC-34-1	Boulder Creek	ECC-34-2	Terra Cotta Sun	ECC-34-3
Pelican Bay	ECC-30-1	ULTRA PURE WHITE		Night Tide	ECC-30-3
Scenic Path	ECC-14-1	Great Frontier	ECC-14-2	Otter Creek	ECC-14-3
Quail Ridge	ECC-18-1	Pebbled Shore	ECC-18-2	Otter Creek	ECC-14-3
Sierra Madre	ECC-46-1	Eagle Ridge	ECC-46-2	Red Hawk	ECC-46-3
Rocky Ridge	ECC-25-1	Echo Valley	ECC-25-2	Obsidian Stone	ECC-25-3
Lost Summit	ECC-15-1	Light Sandstone	ECC-15-2	Cherry Bark	ECC-15-3
California Stucco	ECC-57-1	Shady White	ECC-57-2	Always Indigo	ECC-57-3
Deer Run	ECC-45-1	Canyon Cliffs	ECC-45-2	Conifer	ECC-45-3
Farmyard	ECC-58-1	Earthly White	ECC-58-2	Unreal Teal	ECC-58-3
Shady Willow	ECC-36-1	Nesting Dove	ECC-36-2	Red Bluff	ECC-36-3
Mountain Shade	ECC-47-1	Elk Horn	ECC-47-2	Twilight Forest	ECC-47-3
Iron Wood	ECC-33-1	Silver Sands	ECC-33-2	Dark Sea	ECC-33-3
Windy Seas	ECC-31-1	Echo Mist	ECC-31-2	Autumn Leaves	ECC-31-3

Full description and larger color image available on homedepot.com or by googling the paint code, for example ECC-51-1.

OLYMPIC COLORS OF INSPIRATION

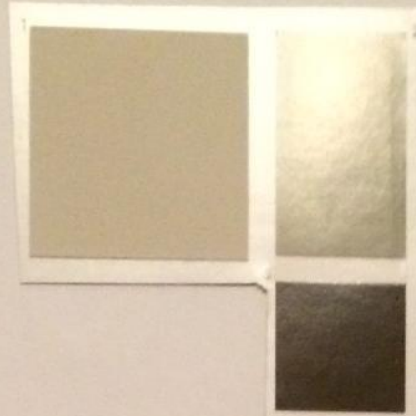
BODY		TRIM		ACCENT (FRONT DOOR)	
Gray Marble	D31-3	Irish Cream	C20-3	Black Elegance	D43-6
Drifting Dune	D21-2	Stonington	D14-3	Earl Gray	D18-4
Candlelit Beige	B10-3	Slate Pebble	D32-3	Barn Door	C35-5
Gray Frost	D57-3	Moondance	D44-1	Blue Zephyr	D47-5
Adolescence	D46-4	Irish Cream	C20-3	Barn Door	C35-5
Adobe White	C14-1	Hitching Post	C22-4	Pony Tail	C15-3
Toasted Almond	D13-2	Snowbank	C40-2	Coffee Bean	D16-6
Prairie Dust	D12-3	Queen Anne's Lace	A10-3	Apple Brown Betty	C26-5
Green Tea Leaf	D67-4	Dusty Trail	D13-3	Country Beige	D18-1
Sarsaparilla	D33-6	Peppered Pecan	D25-4	Warm Mahogany	C31-6
Sprig of Ivy	D68-3	Bone White	D20-3	Fire Weed	C34-5

Full description and larger color image available on homedepot.com or by googling the paint code for example ECC-50-1.





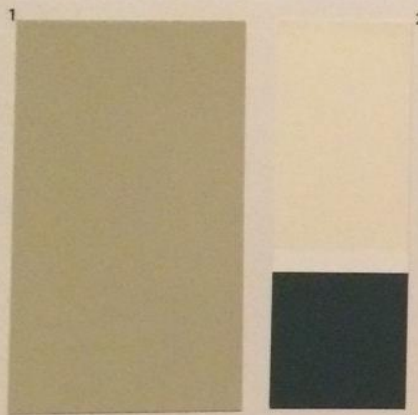
1 Body: Hiking Trail ECC-51-1⁰
 2 Trim: Sand Castle ECC-51-2^U
 3 Accent: Hidden Forest[†] ECC-51-3⁰



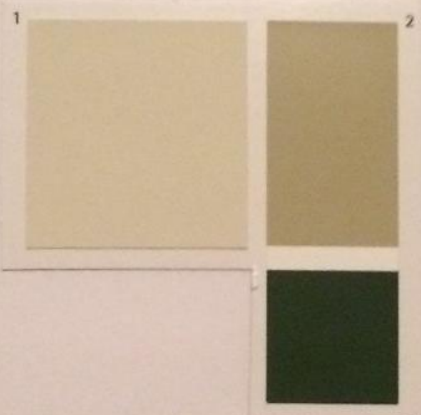
1 Body: Sonoran Sands ECC-43-1⁰
 2 Trim: Bridle Path ECC-43-2^M
 3 Accent: Chaparral ECC-43-3⁰



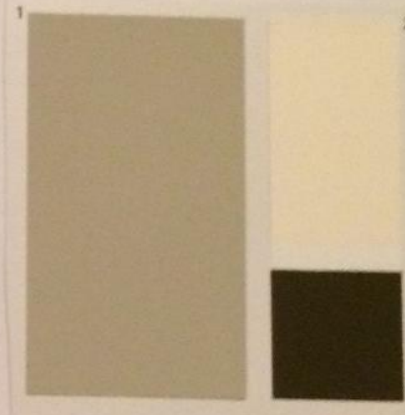
1 Body: Autumn Sage ECC-63-1⁰
 2 Trim: Aspen Snow ECC-63-2^U
 3 Accent: Homeland ECC-63-3⁰



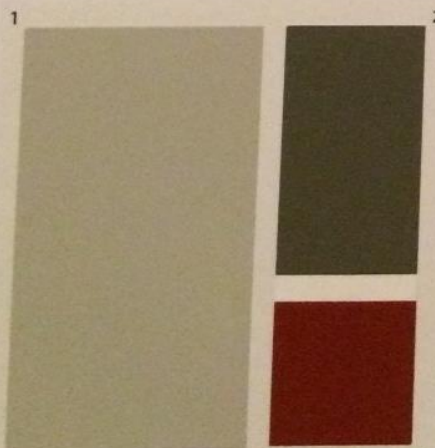
1 Body: Jungle Khaki ECC-64-1^M
 2 Trim: Moonstruck ECC-64-2^U
 3 Accent: Desert Night ECC-64-3⁰



1 Body: Desert Plain ECC-21-1^U
 2 Trim: Palisade ECC-21-2^M
 3 Accent: Imperial Palm ECC-21-3⁰



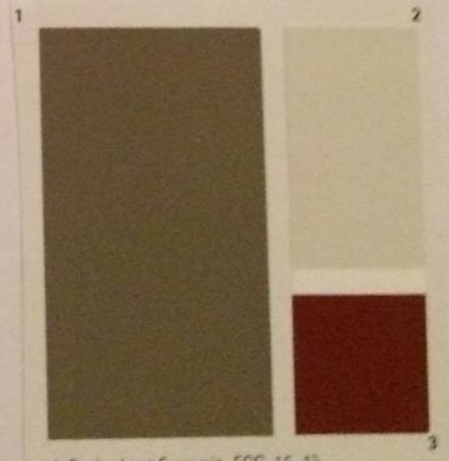
1 Body: Barley Field ECC-44-1^U
 2 Trim: Moon Valley ECC-44-2^U
 3 Accent: Osprey ECC-44-3⁰



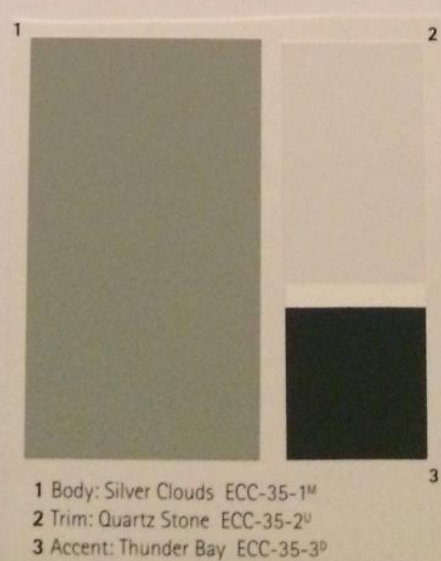
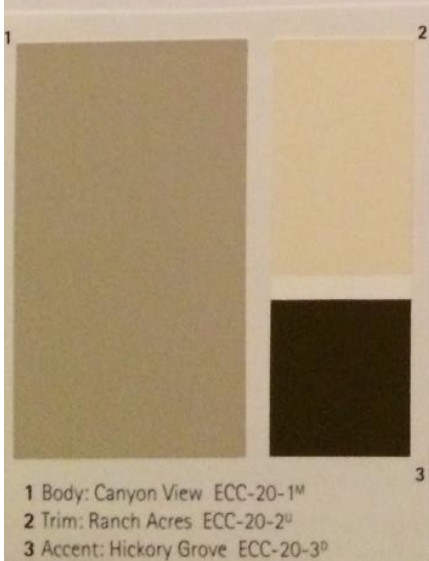
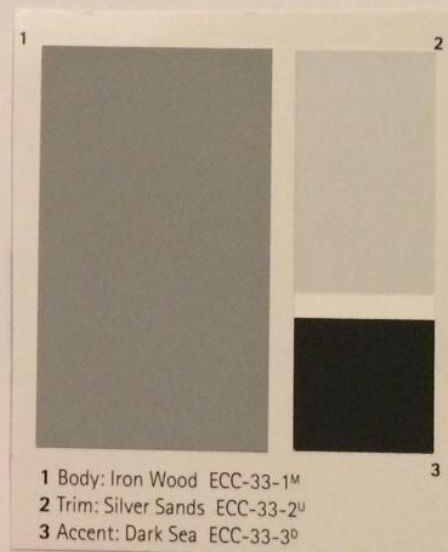
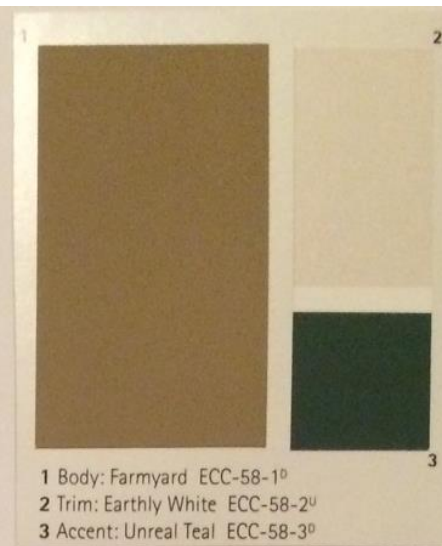
1 Body: Sierra Madre ECC-46-1^M
 2 Trim: Eagle Ridge ECC-46-2⁰
 3 Accent: Red Hawk[†] ECC-46-3⁰

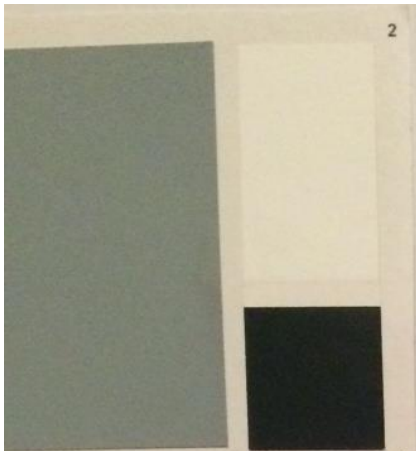


1 Body: Rocky Ridge ECC-25-1⁰
 2 Trim: Echo Valley ECC-25-2^U
 3 Accent: Obsidian Stone ECC-25-3⁰

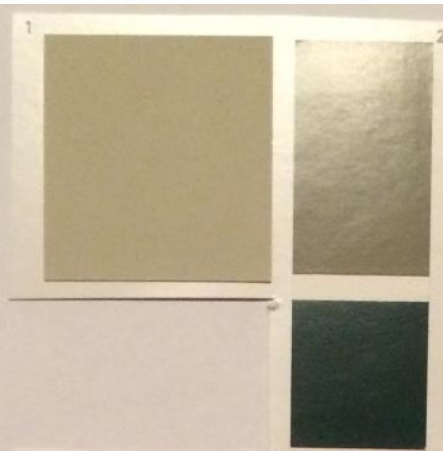


1 Body: Lost Summit ECC-15-1⁰
 2 Trim: Light Sandstone ECC-15-2^U
 3 Accent: Cherry Bark ECC-15-3⁰

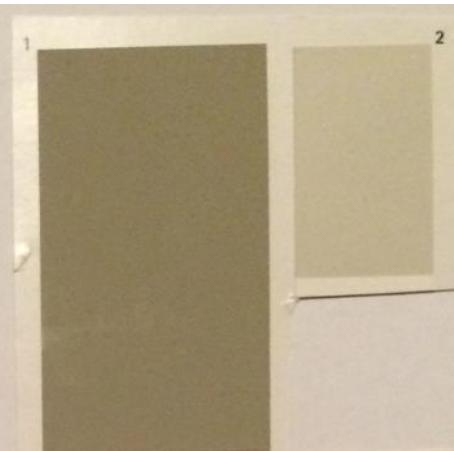




1 Body: Pelican Bay ECC-30-1^M
2 Trim: ULTRA PURE WHITE®
3 Accent: Night Tide ECC-30-3^D



1 Body: Scenic Path ECC-14-1^U
2 Trim: Great Frontier ECC-14-2^D
3 Accent: Otter Creek ECC-14-3^D



1 Body: Quail Ridge ECC-18-1^M
2 Trim: Pebbled Shore ECC-18-2^U
3 Accent: Otter Creek



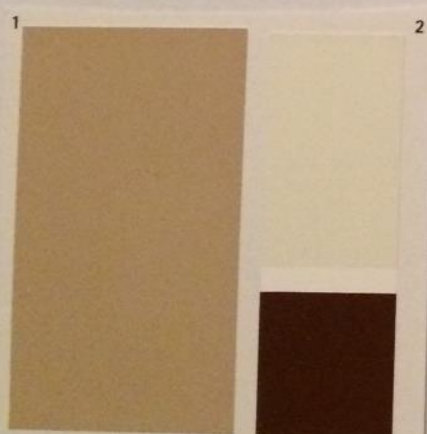
1 Body: Nevada Sand ECC-52-1^U
2 Trim: Aristocrat Ivory ECC-52-2^U
3 Accent: Hillside View ECC-52-3^D



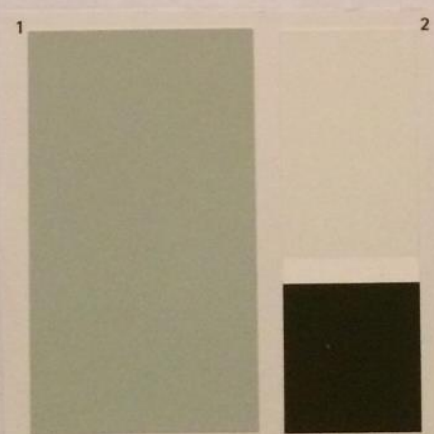
1 Body: New Khaki ECC-54-1^M
2 Trim: Country Lake ECC-54-2^D
3 Accent: Wild Stallion ECC-54-3^D



1 Body: Canewood ECC-40-1^M
2 Trim: Southwestern Sand ECC-40-2^U
3 Accent: Seasoned Acorn ECC-40-3^D



1 Body: Fox Hill ECC-42-1^M
2 Trim: Cotton Ridge ECC-42-2^U
3 Accent: Deep Cherrywood ECC-42-3^D



1 Body: Arbor Hollow ECC-37-1^U
2 Trim: Grand Heron ECC-37-2^U
3 Accent: Freshwater Marsh ECC-37-3^D



1 Body: Pale Sagebrush ECC-38-1^U
2 Trim: Icy Tundra ECC-38-2^U
3 Accent: Sea Fern ECC-38-3^D



Full description and larger color image available on [homedepot.com](https://www.homedepot.com) or by googling the paint code.



Full description and larger color image available on [homedepot.com](https://www.homedepot.com) or by googling the paint code.