

Private Sector Stakeholder Meeting



Pima County Regional Flood Control District
Ruthrauff Basin Management Plan



October 23, 2014

Welcome

- * Introductions
 - * District Team
 - * Stakeholders
- * Project Purpose
 - * Develop a Comprehensive Flood Control Program
 - * Develop Drainage Alternatives
 - * Provide a Balanced Multi-Objective Approach

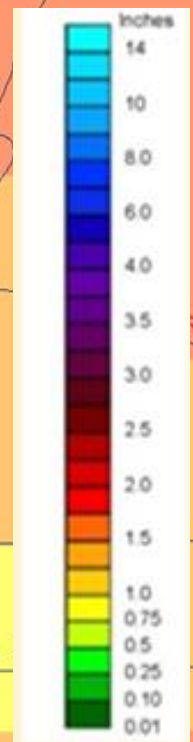
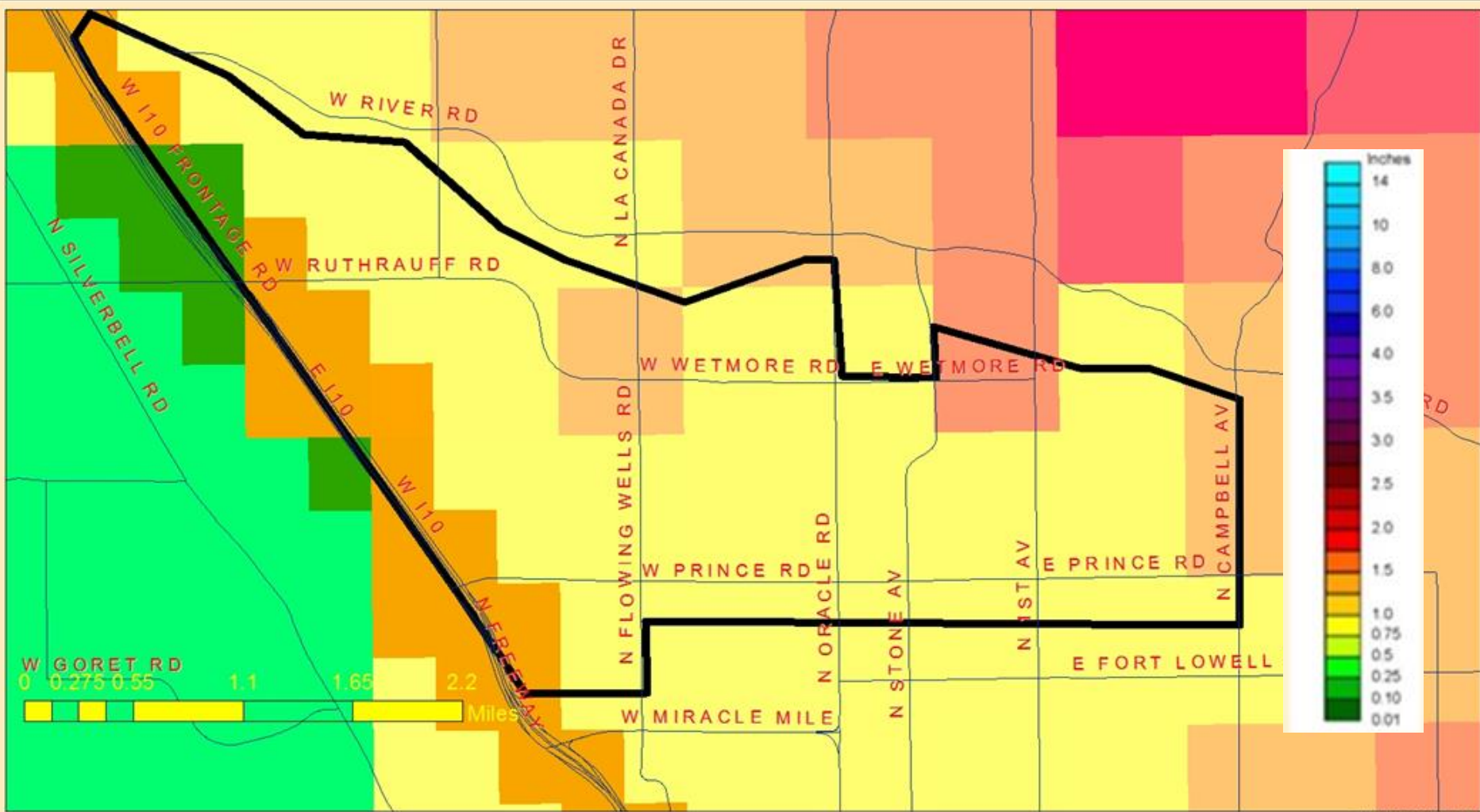










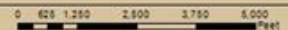


Pima County Regional Flood Control District
 97 E Congress - 3rd Floor
 Tucson, Arizona 85701-4207
 (520) 724-4800, FAX: (520) 724-4821
<http://www.rfd.pima.gov>

Rainfall on 09-08-14



1 inch = 2,500 feet



Date:

The information depicted on this display is the result of digital analyses performed on a variety of databases provided and maintained by several governmental agencies. The accuracy of the information presented is limited to the collective accuracy of these databases on the date of the analysis. The Pima County Regional Flood Control District makes no claims regarding the accuracy of the information depicted herein.

This product is subject to the GIS Division Disclaimer and Use Restrictions.

WETMORE RD









NO
OUTLET

Meeting Purpose

- * Inform Stakeholders of Project
- * Provide Project Overview
- * Receive Input from Attending Stakeholders
- * Identify Any Other Related Issues

Agenda Review

- * Open House
- * Introductions and Opening Comments
- * Meeting Purpose & Agenda Review
- * Stakeholder Involvement Approach
- * Project Overview
- * Stakeholder Input/Discussion
- * Summary and Next Steps
- * Adjourn

Stakeholder involvement approach

Public Meeting
May 2015

Public Meeting
April 2016

Inform

Existing
Conditions
Analysis

Involve

Preliminary
Floodplain
Delineation/
Alternatives

Include

Recommended
Alternative

Stakeholder Inform

July 2014-
December 2014

Stakeholder Involve

July 2014-
April 2016

Stakeholder Include

April 2016

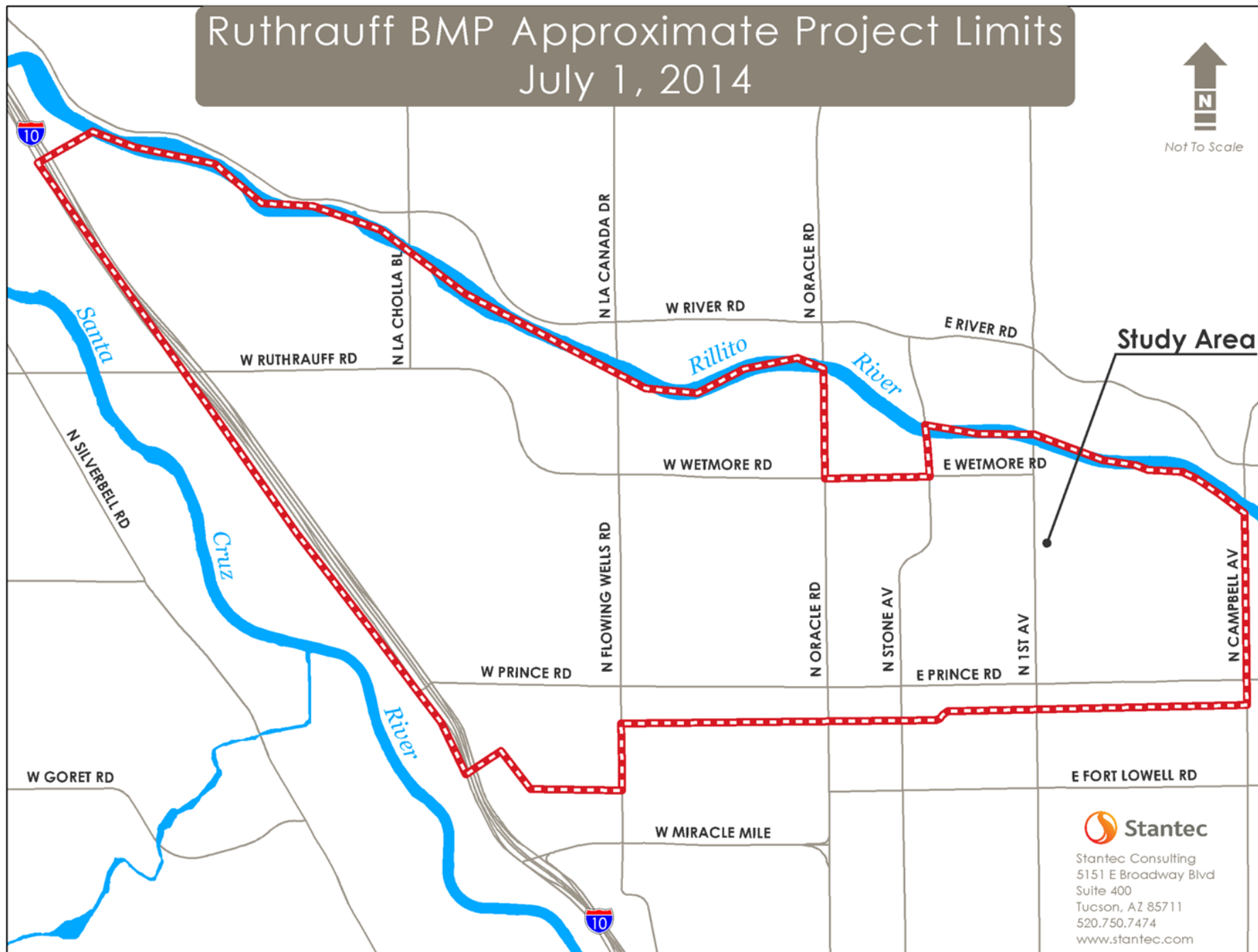
Project Overview

Project Limits

Ruthrauff BMP Approximate Project Limits July 1, 2014



Not To Scale



Stantec Consulting
5151 E Broadway Blvd
Suite 400
Tucson, AZ 85711
520.750.7474
www.stantec.com

Project Overview continued

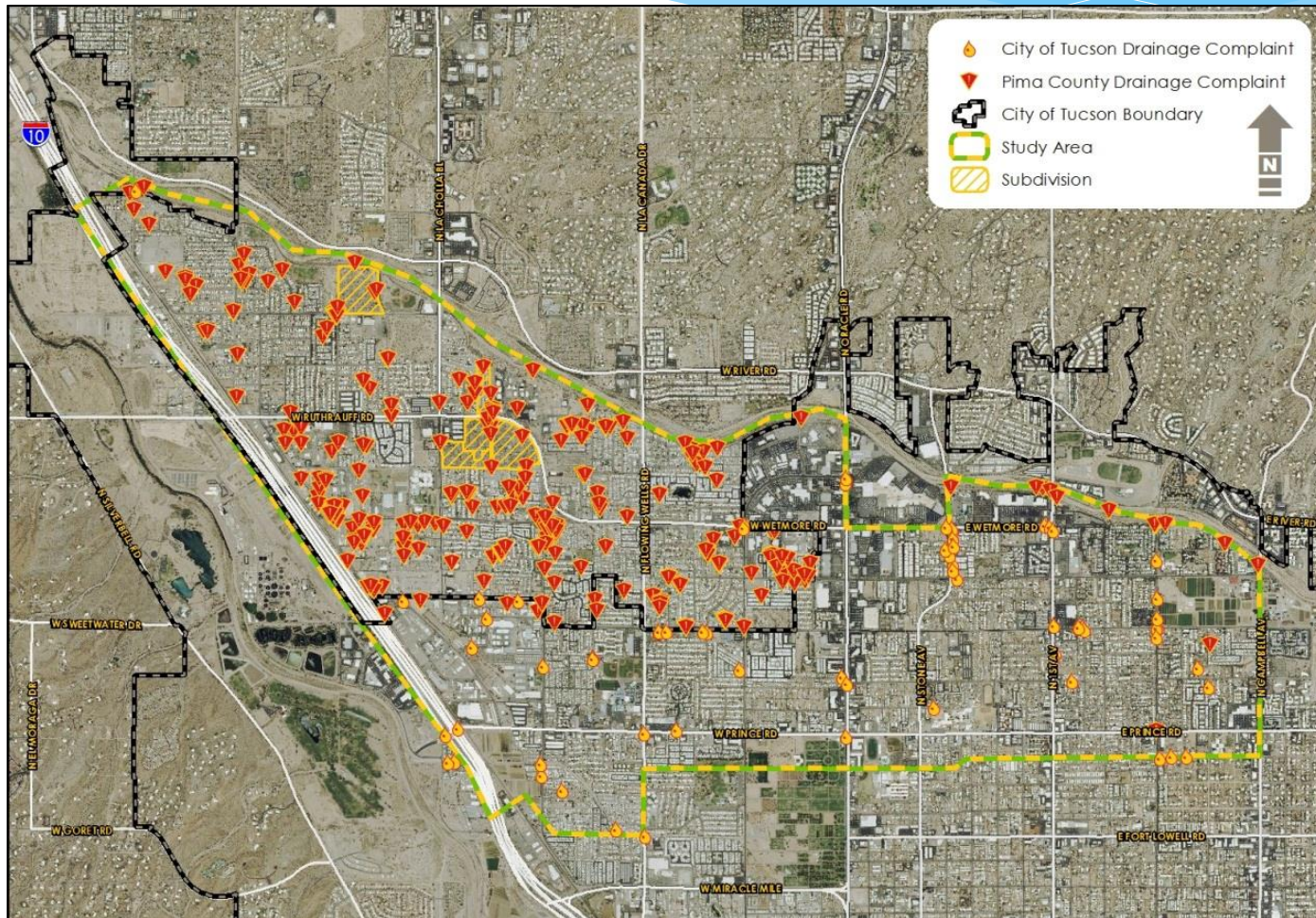
- * SCOPE OF WORK

- * Existing Conditions Analysis Done
- * Hydrologic Analysis & Floodplain Delineation In Process
- * Preparation of FEMA Map Revision In Process
- * Alternatives Analysis and Remediation Recommendations Forthcoming
- * Public and Stakeholder Involvement Ongoing

Project Overview continued

- * Existing Conditions
 - * Drainage Complaints

Drainage Complaints



Project Overview continued

- * Existing Conditions
 - * Review Available Studies & Reports

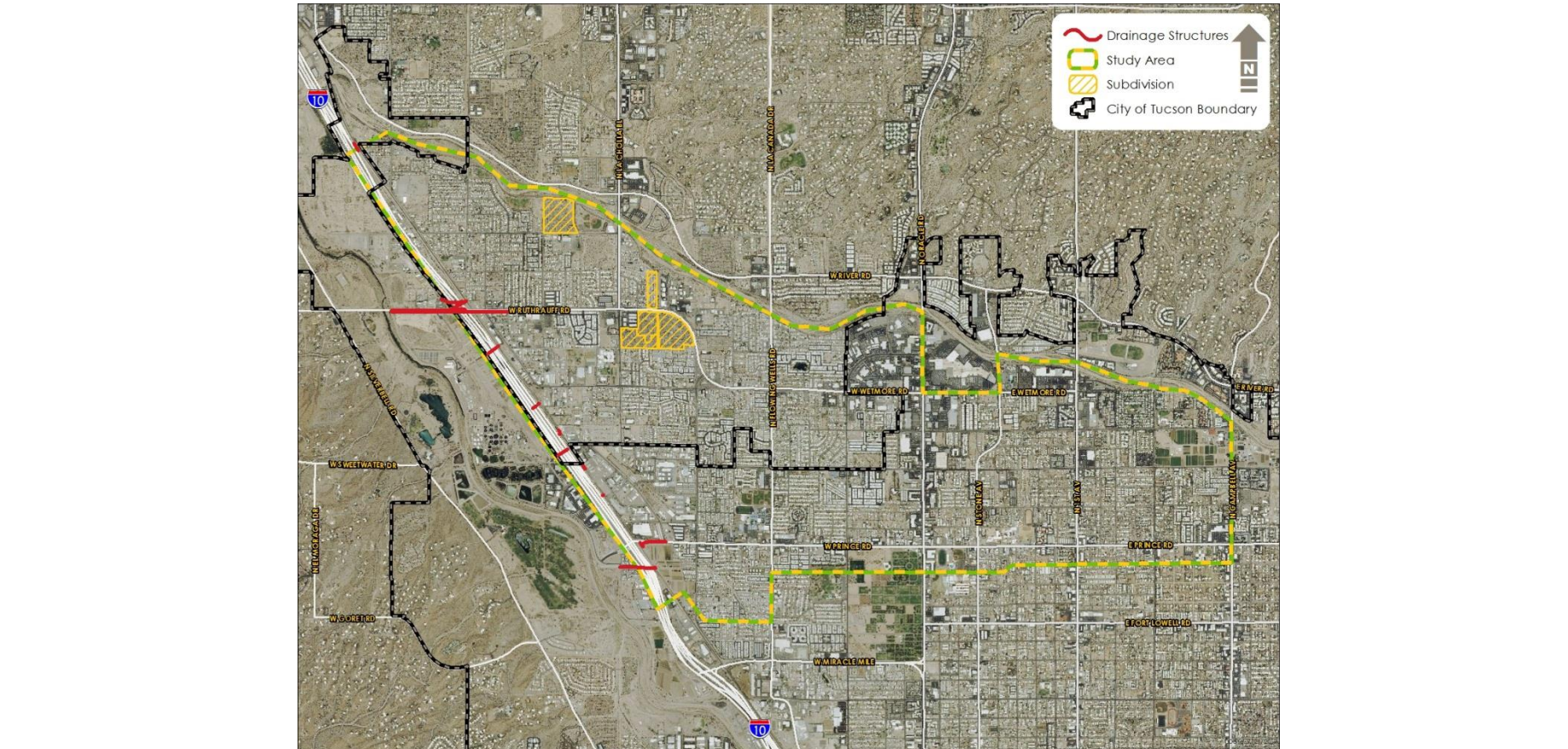
Available Studies and Reports

- * March 23, 1981, **Preliminary Drainage Study Report, Ruthrauff Road I-10 to La Cholla Blvd.**, Cella Barr Associates.
- * June 3, 1981, **Hydrologic Investigation for Gardner Lane Area**, Cella Barr Associates
- * July 16, 1981, **Alternative Design Schemes for the Gardner Lane Area**, Cella Barr Associates.
- * November 10, 1981, **Report on Existing 100-year Flooding Conditions within The Gardner Lane Area**, Cella Barr Associates.
- * August 15, 1983, **Critical Watershed Management Plan, Ruthrauff Road Area**, Cella Barr Associates.
- * August 15, 1983, **Main Report, Critical Watershed Management Plan, Ruthrauff Road Area**, Cella Barr Associates.
- * December 17, 1993 (Revised November, 1995), **Existing-Conditions Hydrologic Modeling for the Tucson Stormwater Management Study, Phase II, Stormwater Master Plan**, Simons, Li & Associates, Inc.
- * December 15, 1995, **Final Report, Tucson Stormwater Management Study, Phase II, Stormwater Master Plan**, Simon, Li & Associates, Inc.
- * April 2011, **I-10 Mainline Reconstruction, Casa Grande-Tucson Highway (I-10) Ruthrauff Road to Prince Road, Final Drainage Report**, AECOM.
- * June 16, 2011, **Flood Insurance Study, Pima County, Arizona and Incorporated Areas**, Federal Emergency Management Agency.

Project Overview continued

- * Existing Conditions
 - * Interstate 10 Drainage Structures

Interstate 10 Drainage Structures







Project Overview continued

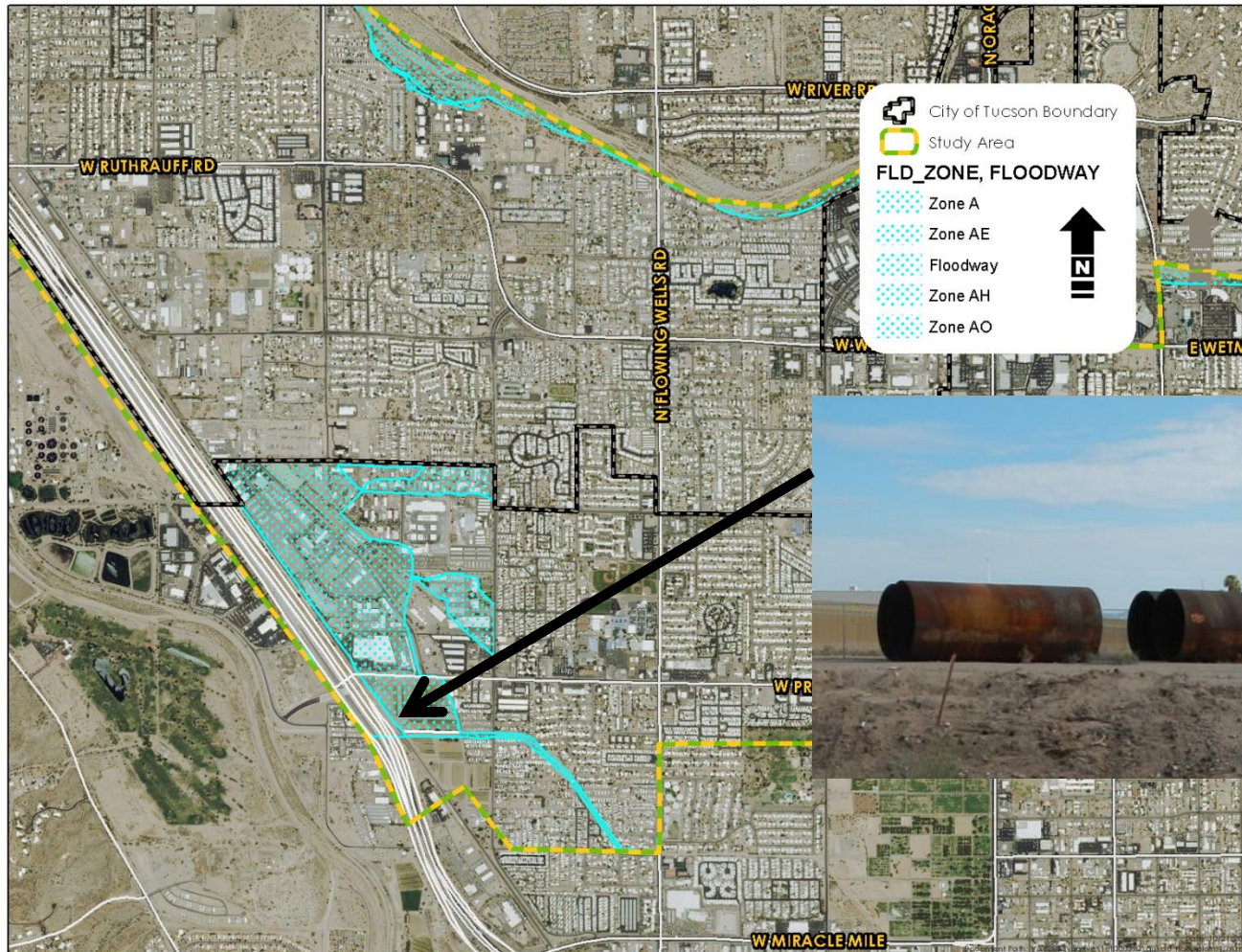
- * Hydrologic Analysis and Floodplain Delineation

Preliminary Flo-2D

Project Overview continued

FEMA Map Revision

Existing FEMA Floodplains



Project Overview continued

Alternatives Analysis and Remediation Recommendation

Alternatives analysis process

1 • Agree on performance criteria

2 • Develop weighting values for performance criteria

3 • Develop alternatives without consideration of cost

4 • Score the alternatives using performance criteria

5 • Add costs to determine scoring with costs

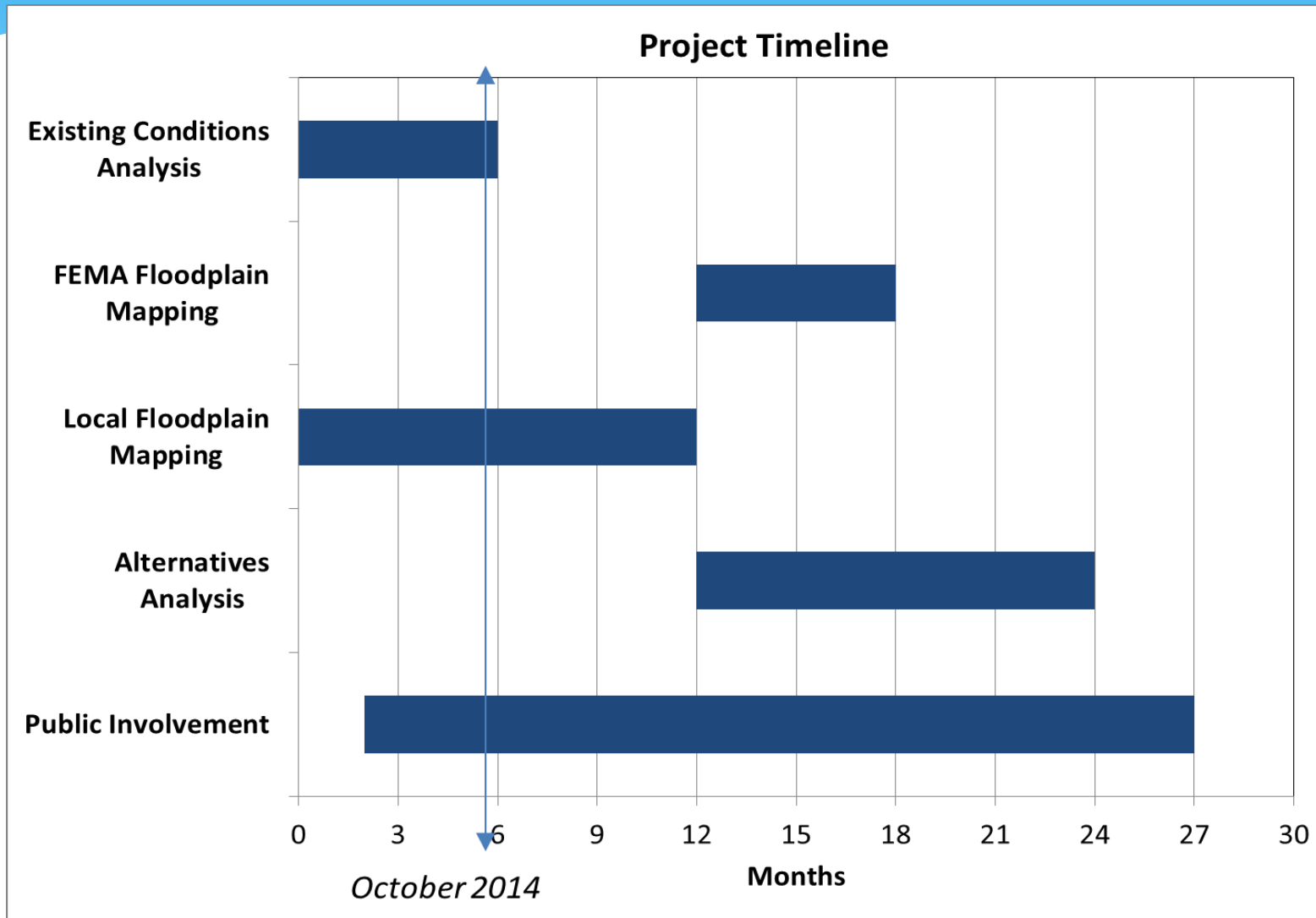
6 • Complete a fatal flaw analysis

7 • Determine recommended alternative based on final score

Project Overview continued

Schedule

Schedule



Project Overview continued

- * Deliverables

- * Existing Condition Report
- * Hydrologic Analysis and Local Floodplain Maps
- * New FEMA Floodplain Maps for Flowing Wells Wash
- * Final Report Consisting Of...
 - * Alternative Selection Report
 - * Implementation Plan
 - * Public Outreach Summary Report

Stakeholder Involvement and Input

- * Individual Questions/Comments?
- * What can you tell us about flooding in your area?
- * Are there other Stakeholders we should contact?
- * Other Comments or Ideas?

Summary/Next Steps

- * Regular Progress Updates will be Sent
- * Continue to Update Website
- * Winter Public Meeting
- * Continued Stakeholder Coordination
- * Deliverable Production

Adjourn
Thank You!