

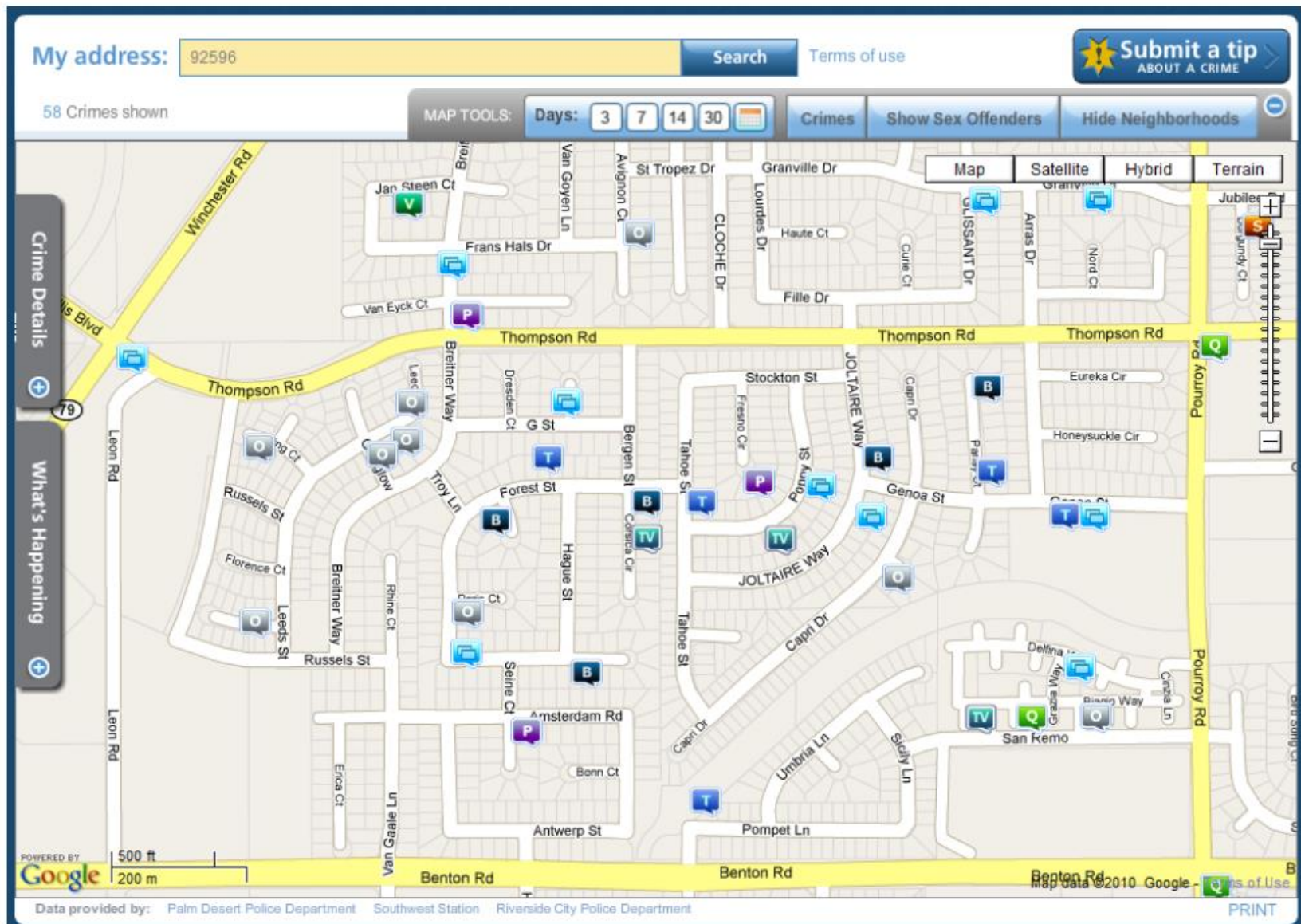
Let's Share The Park Project



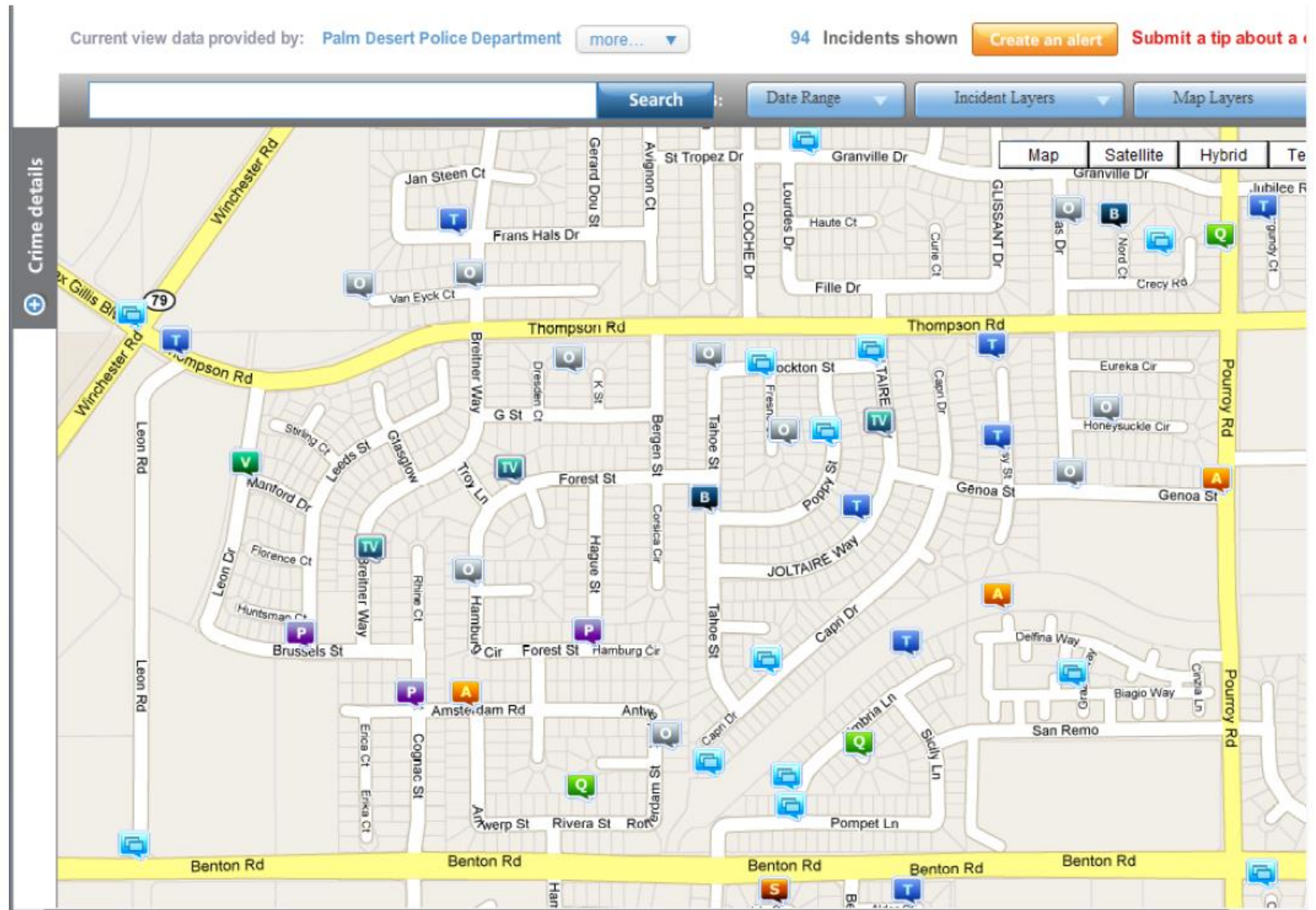
The Rembrandt Community would like to extend an invitation to Monet residents to fairly share our park's use and responsibilities.

The Rembrandt BOD would like to discuss with the Monet BOD the rash of vandalism and break-ins we have been experiencing at the Rembrandt Community Park and surrounding community, the measures we are taking to stop it such as Police enforcement of trespassing and our plan to replace the gate(s) on the fence, and our invitation to Monet residents to fairly share our park's use and responsibilities.

Crimes reported 3-17-2010 to 9-17-2010 on www.CrimeReports.com:



Crimes reported 9-16-2010 to 3-16-2011 on www.CrimeReports.com:



Police were dispatched to our community park 5-29-10 after dark - reports of loud party and possible vandalism

Loud party and loud "bang" reported 6-5-10 after dark at our community park

Offensive graffiti found on our picnic tables and a lot of litter (including large glass beer bottle) found 6-6-10 (pictures below)



This is getting worse and until we do something about it, and let these vandals know we are doing something, it will keep getting worse. Please call or send an email to our Association Manager Debbie Simonetti (951) 296-5640 dsimonetti@equitymgt.com to show support, report vandalism occurring, or be a part of the Neighborhood Watch program we are trying to start. We have to work together as a community to stop this and other vandalism.



Break-In and Vandalism to a home 7-12-10

Five Police cars quickly arrived after an alert neighbor noticed five teenagers unload from a black truck parked down the street and go through the gate to the backyard of an apparent abandoned house on Breman Court. It appeared the Police questioned and released the five teenagers to their parents. A Police Officer reported that graffiti had been sprayed on the walls inside the house. We are all grateful to have such an alert and courteous neighbor. Please join her and come to the community park (while we still have one) 7/17/10 at 11:00am to hear about how we can stop this growing vandalism problem with our new Neighborhood Watch program. Bring a lawn chair, a cold-drink, a frisbee/football/soccer ball, and your good ideas!!



Disgusting Trash Found in Park 8-7-10

I had to discreetly fish a used condom out of the swing area without my young nieces and nephew seeing it! I'll spare you the picture this time! We need the gates back on the park and close the park after dark. What's next?



Vehicle Break-in and Theft reported on Bradford 10-11-10

There was a vehicle break-in and theft of property on Bradford last weekend. Please be sure to lock your vehicle(s) and keep an eye out for anyone suspiciously looking in cars. The Police officer that visited our last Neighborhood Watch meeting recommended we not confront suspicious persons; but we should report their activities immediately to the Police and document anything that could identify the person(s). It's up to us to help law enforcement keep our neighborhood safe through our Neighborhood Watch program and by keeping an eye out!

Park Vandalism Found 1-9-11

Well, it looks they have stepped it up a notch; and so did we! The graffiti below appeared under our gazebo and it has been reported to the Police Special Enforcement Team. We filed a document at the French Valley Police station stating we will press charges and requested extra patrols so when they find someone in the park after dark they are authorized to cite/arrest. Let's hope they get the message!



Park Vandalism Found 1-27-11

The graffiti below appeared under our gazebo and it has also been reported to the Police Special Enforcement Team. Some of this graffiti is getting really offensive and we must stop it! If you see anyone drawing or in the park after dark PLEASE call the police non-emergency number 951-776-1099 and report it immediately. Your neighbors thank you!



*** CONTENT WARNING ***

The following slide contains graffiti with profanity, racial slurs, and strong sexual material. If you are offended by this or have children viewing this then quickly advance past the next page. Keep in mind this was found on the kids slide!

Park Vandalism Found 3-5-11

More graffiti, too disgusting to show with pictures, appeared where the little kids play – on the jungle-gym! Really disgusting racial slurs and sexual references. If we all keep an eye out we will catch these deviants eventually. If you see anyone drawing or in the park after dark PLEASE call the Police non-emergency number **951-776-1099** and report it immediately. Your neighbors thank you!





NO TRESPASSING

**PRIVATE
PARK**

**FOR THE EXCLUSIVE USE OF
REMBRANDT
ASSOCIATION
MEMBERS ONLY.**

**HOURS ARE
SUNRISE TO SUNSET**

**ALL VIOLATORS WILL BE
PROSECUTED TO THE FULL
EXTENT OF THE LAW.**

C.O.R. ORDINANCE# 555.(1-4)

We would like to invite our friends in the Monet community to all have keys to the gates so they can legally use our private park and have a voice in its use, upgrades, and management. We would also like to offer to help our friends in the Monet community set-up a Neighborhood Watch program as we have done and to work together to stop the vandalism and break-ins before it gets any worse. We have to make a stand and we invite the Monet community to join us so we can all enjoy a community park that is private, well maintained and available for use by families.

We have filed a document with the Police that states we will press charges against vandals, trespassers, and anyone damaging the fence to gain access (as the signs posted at each entrance clearly indicate) and since our Neighborhood Watch Program members are watching closely and calling the Police when necessary, we want to make sure our friends in Monet can have legal access to the park by issuing keys to all Monet residents.

We only ask that the Monet residents use a small part of their monthly HOA dues to pay a fair share for the maintenance, contribute to the replacement reserve fund, and to play an active role watching the park for vandalism, littering, and trespassing. The Rembrandt community would like to extend this invitation to make things fair and include the friends we have made in Monet community in our efforts to keep our park a safe and fun place for all of us to enjoy.

Although the following is not a BOD approved offer, it will serve as a foundation to base the feasibility discussion upon:

Maintenance	2010 Costs
electric	788.57
water	9,837.41
reserve	1,800.00
fence repair	980.00
est. insurance	6,274.44
	<u>19,680.42</u>

<u>cost/250 units</u>	<u>unit cost/month</u>
78.72	6.56

<u>Tennis Court Proposal</u>	
Estimated "ballpark" cost	70,000.00

<u>cost/250 units</u>	<u>unit cost/month 5 years</u>
280.00	4.67

