

# Battery Gaillard



*Historic Homesites on Church Creek — Charleston, South Carolina*

# Battery Gaillard History

Centrally located in West Ashley Battery Gaillard is a land rich with heritage and legend. During the American Civil War, an earthen fortification was erected on this property and was known as Battery Gaillard. Like the nearby Fort Bull at the intersection of the Ashley River Road and the Charleston Railroad line, these batteries were never garrisoned due to the primary military actions were all located on James Island.

Initially, the land of Battery Gaillard belonging to the Saint Andrew Episcopal Church from 1706 to the late 1800s. The land was then conveyed to the Dotter and then later to the Hannahan families who held the phosphate mining interests for much of the mined area in Saint Andrews Parish.

The property remained in the ownership of the Hannahans and the Phosphate Company until 1954 when it was conveyed to in 1960 to T.M. who then transferred the property to the Lucas family in 1972.



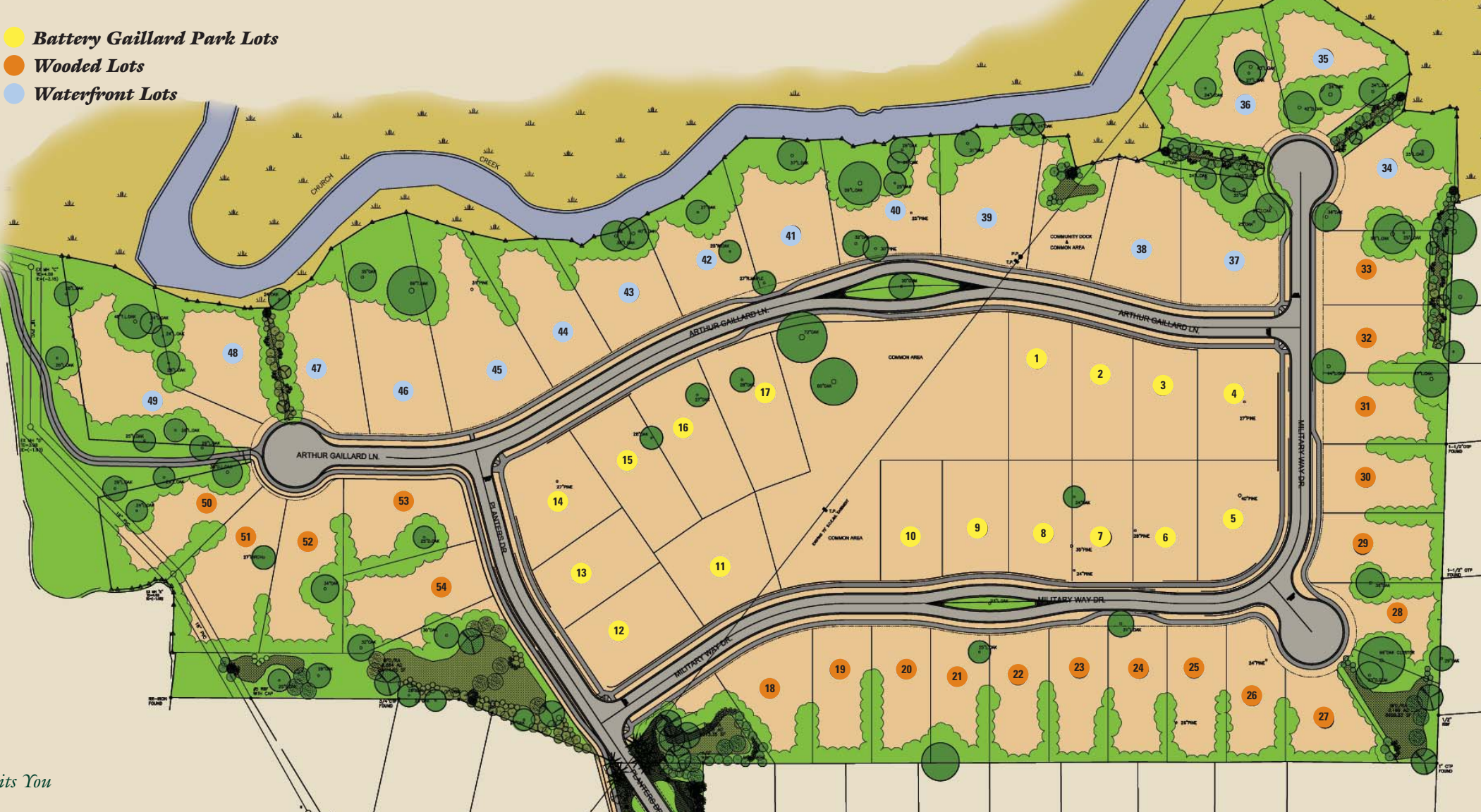
*Caption connecting the urn and Battery Gaillard.*



Battery Gaillard  
Park Lots

Lot #	Size (sq.ft.)
1	10,254
2	6,952
3	10,158
4	11,254
5	7,378
6	5,158
7	3,892
8	4,825
9	8,952
10	7,378
11	10,158
12	4,825
13	9,378
14	7,254
15	5,254
16	4,825
17	7,158

- Battery Gaillard Park Lots
- Wooded Lots
- Waterfront Lots



Wooded Lots

Lot #	Size (sq.ft.)
18	9,378
19	5,892
20	6,952
21	5,254
22	9,378
23	4,378
24	6,158
25	7,378
26	4,254
27	9,378
28	9,378
29	6,952
30	5,158
31	9,378
32	5,378
33	6,158
49	7,378
50	6,892
51	7,378
52	9,254
53	9,378
54	6,952

Water Front Lots

Lot #	Size (sq.ft.)
34	7,378
35	7,952
36	9,378
37	5,254
38	4,892
39	5,378
40	6,158
41	9,378
42	7,378
43	5,952
44	6,254
45	5,254
46	4,825
47	9,378
48	8,158



*The Bluffton is a two-story, single-family residence with front and side piazzas.*

*The Auberdine is a single-family, two-story residence with a full front and side wrap-around piazza.*

*The Auberdine is a single-family, two-story residence with a full front and side wrap-around piazza.*

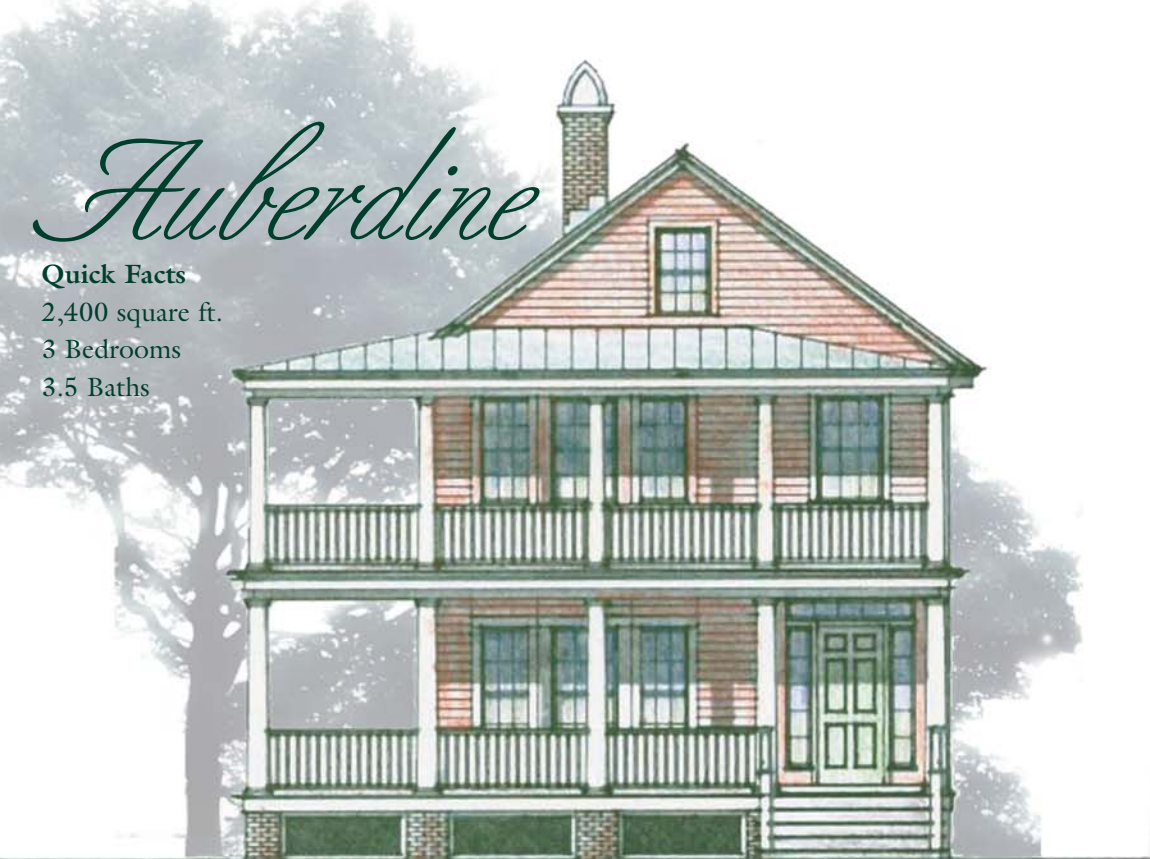


*The Woodlawn is a single-family, two-story facade that recedes into one-story at the rear of the house. It has a front porch and side deck.*

*The Woodlawn is a single-family, two-story facade that recedes into one-story at the rear of the house. It has a front porch and side deck.*



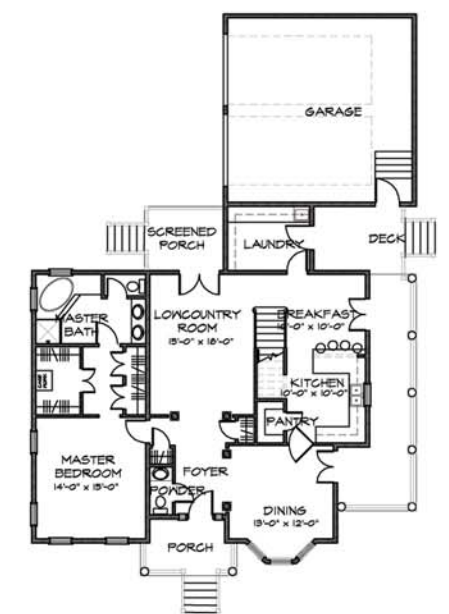
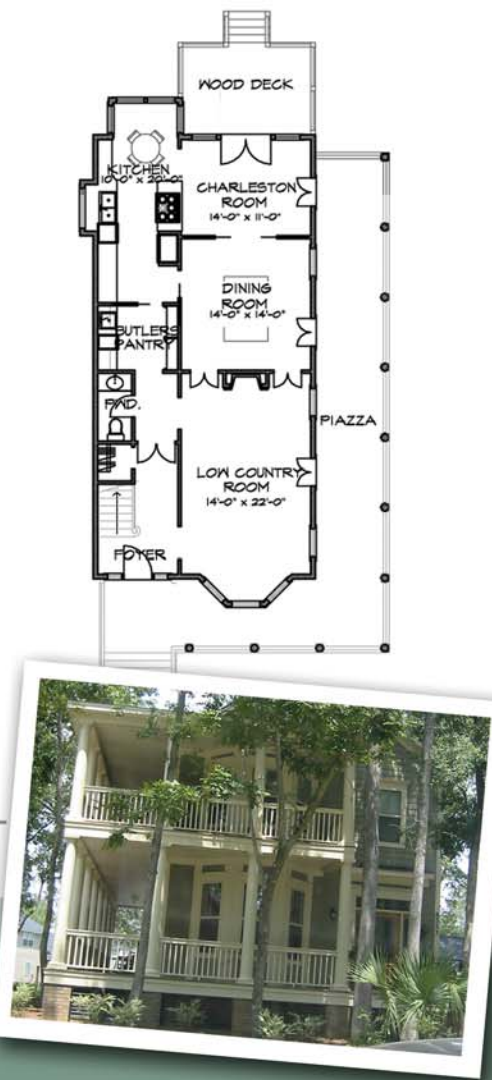




# Auberdine

**Quick Facts**  
 2,400 square ft.  
 3 Bedrooms  
 3.5 Baths

*The Auberdine is a single-family, two-story residence with a full front and side wrap-around piazza.*



# Bluffton

**Quick Facts**  
 2,300 square ft.  
 4 Bedrooms  
 3.5 Baths



*The Bluffton is a two-story, single-family residence with front and side piazzas.*

## Credits Page

Architect

Landscape Architect

Developer

Builder



*Battery*  *Gaillard*