

Spring Issue April/May/June; Volume 17, No. 2  
**THE ORCHARD BREEZE**  
(Boundaries: The Big Ditch, Central, West and Maple)

## Welcome to the Orchard Breeze Neighborhood Association Newsletter

### Message From The President . . .

I want to take this opportunity to say what an honor it is to now serve as your newly elected President. I am committed to continue the work of OBNA, re-establish relationships and to look for ways to strengthen our association like it was in the past. The Board has been actively planning an exciting and full calendar of upcoming events for the neighborhood.

**Public Meetings** have been held regarding expansion of highway I235 from Kellogg to 13<sup>th</sup> Street North. See page 6 for more information.

**Re-establishing Relationships and friendships** of our Neighborhood Association, Churches, Businesses, Seniors, and encouraging Youth Involvement (community services, events, jobs, etc.) We are making efforts to re-establish relationships with those with interest in keeping our neighborhood safe, healthy and beautiful. See articles on pages 4 entitled Thank You and an article by Westar Energy on page 7.

**Community Garden** – Workshop at Sedgwick County Extension Building February, Danny Oliver/Master Gardener spoke at general meeting in March. For more information, those interested in Community Gardening may contact Loretta Buckner at 573-2008. See article on last page 8.

**Newsletters** - We plan to publish four newsletter each year on a quarterly basis. First issue Winter Jan/Feb/Mar, Second issue Spring Apr/May/June; upcoming is Summer issue July/Aug/Sep and Fall issue Oct/Nov/Dec

### Neighborhood Concerns

OBNA has been voicing concerns about parking and traffic congestion at the corner of Anna Street and Second Street involving USD 259, Dodge Magnet School, Buses, and area residents. Please feel free to contact a Board member for any other concerns.

Message From The President (continued on page 2)

I would like to give a Big Thank You to our  
past OBNA Board for a job well done.  
See page 4 for the Year 2012 in Review.

### 2013 BOARD OF DIRECTORS

President/Loretta Buckner-573-2009; [true2himrep@gmail.com](mailto:true2himrep@gmail.com)  
Vice President/Candy Hinkle-409-5448; [countrygirl10781@gmail.com](mailto:countrygirl10781@gmail.com)  
Treasurer/Kathy Riker-944-0724; [kriker@wichita.edu](mailto:kriker@wichita.edu)  
Secretary/Rachel Foster-942-3585; [rfoster9824@hotmail.com](mailto:rfoster9824@hotmail.com)  
Past-President/Candy Warren – 942-1140; [cwarren1976@yahoo.com](mailto:cwarren1976@yahoo.com)

### Community Police Officer

Darrin Williams –316/337-9126; [drwilliams@wichita.gov](mailto:drwilliams@wichita.gov)

### **\*ONBA MEETING CALENDAR**

Jan 3 – 7pm–9pm Board meeting  
Feb 7 - 7pm–9pm general meeting  
Mar 7- 7pm–9pm Board meeting  
Apr 4- 7pm–9pm general meeting  
May 2- 7pm – 9pm Board meeting  
June 6- 7pm – 9pm general meeting  
July 4 – HOLIDAY (No Meeting)  
Aug 1- 6:30pm–9pm general meeting  
(Ice Cream Social)  
Sep 5- 7pm – 9pm Board meeting  
Oct 3 – 6:30pm – 9pm Chili Supper,  
Board Elections and general meeting, to  
be held at VFW Post 3115 banquet room  
Nov 7- 7pm – 9pm Board meeting  
Dec 5- 6pm – 9:00pm (Holiday Social)  
**\*Note: Children welcome at all meetings.**

## President's Message (continued from page 1)

### LOVE Wichita Work Day

Where: throughout our Neighborhood, City and County  
Date: Saturday April 27, 2013  
Time: 8:00am to 5:00pm

### Neighborhood CleanUp Day

Where: Near corner of First Street and Hoover Street  
Date: Saturday May 18, 2013  
Time: 8:00am – 12:00 noon



June – General Meeting (prepare upcoming newsletter)  
Where: Kiwanis Park, 5101 W. 2nd St. North, Wichita,  
Date: Thursday June 06, 2013  
Time: 7:00pm – 9:00pm

July – No Board Meeting due to Independence Day Holiday



### August Ice Cream Social

Where: Kiwanis Park, 5101 W. 2nd St. North, Wichita, KS  
Date: Thursday August 01, 2013  
Time: 6:30pm – 7:00 pm Ice Cream; 7:00pm – 9:00pm General Meeting and Clean-Up



### Party In The Park

National Neighborhood Day occurs annually in September. Our Party-In-The-Park is a great opportunity to celebrate this day and help raise funds for our neighborhood association.  
Where: Kiwanis Park, 5101 W. 2nd St. North, Wichita,  
Date: Sunday September 29, 2013  
Time: 3:00 pm – 5:00 pm BBQ; 5:00pm – 6:00pm Drawing for Prizes (flat screen TV, MP3 Player, Tablet and much more); 6:00pm to 7:00pm Clean-Up  
Menu: (Items for Sale to Raise Funds) Beef Burgers, Veggie Burgers, Beef Hot Dogs; Soft Drinks. Bring sides for Potluck of salads, fruit trays, veggies trays, chips, cookies, and several desserts

Coolcom



### Celebrate Safe Communities

Where: To Be Announced  
Date: October 2013 – To Be Announced



Time: 6:00pm – 8:00 pm Food, Fun & Games; Display emergency/safety equipment;  
8:30pm – 9:00pm CleanUp  
Menu: Hot Dogs; Soft Drinks; Sides: Potluck of salads, fruit trays, veggies trays, chips, cookies

### Neighborhood-Wide Garage Sale — Yes, plans were



to have a neighborhood-wide garage sale the first week in May, specifically May 2, 3, 4 & 5. However, the weather was not cooperating and time was becoming an issue. We plan to have a Fall Neighborhood-Wide Garage Sale. More details will be announced in an upcoming newsletter.

### OBNA Board Elections and Chili Supper



Where: VFW Post 3115, Douglas and Anna, in the Banquet Room  
Date: Thursday October 03, 2013  
Time: 6:30pm – 7:00 pm Chili; 7:00pm – 9:00pm General Meeting and Elections; Clean-Up

### Thanks and Giving – Gift Baskets for Needy, Thanks to

Volunteers Chairperson, Candy Hinkle at 409-5448  
Where: Kiwanis Park, 5101 W. 2nd St. North, Wichita  
Date: Thursday November 7, 2013  
Time: 7:00pm – 9:00pm

### Christmas Holiday Social

Where: Kiwanis Park, 5101 W. 2nd St. North, Wichita  
Date: Thursday December 5, 2015  
Time: 6:00pm – 8:00pm



## MEET YOUR OBNA BOARD—

**Loretta Buckner** is the newly elected President of OBNA. Other OBNA Board positions Buckner has served in past years are: Board Secretary for four years, and Member-At-Large for two years. For the past three years, Ms. Buckner has been an active member of Neighborhoods, USA. For the past three years, Ms. Buckner has been a volunteer and currently serves on the Board of P.O.W.E.R. (People Organized Working for Economic Recovery ) Community Development Corporation. For the past seven years, Ms. Buckner has been a volunteer and Board member of Wichita Independent Neighborhoods, Inc.. For the past seventeen years, Ms. Buckner has worked as a volunteer and served on the Board of Orchard Breeze Neighborhood Association.

**Introducing OBNA Board Vice President — Candy Hinkle** remains on the 2013 Board as Vice President. Other OBNA Board positions Hinkle has served in past years are: Treasurer, Member-At-Large and Chairperson for Spring Festival.

**Introducing OBNA Board Treasurer — Kathy Riker** is the newly elected Treasurer of OBNA. Ms. Riker is excited about serving on the Board, wants to be more involved in our neighborhood issue, and to learn how the system works. Ms. Riker brings to the table her willingness to help and get involved in whatever she can to help better our neighborhood.

As for the near future, Ms. Riker wants to see more neighborhood people get involved in the work of the neighborhood association. According to Riker, "I don't think people are aware, or they think they don't have anything to add to the community. Everyone has something to add. We need to all be more involved and make the City, County and State accountable for our tax dollars. We should have a say in what goes on."

Ms. Riker has lived in the neighborhood since March 1988. Along with her husband, they raised two daughters in this neighborhood and who both attended Dodge-Edison School at that time. Riker said, "It was a great school for my girls to have a chance to attend. I have seen the neighborhood improve over the 25 years I have lived here. I now have my four grandchildren over to visit often on the weekends and want a friendly safe neighborhood for them to be in when they are at my home."

**Introducing OBNA Board Secretary — Rachel Foster** remains on the 2013 Board as Secretary. Other OBNA Board positions Foster has served in past years are: Treasurer and Vice President.

**Past-President — Clara Warren** remains on the 2013 Board as Past-President. Other OBNA Board positions Warren has served in past years are: Vice President and Secretary

### Neighborhood Cleanup May 18<sup>th</sup>

Kathy Riker and Loretta Buckner attended mandatory cleanup meeting at Linwood. Clara Warren and Rachel Foster attended the same meeting on March at Atwater City Hall.



**Volunteers** – We have asked for twelve people to assist with this event as follows: VFW Post (3 people), WIN (2 people), OBNA (6 people).

OBNA Clean Up will be Saturday May 18, 2013 from 8am to 11am. The dumpsters will be on Hoover between 1<sup>st</sup> and 2<sup>nd</sup> Street again this year. We ask that you line up heading North on Hoover starting at Douglas. We will have the side streets leading to Hoover blocked off. No early dumping will be allowed! You must live within OBNA Boundaries (Hoover to Central to West to Maple) to participate in this clean up.

We will **not** be doing any curb side pickup this year. You are responsible for transporting your items to the dumpsters. Please remember that you can't dispose of hazardous materials, appliances with refrigerant, paint or chemicals of any kind. We will have the Tire Truck this year but you are not allowed to dump a large quantity. If you have paint, cleaners or chemicals you can take them to The Sedgwick County Household Hazardous Waste Facility located at 801 Stillwell.

We are still looking for a few volunteers to help watch dumpsters. If you have any questions or would like to volunteer please call Clara Warren at 316-942-1140 or Rachel Foster at 316-942-3585.

**WIN's Neighborhood University Sep 21, 2013** — This year's NU is a can't-miss educational event for professionals interested in improving the quality of life in their neighborhoods and community. The diverse educational program consists of leadership sessions, a youth engagement workshop, awards program, certificates of attendance, two keynote speakers and a workshop evaluation survey. All will benefit from this networking and information exchange day, so rush to Wichita for this exciting opportunity!

## YEAR 2012 IN REVIEW . . .

We would like to thank the 2012 OBNA Board for a job well done serving our neighborhood.

President/Clara Warren, Vice President/Rachel Foster, Secretary/Dan Foster, and Treasurer/Candy Hinkle.

Other volunteers serving our area included Parks & Recreation Chairperson, Jerry Warren and Community Garden Chairperson, Brad Hinkle.

Items OBNA has taken action on in the past:

1. Zoning change that would allow GraceMed to have the facility on the same property as the USD 259 school Dodge. Parents and neighbors are aware of the current parking situation at Dodge, which is unsafe. We have all voiced concerns about the clinic adding more parking issues to the area.
2. Zoning change that would allow development of a multi-family duplex at corner of Baehr and Second Street.
3. Events included Ice Cream Social, Chili Supper and the Holiday Social.

### CHECK OUT OBNA'S NEW WEBSITE

You may have noticed that OBNA has launched a new website. Delete the old web address and add this new address to your favorites:

[http://www.neighborhoodlink.com/Orchard\\_Breeze](http://www.neighborhoodlink.com/Orchard_Breeze)

The new website is easier to navigate. Visit the site often and check out any important announcements & news from the Board and current happenings. There may also be proposed changes to our Bylaws or rules and regulations, and much much more.

## BE ACTIVE — BE INVOLVED

Fundraising Ideas: Consider how you can help make OBNA a success. 1) Area merchants that would like to advertise in the newsletter, make a donation, donate door prizes, gift certificates, gift certificates for gas, car washes, meals, movies, and bowling. 2) Find an item in good condition you want to pass on as a white elephant prize. 3) Plan to donate a craft, plant, food item, or other gift, or service. 4) Attend monthly meetings during the year 2013 to be eligible for drawings and to win a door prize. 5) Offer to bring toppings and condiments for our ice cream social and 6) help bake a ham or turkey for our Holiday Social. 7) Volunteer to set up tables and chairs for meetings and events, decorate tables, or clean-up after meetings and events. 8) Help provide music at events and Party-In-The-Park. Every family attending events will be asked to bring a side dish or dessert.

### YOUR MISSION IS: TO KEEP OUR NEIGHBORHOOD ASSOCIATION ALIVE!

#### OBNA'S MISSION STATEMENT

The Orchard Breeze Neighborhood is an established, friendly community that is rich in diversity and history and is committed to a healthy and safe environment.

#### OBNA'S VISION STATEMENT

There's nothing you wouldn't do to keep our neighborhoods safe, healthy and beautiful.

Most of us share these same common concerns.

## THANK YOU TO OUR MANY SUPPORTERS

THANK YOU\*THANK YOU\* THANK YOU\*THANK YOU

**WESTAR ENERGY** Hoover Street Substation for providing the land and water for our community garden.

**VFW POST 3115, MEN & WOMEN'S AUXILIARY** for providing a meeting room for our general meetings. Also, for sponsoring gift baskets for families in need and providing volunteers.

**CITY OF WICHITA PARKS & RECREATION** for providing Kiwanis Park Building for our general meetings, board meetings and events.

**WICHITA INDEPENDENT NEIGHBORHOODS** for their assistance with OBNA's Non-Profit 501 (c) 3 Tax Exempt status; also for providing volunteers.

THANK YOU\*THANK YOU\* THANK YOU\*THANK YOU

### Newsletters - Four (4) quarterly issues per year:

**Dec 26** deadline for Winter Issue Jan-Feb-Mar

**Mar 26** deadline for Spring Issue Apr-May-June

**June 26** deadline for Summer Issue July-Aug-Sep

**Sep 26** deadline for Fall Issue Oct-Nov-Dec

**SUPPORT OBNA AND PLACE AN ADVERTISEMENT  
IN OUR NEWSLETTER. THANK YOU FOR SUP-  
PORTING YOUR NEIGHBORHOOD ASSOCIATION.**

1 ISSUE	2 ISSUES	3—4 ISSUES
RATE*(PREPAID)	RATE*(PREPAID)	RATE*(PREPAID)
1/8 pg \$ 10.00	1/8 pg \$ 20.00	1/8 pg \$ 40.00
1/4 pg \$ 20.00	1/4 pg \$ 40.00	1/4 pg \$ 80.00
1/2 pg \$ 50.00	1/2 pg \$100.00	1/2 pg \$200.00
Full pg\$100.00	Full pg\$150.00	Full pg\$300.00



**AS A RESULT OF REDISTRICTING, OBNA'S BOUNDARIES ARE NOW WITHIN THE BOUNDARIES OF DISTRICTS 4, 5 WITH THE MAJORITY OF THE AREA WITHIN DISTRICT 6**

**According to new maps, please note Orchard Breeze NA is within Districts 4, 5 and 6 as described below:**

**District 4** boundaries for Orchard Breeze NA are:

north – Douglas Street, south – Maple Street, east – West Street, and west – I235.

**District 5** boundaries for Orchard Breeze NA are:

north – Central Street, south – Maple, east – I235, west – Big Ditch.

**District 6** boundaries for Orchard Breeze NA are:

north – Central Street, south – Douglas, east – West Street, and west - I235

**Please attend your DAB meetings**

DAB 4 (southwest) Stanley/Aley, 1749 S. Martinson. Neighborhood Assistant is Kelli Geier 303-8008.

DAB 5 (west) meets at Auburn Hills Clubhouse-135th and Maple. Neighborhood Assistant is LaShonda Barnes 268-4351

DAB 6 (northwest) meets at Evergreen Recreation Center Lounge Clubroom, 2700 N. Woodland. Neighborhood Assistant is Teri Dozal, 303-8042.



2755 E. 19<sup>th</sup> St. N., Wichita, KS 67214

[win@winwichita.kscoxmail.com](mailto:win@winwichita.kscoxmail.com)

Phone 316/260-8000

Fax 316/264-9965

**What's on the Agenda for WIN's Upcoming General Meeting  
Monday May 20, 2013 at 5:30 p.m.**

How Does A Unified City and County Code Enforcement Department Have An Impact On Your Neighborhood

Mr. Tom Stolz is our guest speaker who will be discussing OCI and Code issues which are now overseen by a single set of trade boards, and a single data-management system is being used to track building permits, licenses and inspections. This merger was due in part to efforts for consolidating services to save money, and to improve service to the trades.

Mr. Lynn Rogers of USD 259 School Board will attend and will be available to answer any questions the general audience may have concerning school closings and other Wichita Public School issues.

## CALENDAR OF OTHER ACTIVITIES & HOLIDAYS

April 15 – 19, 2013 GO ORANGE!!! Orange Day is on April 16 - everyone is encouraged to wear orange to show support for Kansas highway workers National Work Zone Awareness Week April 15 – 19, 2013. Drive Safe In Work Zones!

### The Coalition is sponsoring a Final Friday Art Show...

Theme: Change the Rules! Everyone deserves to feel safe  
Observing Sexual Assault Awareness Month, April 2013



May 11—Mother's Day  
May 18—OBNA Neighborhood CleanUp  
May 22 – USD 259 Last Day of School  
May 27—Memorial Day Observed  
May 31 – June 8 - Wichita River Festival-The 2013 Sundown Parade celebrates the 42<sup>nd</sup> anniversary of Riverfest, bringing fun and

excitement for the whole family. For more information contact Wichita Festivals, Inc. at 316/267-2817 or on web at

[www.wichitariverfest.com](http://www.wichitariverfest.com).

June – Black Music Month is celebrated!

June 6 – National Running Day

June 12 – National Peanut Butter Cookie Day

June 14 – Flag Day

June 17 – Father's Day

June 22 – Take Your Dog to Work Day

## WICHITA FIRE DEPARTMENT F.L.A.S.H. PROGRAM

The Wichita Fire Department's daily mission is to provide the community excellent, proactive, fire and life safety services through prevention, education, and protection. Obviously, the best practice to ensure your home does not experience the ravages of fire, is through a strong message of prevention and safety. For these reasons the Wichita Fire Department's 22 stations participate in the Fire Loss Awareness for Safer Homes after a structure fire in their respective districts.

F.L.A.S.H. originated in October of 2007, and consists of firefighters, from the stations in your neighborhoods, going door to door explaining the nature of the fire that occurred. Also, they can offer tips for preventing a similar fire in your house; as well as, answering questions you may have about keeping your family safe in an emergency. Through the efforts of citizens and the Wichita Fire Department, the occurrence of fires in our community can be minimized through the education gained from the F.L.A.S.H. program. To illustrate this; the total number of residential structure fire incidents per 1,000 population has continued to decrease from 4.41 to 2.80 residential fires per 1,000 people. The Wichita Fire Department welcomes you to join them in preventing future fires and getting to know your neighborhood firefighters; not only through the F.L.A.S.H. program, but by visiting your neighborhood fire station.

=====END=====

## TRAFFIC CONGESTION PROBLEMS

Residents living north of Kellogg and I-235 have been looking forward to a solution to the traffic congestion problems, especially near the Kellogg onramp and Central offramp. Work has begun on a two-year, \$23 million project that will add two new access ramps to I-235 in south central Kansas. Addressing continuous growth on Wichita's west side and few commuter crossings over the Wichita—Valley Center Floodway, this project will feature a ramp to southbound I-235 from eastbound 13th Street and a ramp from northbound I-235 to westbound 13th Street – both featuring long bridges over the floodway. The project was designed and is financed by the City of Wichita but the Wichita West Construction Office is handling administration and inspection duties.



---

### 15 Beat Mail Thefts

#### Primary Days:

**Saturday/Monday/Wednesday/Thursday/Friday**

**Times:0800-1715 hrs**

Presidents,

In the Past few months we have received several reports of mail theft in the Orchard Breeze and Orchard Park areas. Which at times has resulted in the loss of tax returns. I wanted to get the information out to your communities as I have not been able to attend any meetings. If you have any questions please feel free to email me and let me know what you would like me to send you. My email address is Drwilliams@wichita.gov. Also if anyone knows who is riding go carts in the Orchard Breeze and Orchard Park areas or sees a go cart riding on the streets in the area please notify me of the location and also call 911 to report it so that we can attempt to make contact. If we can contact the parents hopefully we can keep our neighborhood a little quieter. (Article by Darrin Williams/Community Police Officer, at 316/337-9126; email DRWilliams@wichita.gov.)

=====END=====

## CLOSE THE DOOR ON YOUR HOME'S ENERGY LOSSES

Spring is a great time to begin thinking about what you can do to minimize air leaks and make sure your cooling equipment is in good working order.

But just how can you locate and repair air leaks and examine other areas of your home that might be costing you more than necessary on your energy bill? The team of EfficiencyWorks experts at Westar Energy is eager to help. Join us to learn how to make your home more energy efficient.

Whether your home's style is cottage, colonial or contemporary, there are easy, cost-effective steps you can take to improve comfort and conserve energy, and Westar Energy will show you how. We are hosting a Home Energy Savings Workshop that will equip you with information to assess your home's energy efficiency in order to make changes (even simple, inexpensive ones) that can save you money and energy. At this three-hour session, you'll learn about:

- The importance of keeping heating and cooling equipment in good working order
- How to locate and repair air leaks around windows and doors
- What type of insulation is best in different areas of your home
- Options in efficient water heating
- How to choose the best energy efficient light bulb
- Ways to manage the energy usage of your appliances and electronics

### Workshop details

Each participant will have the opportunity to purchase a weatherization kit for \$20. Classes are limited to 75 participants. Everyone who registers will be entered into a drawing for two \$100 gift certificates to a local home improvement store. Must be present to win.

### Register for a workshop near you at

<http://www.westarenergy.com/wcm.nsf/content/home%20energy%20savings>

or by contacting Tammie Rhea/Westar Energy at 316.261.6535 or [tammie.rhea@westarenergy.com](mailto:tammie.rhea@westarenergy.com).

EMAIL: change

Maxine Bostic [[luverne22@yahoo.com](mailto:luverne22@yahoo.com)]

## CITY'S ARBOR DAY CELEBRATION HONORS OLIVER

The city's annual Arbor Day Celebration and Tree Fair was held Friday April 26th at the Kiwanis Park shelter, 5101 W. Second St. Project Beauty featured the Kentucky Coffee Tree as its 2013 tree and sold seedlings for \$10.

A Kentucky coffee tree was planted during the celebration in honor of Danny Oliver for his service to the community. Oliver retired last year from the city of Wichita's Park and Recreation Department, where he spent his career working with trees.

The Kentucky coffee tree is a hardy shade tree for large properties, Project Beauty says, and "is most interesting in winter landscape, bare and bold." In pioneer days, people roasted the seeds, ground them and made coffee, according to Carol Graham and Jean Wellshear of Project Beauty. (Submitted by Clara Warren)

## SUMMER LUNCH LOCATIONS

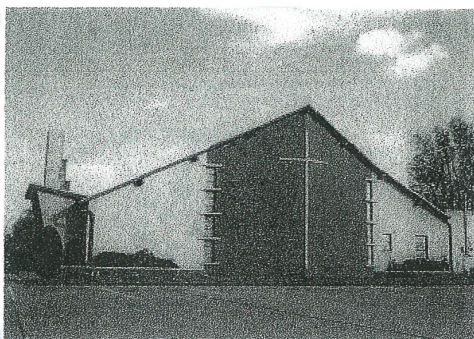
Forty sites around Wichita will serve free meals to children as part of the federally funded Summer Food Service Program. The program begins May 30 and runs through July 27 at most locations. Some sites will offer both breakfast and lunch; others will offer only one meal. Four will offer an afternoon snack. Adults can buy a meal for \$3.35. For further information, please check with the Neighborhood Assistant located at the Neighborhood City Hall for your area.

### LOCATIONS FOR NORTHWEST WICHITA

- ◆ Benton Elementary, 338 S. Woodchuck Lane
- ◆ Black Elementary, 1045 High
- ◆ Cloud Elementary, 1212 W. 25th St. North
- ◆ Dodge Elementary, 4801 W. Second St.
- ◆ First Church of the Brethren, 1103 N. Jefferson
- ◆ Franklin Elementary, 214 S. Elizabeth
- ◆ Inter-Faith Ministries, 902 N. Market
- ◆ L'Ouverture Elementary, 1539 Ohio
- ◆ Levy Special Education Center, 400 N. Woodchuck
- ◆ Park Elementary, 1025 N. Main
- ◆ Pleasant Valley Middle School, 2220 W. 29th St. North
- ◆ West Side Christian Church, 1819 W. Douglas
- ◆ Woodland Elementary, 1705 Salina
- ◆ YMCA Central Branch, 402 N. Market







**Douglas Avenue Assembly of God**  
**4501 W. Douglas Avenue**  
**Wichita, Ks.**  
**316-943-4193**

**Sunday School – 9:45AM**  
**Sunday Morning Service – 10:45AM**  
**Sunday Evening Service – 6:00PM**  
**Royal Rangers – Tuesday – 6:00PM**  
**Missionettes – Wednesday – 7:00PM**  
**Wednesday Evening Service – 7:00PM**

# Roenne's

Plowing □ Tilling □ Snow Removal  
 Light Dirt Work

## Seasonal

## Service



**Ron Roenne**  
**(316) 942-9615**



Quality rebuilt appliances and furniture for peanuts

### HELPFUL NUMBERS

Patrol West Substation at Elder & Central.  
 316/337-9487

#### DAV

262-7440  
 Contact for furniture pickup.

#### Salvation Army

263-4952  
 Contact for furniture pickup.

#### Goodwill

744-9291  
 Contact for furniture pickup.

#### His Helping Hands

838-8528  
 Contact for furniture pickup.

#### Household Hazardous Materials 801 Stillwell, Wichita KS 67213

660-7464; Take hazardous materials – at no cost. Call in advance for dropping off large amounts.

### ATTENTION COMMUNITY GARDNERS . . .

#### Land for Orchard Breeze Community Garden

Westar Energy has donated a portion of their land, just south of the Hoover Station, for neighbors residing within the Orchard Breeze Neighborhood Association boundaries, to garden. Westar has also donated use of water from their well.

#### Mark off your Garden Area:

Section off a spot on south side of mulch pile. Use your own fencing, posts, wood, rope or stones/rocks to section off area. Garden only in your spot. Do not trespass into another gardener's area. Meaning do not water, mulch, plant, weed, take tools and supplies, etc. in other gardener's areas. Harvest only from your spot. Do not trespass into other gardener's areas to take plants, crops, etc. Follow the golden rule—respect other gardeners as you want others to respect you, do unto others as you want others to do unto you. Thank you.

#### BYOG -- Bring your own GardenTools:

**Bring Your Own GardenTools and Supplies.** Each gardener is responsible for bringing their own tools and supplies, including garden hoses, rakes, shovels, wheelbarrow. OBNA is not responsible for any gardening tools and supplies left in the garden.

#### Mulch Pile:

Free mulch – the mulch is free for you to use in community garden. Use what you need.

For More Information, contact Loretta Buckner at 573-2008.