

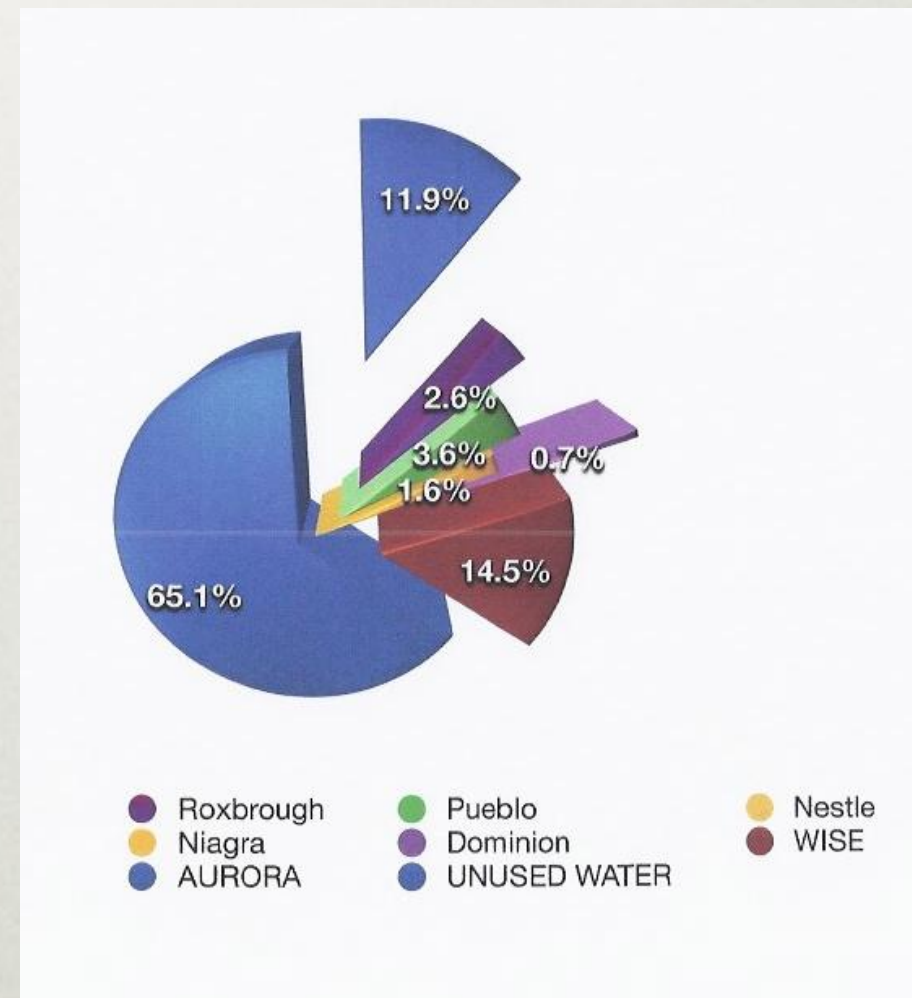


Laredo Highline
Neighborhood Association's
questions on WISE IGA

“A billion dollars here and a billion dollars
there and pretty
soon you are talking about real money”

President Reagan

- ☒ Roxbrough's water
- ☒ Pueblo's water
- ☒ Nestle's water
- ☒ Eagle County water
- ☒ Niagra's water
- ☒ Dominion's water
- ☐ WISE water



“Nibbled to death by ducks”

my, Grandmother



•

❑ Aurora's raw water wet yr. ----- 70,000

❑ Aurora's water Normal yr.----- 57,000

❑ Aurora's water use ----- 47,000

❑ water use plus sales ----- 58,000

In your heart do you believe that during a drought a Colorado court will let you stop delivery of Aurora's water to the WISE partners?

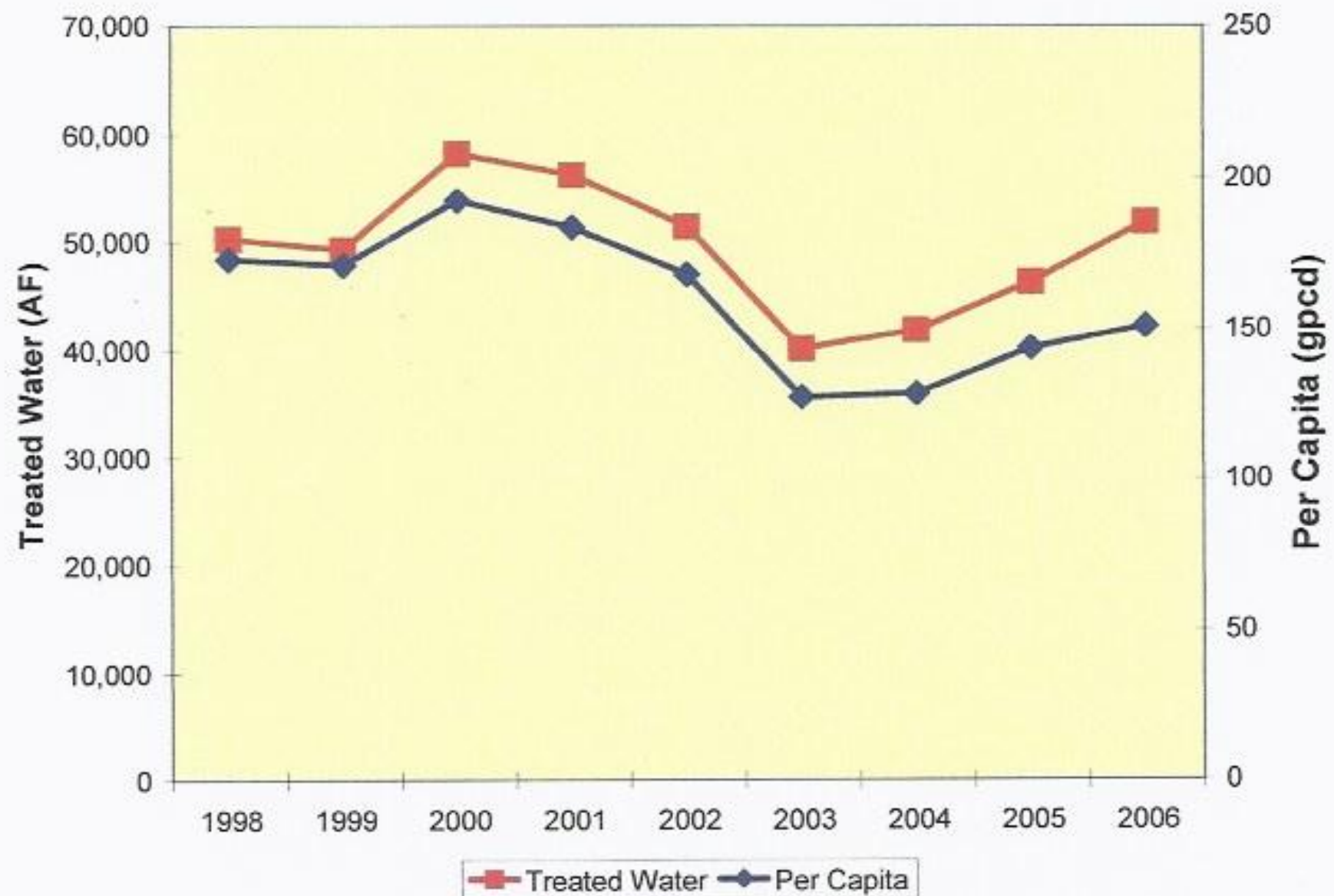


Figure 2: Treated water demand and per capita demand 1998 – 2006

Is it all just theater?



九万金

歌舞伎姿 一月 町長 鳴道夫
寿曾我村面五郎 留新味三郎