

Niu Valley Playground: We're Ready!





Agenda

- Background and history of park
- Project overview: Matt Graves
- Proposed Equipment: Mike McFarlane
- Community Participation: Jeannine Johnson
- Identification of next steps



History

- One of the only neighborhoods on Oahu without a playground.
- Over 7 years of planning and building community support.
- Brought before neighborhood board and received 4 resolutions of support.
- Letters of support from NVMS, Lyons, Scouts.



More than a playground: the missing heart of the community

- Activity area for 5-12 yr olds
- Activity stations for “over 12 yr olds”
- Seating areas at tables to encourage socializing with neighbors

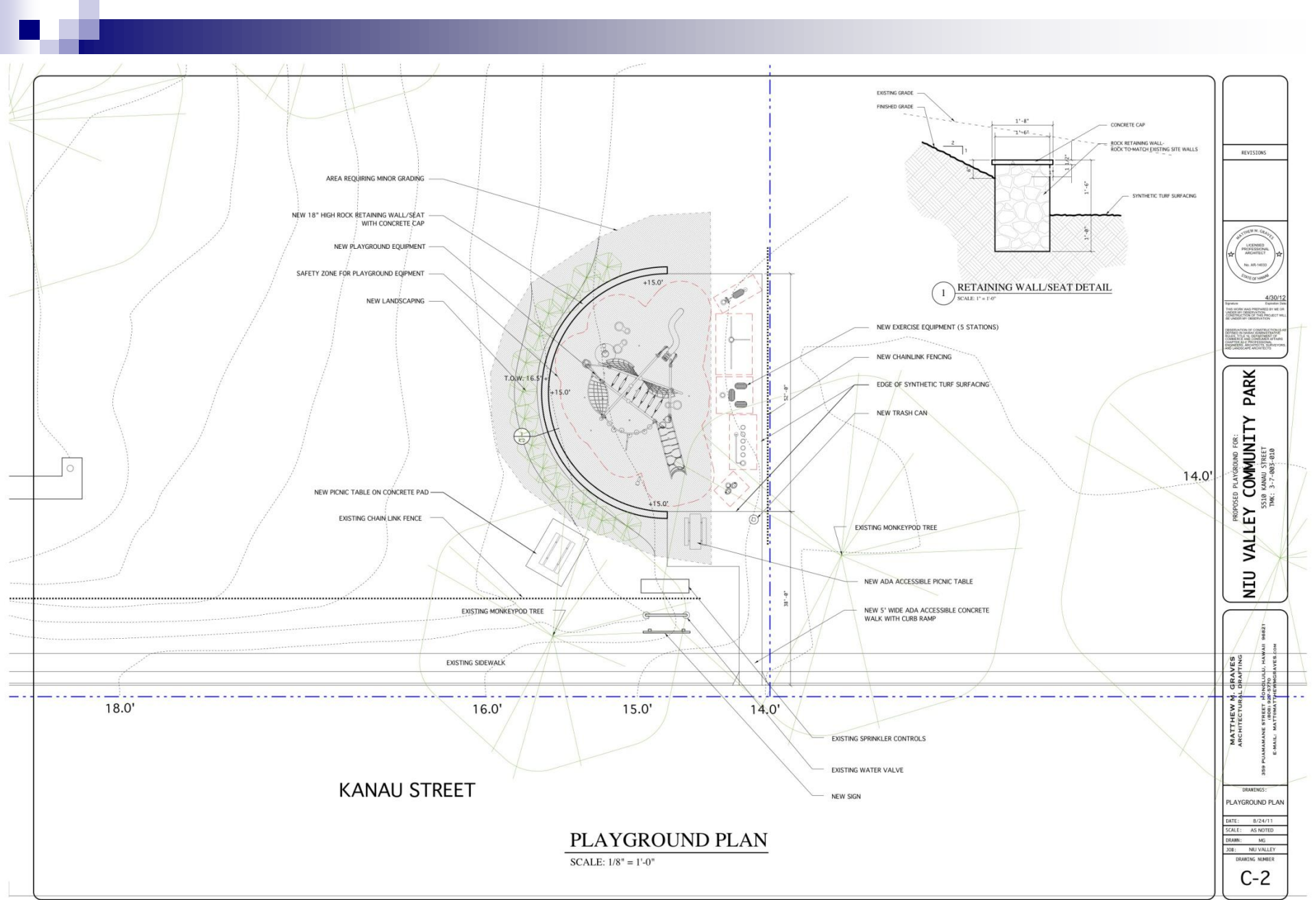


Project Overview

Matt Graves

Niu Valley Resident





PLAYGROUND PLAN

SCALE: 1/8" = 1'-0"

REVISIONS	
4/20/12	
PROJECT: NIU VALLEY COMMUNITY PARK	
LOCATION: 5510 KANAU STREET	
TIN: 3-7-003-000	
DRAWN: MG	
JOB: NIU VALLEY	
DRAWING NUMBER	
C-2	



Niu Valley Community Park Playground **Preliminary Budget**

	<u>Cost</u>	<u>Donation</u>	<u>Adjusted cost</u>
<u>Sitework</u>			
Excavation	\$6,000	\$6,000	\$0
Hauling and Disposal	\$3,000		\$3,000
Retaining wall	\$12,000		\$12,000
Concrete	\$30,000		\$30,000
<u>Equipment</u>			
Synthetic turf	\$32,000		\$32,000
Picnic tables	\$2,000		\$2,000
Trash can	\$500		\$500
Playground equipment	\$44,000		\$44,000
Exercise equipment	\$11,000		\$11,000
Shipping	\$11,000		\$11,000
installation	\$22,000	\$17,000	\$5,000
<u>Site Improvements</u>			
Fence	\$2,000		\$2,000
Landscaping	\$6,000	\$2,000	\$4,000
Irrigation	\$3,000		\$3,000
Sign	\$2,000	\$1,000	\$1,000
<u>Miscellaneous</u>			
Job site toilet, Dumpster, Supplies, Etc.	\$1,500		\$1,500
Total	\$188,000	\$26,000	\$162,000



Playground Equipment

Mike McFarlane
Island Recreation

5-12 yr old activity area

- Innovative Spherical Design
- CPSC, ASTM, ADA compliant
- Can be integrated into Nui Valley Middle School PE curriculum.
- Kids love it!

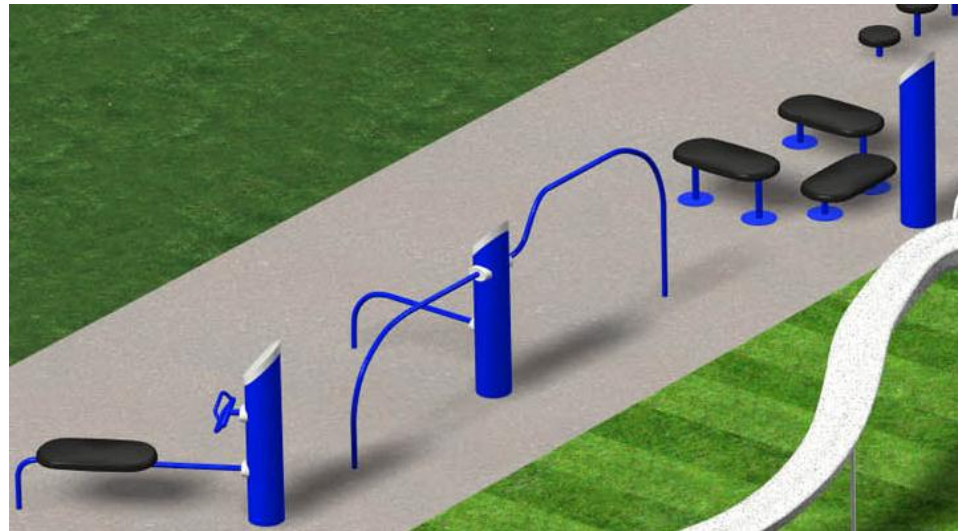


Undirected vs. Directed Play



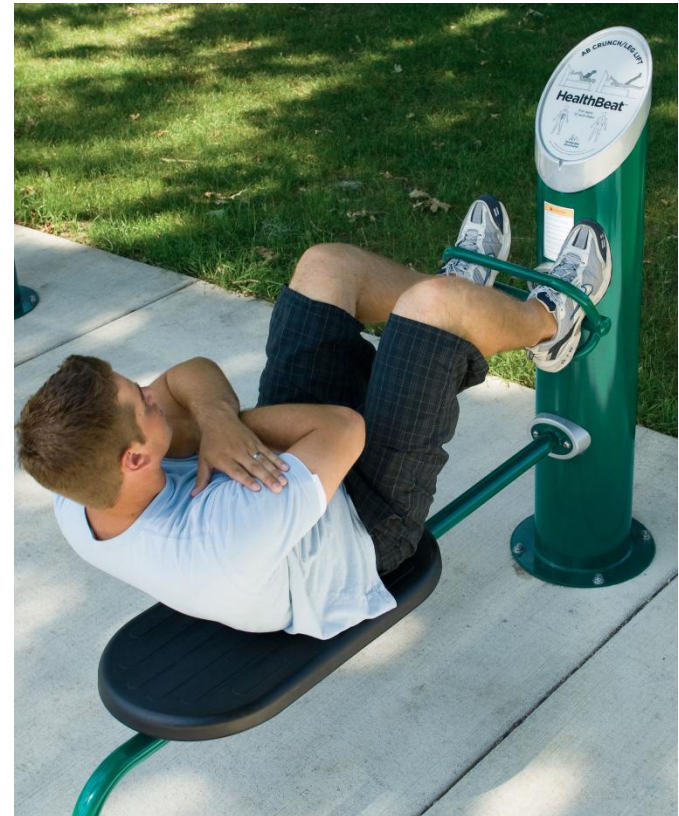
Exercise Stations

- Teens to Seniors
- Orientated toward play area.
- Open Sight Lines
- Inclusive design provides activity for all ages.



HealthBeat

- Ergonomic Design
- Puts users in correct position



Multi-Use Events



Tri-Dips, Inverted Push Ups,
Inclined Push Ups, Pull Ups,
Assisted Row,



Pull Ups

Seating Areas

- Sight lines open
- Natural Shade
- Creates a Gathering Place
- 18" Retaining Wall provides ample seating for close supervision.



Quality and Durability



Polyester-wrapped, six-stranded galvanized-steel cable.



Connectors have been tested to a minimum weight of 3,500 pounds each.



Two-piece cast-aluminum ball connectors house an innovative and versatile ball-and-socket clamping system

Jeannine Johnson
Niu Valley Community Association

COMMUNITY



Closest Parks

- Aina Haina Park
1.2 miles.
- Kuliouou Park
2.2 miles.
- 2.4 and 4.4
roundtrip walks
from community




Stroller Path?



More than a playground...

- Center of community gravity.
- Strengthens neighbor bonds.
- Something for all age groups.
- Promotes Healthy Lifestyle





Support & Coalitions

- HMSA Foundation Grant.
- Special funding (discounts) from manufacturer.
- City to provide land.
- Community to build playground.
- Support from Niu Valley Intermediate.
- Community Surveys and NB resolutions.



Niu Valley Playground Coalition

- Subgroup of Niu Valley Community Association
- Planning playground since September 2007.
- Garnering input, creating preliminary plans, and coordinating stakeholder interest.



Closing



Addresses Community Concerns:

- Playground consensus gained via an open planning process.
- Unanimous support of Neighborhood Board on numerous resolutions.
- Leverages sidewalk proximity for ADA compliance.
- Solves community rejection of comfort stations.



So Far...

- ✓ Extensive community input and support.
- ✓ Preliminary design
- ✓ Equipment
- ✓ Community involvement and fundraising
- ✓ It's in the Budget
- ✓ ...



What steps do we take
from here to build?



Contacts:

- Peter Kay: peter@cybercominc.com
- Matt Graves: matt@matthewmgraves.com,
- Mike McFarlane: mike@islandrecreation.net
- Jeannine Johnson: jeannine@hawaii.rr.com



References

- Letters and surveys
- Original city plans

Construction Site



Playground



Existing Baseball Backstop







Kuliouou Park Street Access



Kuliouou Park Street Access



