



Resource Management & Implementation Plan for Fossil Creek Reservoir Regional Open Space

Planning Context

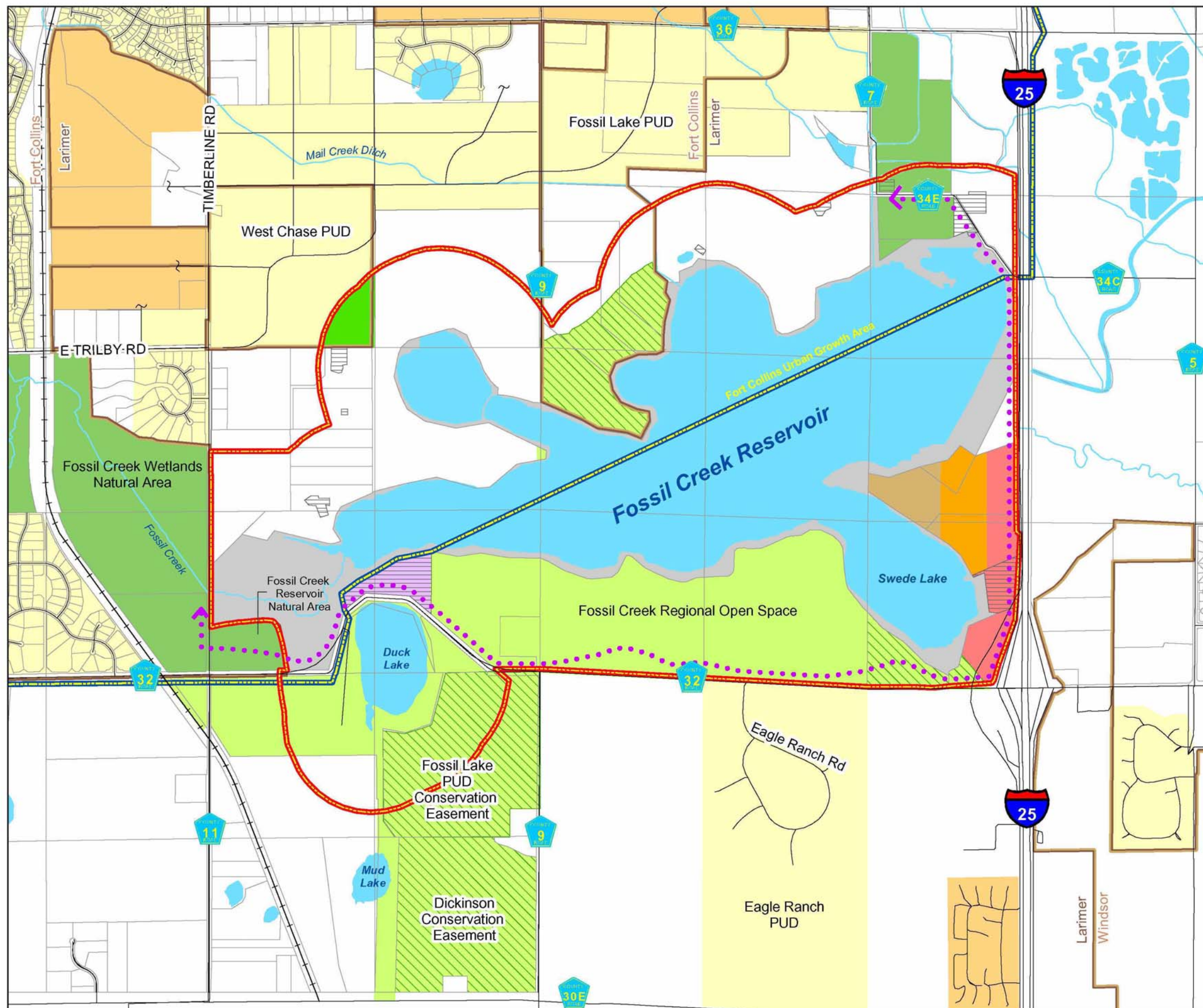
Legend

- Resource Management Area (Fossil Creek Reservoir Area Plan, 1998)
- Larimer County Open Space
- City of Fort Collins Natural Area
- Other Dedicated Open Space
- Conservation Easement
- Existing Development
- Ownership Parcels
- North Poudre Irrigation Company
- Estate Residential/Agricultural
- Low Density Mixed Use (3 DU/AC)
- Low Density Mixed Use (5 DU/AC)
- Multi-Family
- Residential (Larimer)
- Commercial
- Industrial
- Regional Trail

Map 2.1



EDAW
April 2003





Resource Management & Implementation Plan for Fossil Creek Reservoir Regional Open Space

Environmental Resources

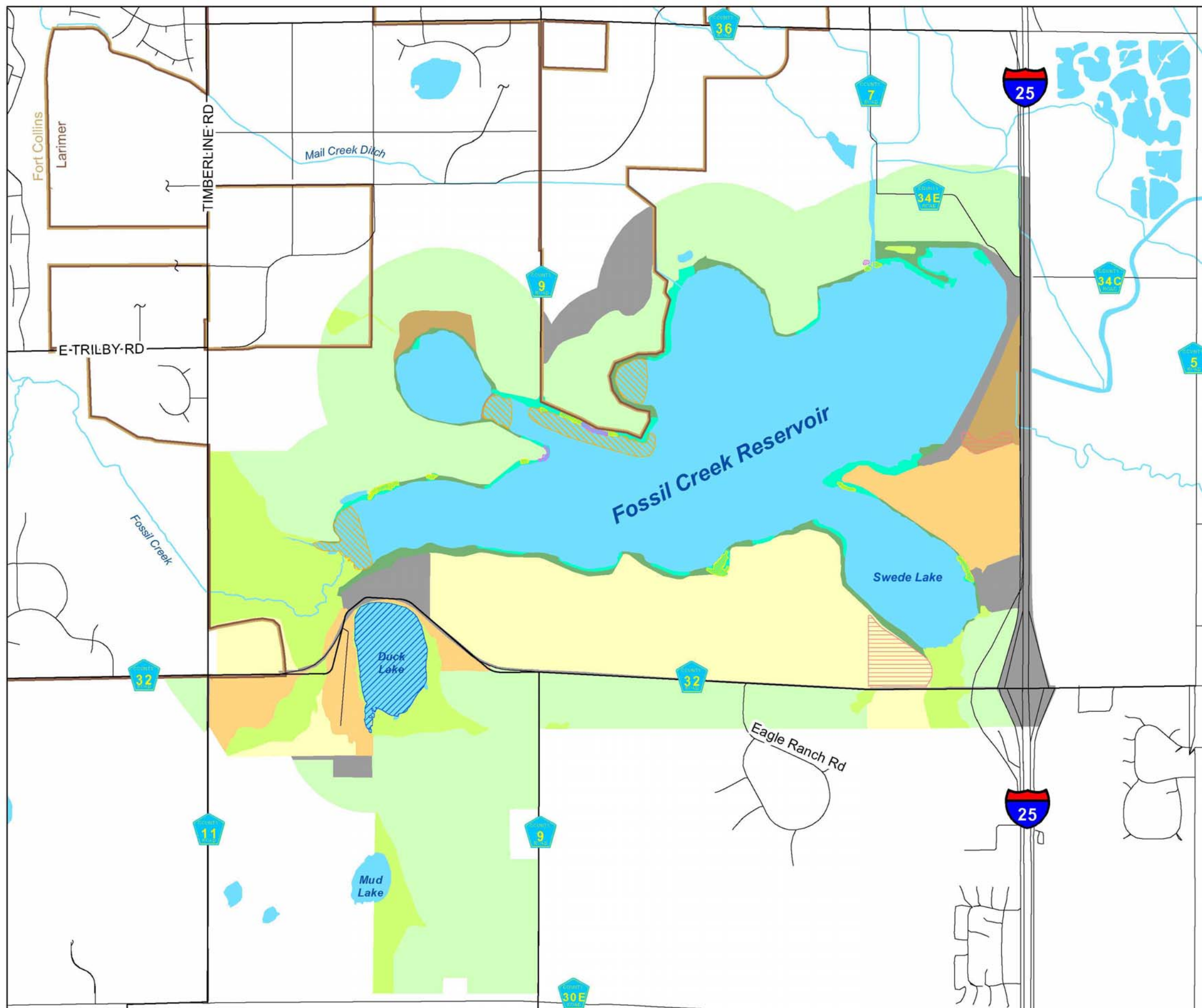
Legend

Habitat

- Eagle Winter Night Roost
- Heron Rookery
- High Migratory Waterfowl Use
- High White Pelcon Use
- Prairie Dog Colony

Vegetation

- Agriculture
- Agriculture (Fallow)
- Seeded Pasture
- Grassland (mixture of native and introduced grasses, forbs, and shrubs)
- Eagle Winter Night Roost
- Eagle Winter Night Roost
- Wetland
- Open Water
- Developed



Map 2.2



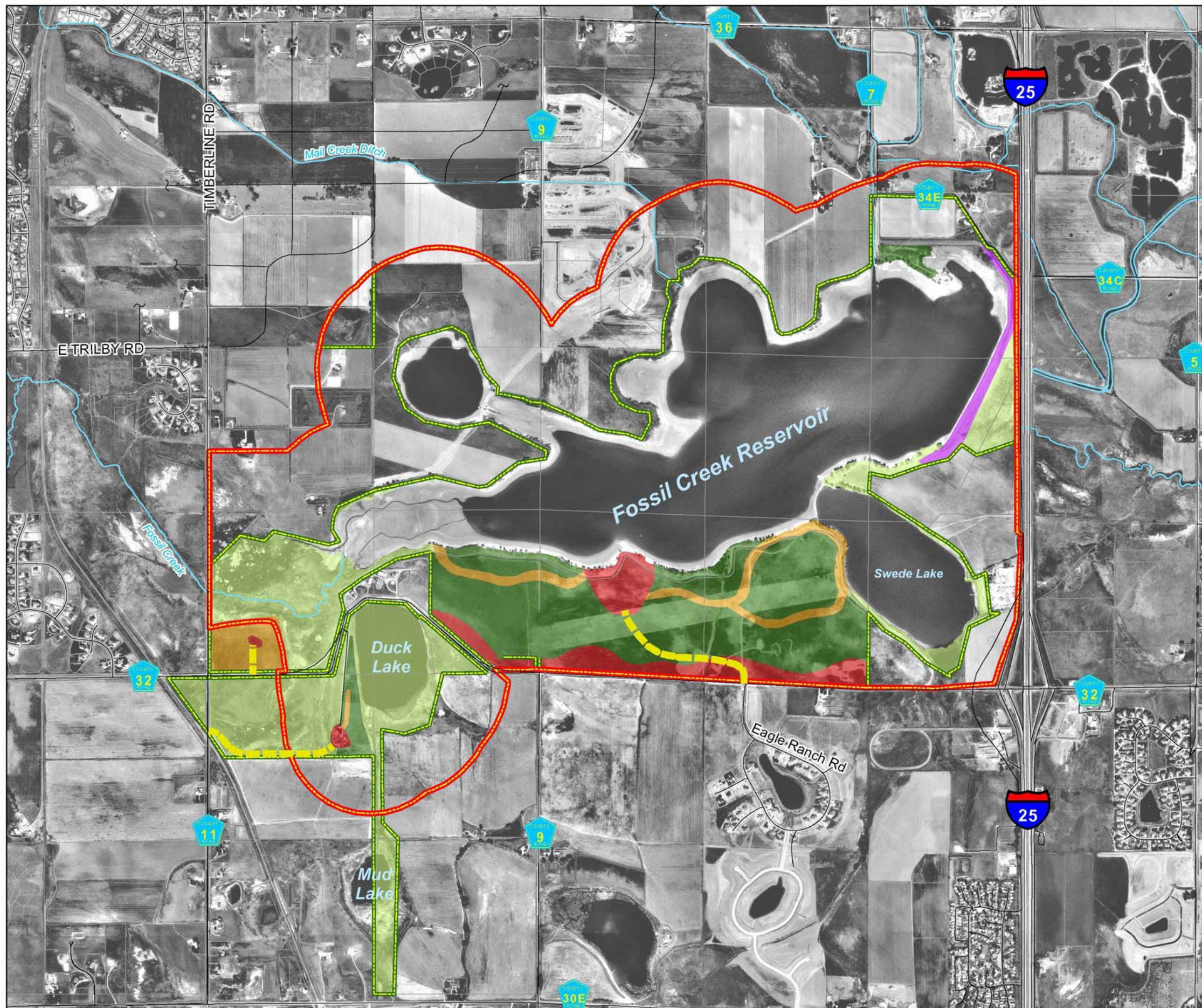


Resource Management & Implementation Plan for Fossil Creek Reservoir Regional Open Space

Management Areas

Legend

- High Use Area
- Moderate Use Area
- Reservoir Operations Area
- Resource Protection Area
- Restoration Area
- Ownership Parcels
- Resource Management Area (Fossil Creek Reservoir Area Plan, 1998)
- Property Boundary
- Entry Road



Map 3.1



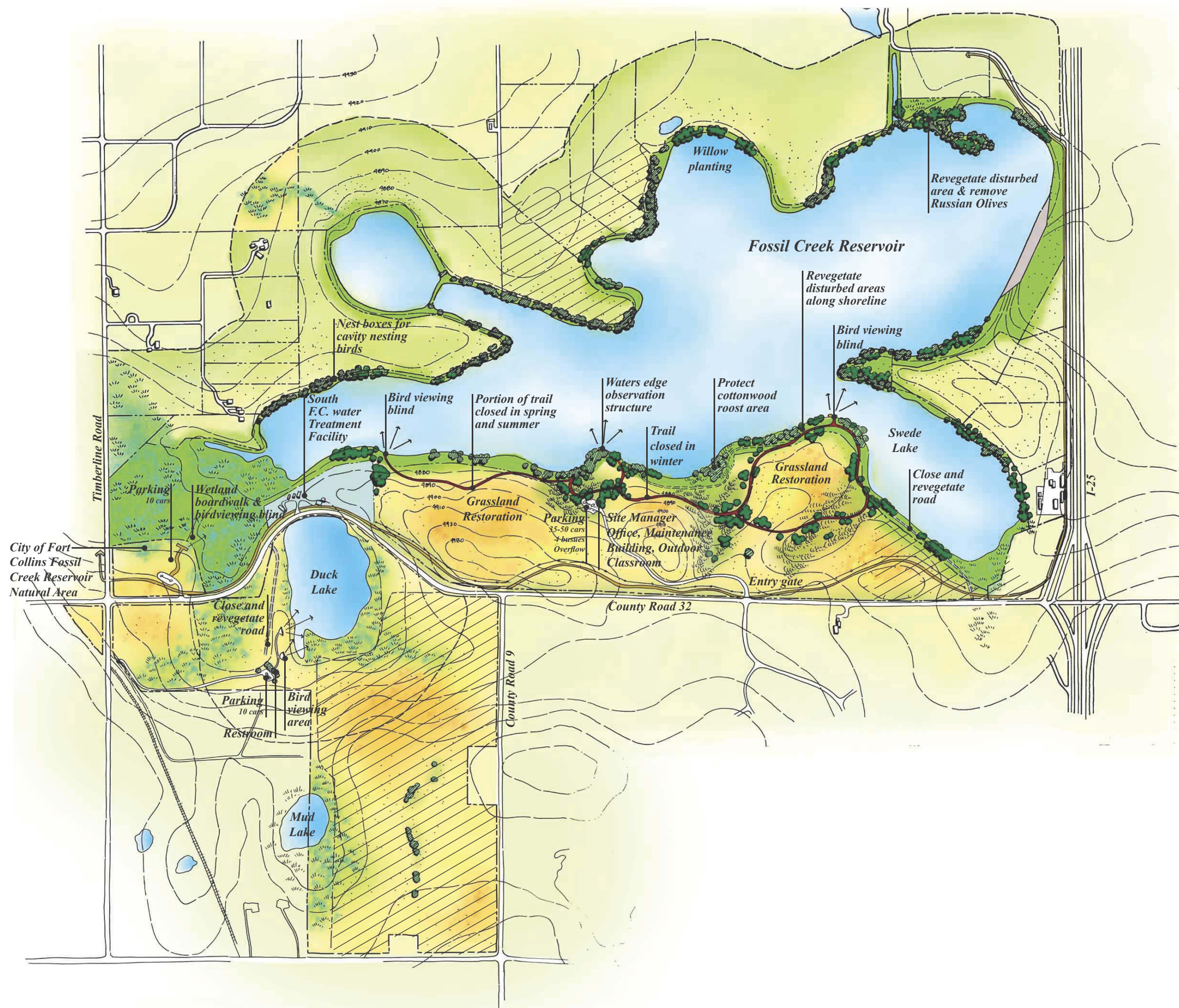


Resource Management & Implementation Plan for Fossil Creek Reservoir Regional Open Space

Master Plan

Legend

- Property Line
- Primary Use Area Trail
- Regional Trail
- Contour - 10' Interval
- Parking Area
- Wetland
- Shrubs
- Proposed Trees
- Existing Trees
- Fence
- Resource Management Area
- Conservation Easement



Map 3.2

0 500' 1000' 2000'

EDAW
April 2003

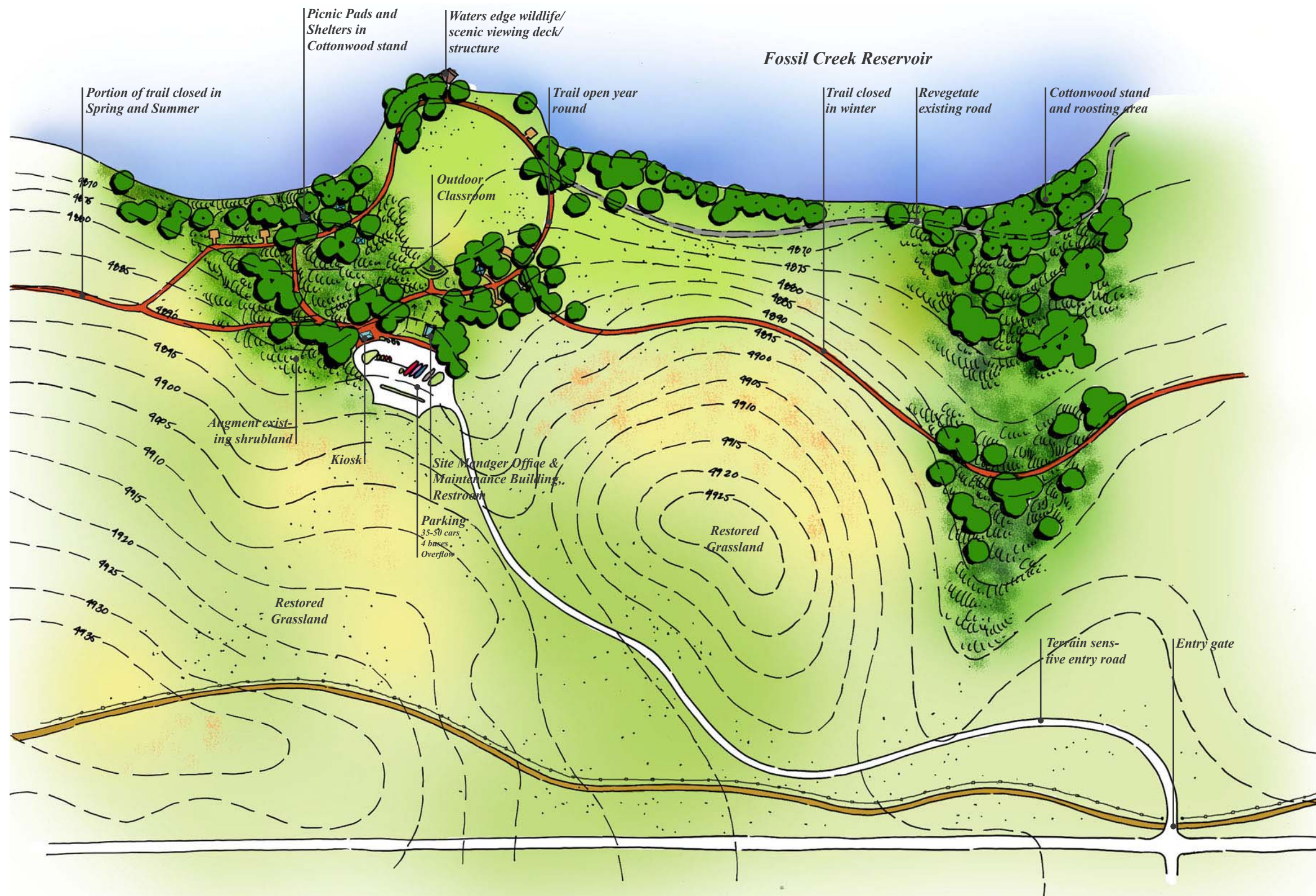


Resource Management & Implementation Plan for Fossil Creek Reservoir Regional Open Space

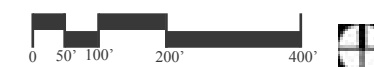
Primary Use Area

Legend

- Park Preserve Trail on Existing Perimeter Road
- Park Preserve Trail
- Existing Perimeter Road - Revegetate
- Regional Trail
- Contour - 5' Interval
- Proposed Trees
- Existing Trees
- Fence



Map 3.3





Resource Management &
Implementation Plan for
Fossil Creek Reservoir
Regional Open Space

View of Observation Structure

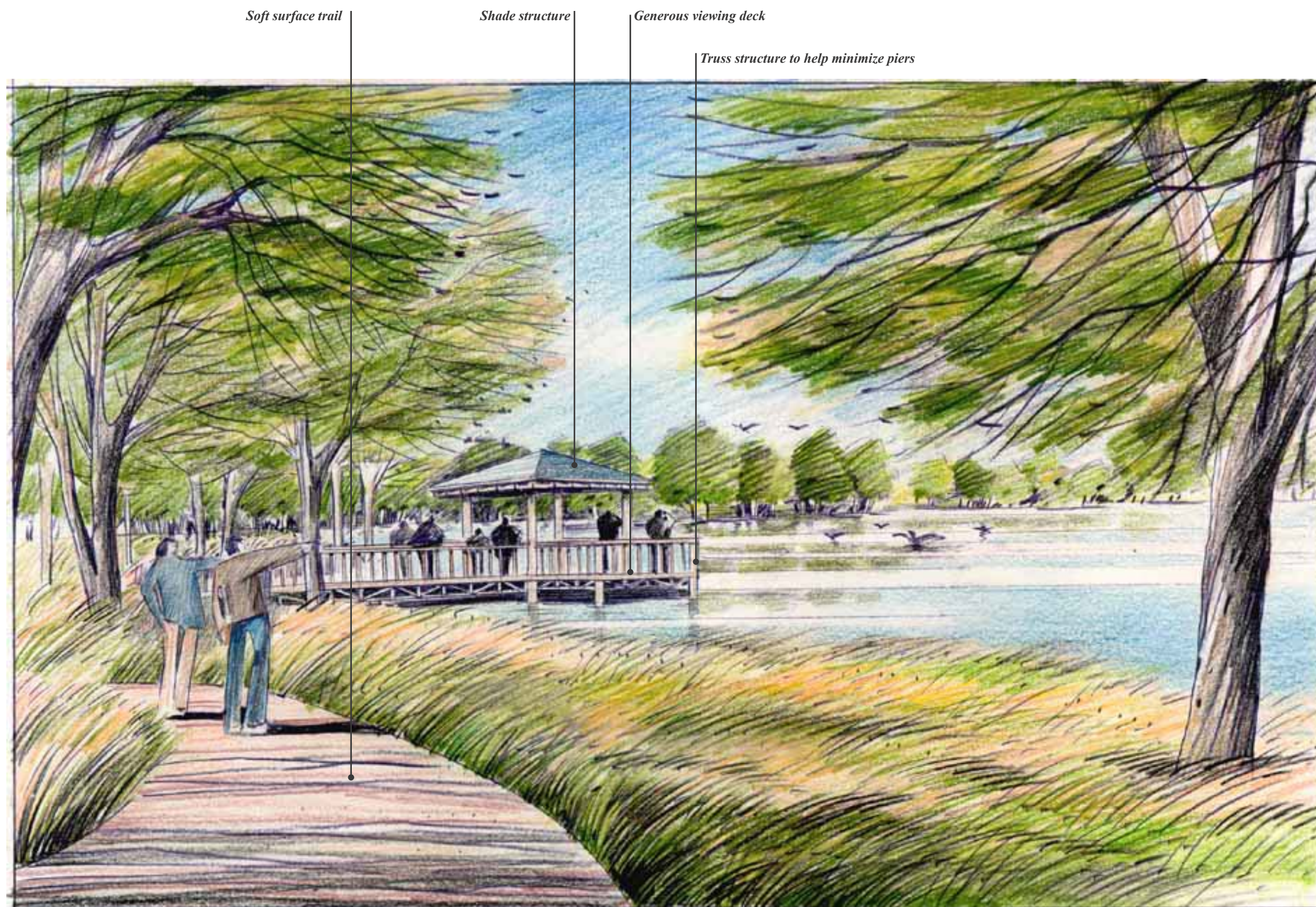


Fig. 3.1



Resource Management &
Implementation Plan for
Fossil Creek Reservoir
Regional Open Space

View of Bird Viewing Blind

Structure set in Cottonwood Stand

Diagonal Viewing Area Allows for Range of Viewers Heights



Fig. 3.2