

# Barriers To Access

## Perkerson Community – Southwest Atlanta

### A Community Surrounded By The Freeway System

(A Community Seeking Environmental Justice – A View From Pictures)

Welcome to our neighborhood where you have access to all community resources if you live on the other side of the expressway. If you're one of our seniors who can't drive, then you have to use MARTA buses (bus #95 on Metropolitan Parkway or bus #193 Sylvan Hills to East Point).

You can use the pedestrian bridge to cross the expressway (Highway 166 East/West) if you can climb 20 steps up to walk across and 20 steps down from the pedestrian bridge.

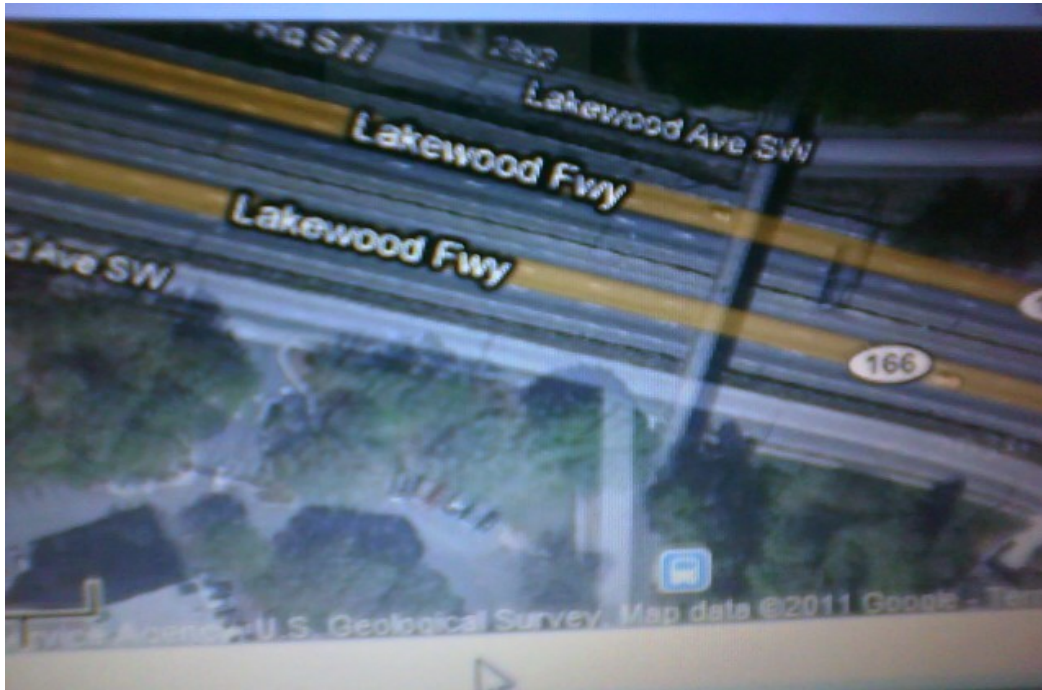
If you're a wheelchair user, oh well...that's a \$3.60 trip each way.

Of course, some just decide to walk across the expressway and climb across the barrier.

Even the children know that...dodge the traffic...so I can get to the library.



Doug Kerr / January 12, 2008



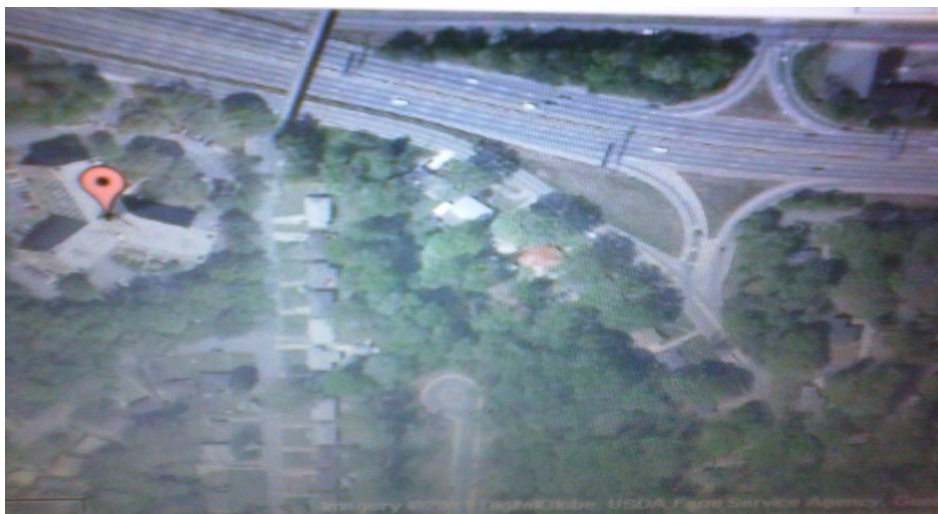
The shadow line going across the expressway is the pedestrian bridge over Highway 166 East/West.

It's located at Springdale Road/Perkerson Road/Lakewood Avenue intersection...across the street from Lakewood Christian Manor Retirement Community.

Trinity Towers, another senior retirement community, is on the other end of Springdale Road.

Altogether, we have over 500 units of senior apartment complexes in the Perkerson Community.

When you follow Springdale Road across Cleveland Avenue, then you get to Crestview Nursing Home, rehab homes, etc.





Doug Kerr / January 12, 2008



John Krakoff / March 27, 2007





John Krakoff / March 12, 2007

As you can tell,  
we have great transportation access in Perkerson with all the freeway systems surrounding us.

### **Connecting Street To Communities: Metropolitan Parkway**

Adair Park, Capitol View, Capitol View Manor, Sylvan Hills, Perkerson, Hammond Park

### **Transit System Access:**

#### **MARTA Bus #95 / Metropolitan Parkway**

(Bus Comes From West End Train Station & Straight Down Metropolitan Parkway)

#### **MARTA Bus #193 / Sylvan Hills**

(Bus Comes From Oakland City Train Station & Pass Murphy Triangle To Sylvan Road To Springdale Road To Cleveland Avenue Through Jefferson Park & On To East Point Train Station)

#### **MARTA Bus #172 / Virginia Avenue**

(Bus Comes From Lakewood Train Station & To Sylvan Road To Cleveland Avenue & To Virginia Avenue)