

Council Agenda Item-333

2008 TransNet Local Street and Road Program
City-wide



Euclid Avenue Corridor Improvements

MPOID: SD134, NCI-**RTIP#08-00 (CIP52-743,0)**



Euclid Avenue Needs a Traffic Capacity Study

- The new I-15 Freeway has **NOT** stopped the **HORRIFIC** accidents, high rate of **SPEED** and traffic **SNARLS** on Euclid, and the Avenue is **NEVER** relatively quiet.
- Is a **fact**: Euclid now carries **MORE TRAFFIC** than it was built to carry.
- And as a matter of fact: Euclid was dedicated in 1911 to carry **MILK-WAGON TRAINS** and **FORD MODEL "T's"** in both directions.

*Some Say: “There is **NO** problems with Euclid Avenue”.*



NARRAWING *of the* *Avenue*





*With this traffic snarl up-hill
there's **NO** Bike Lane*



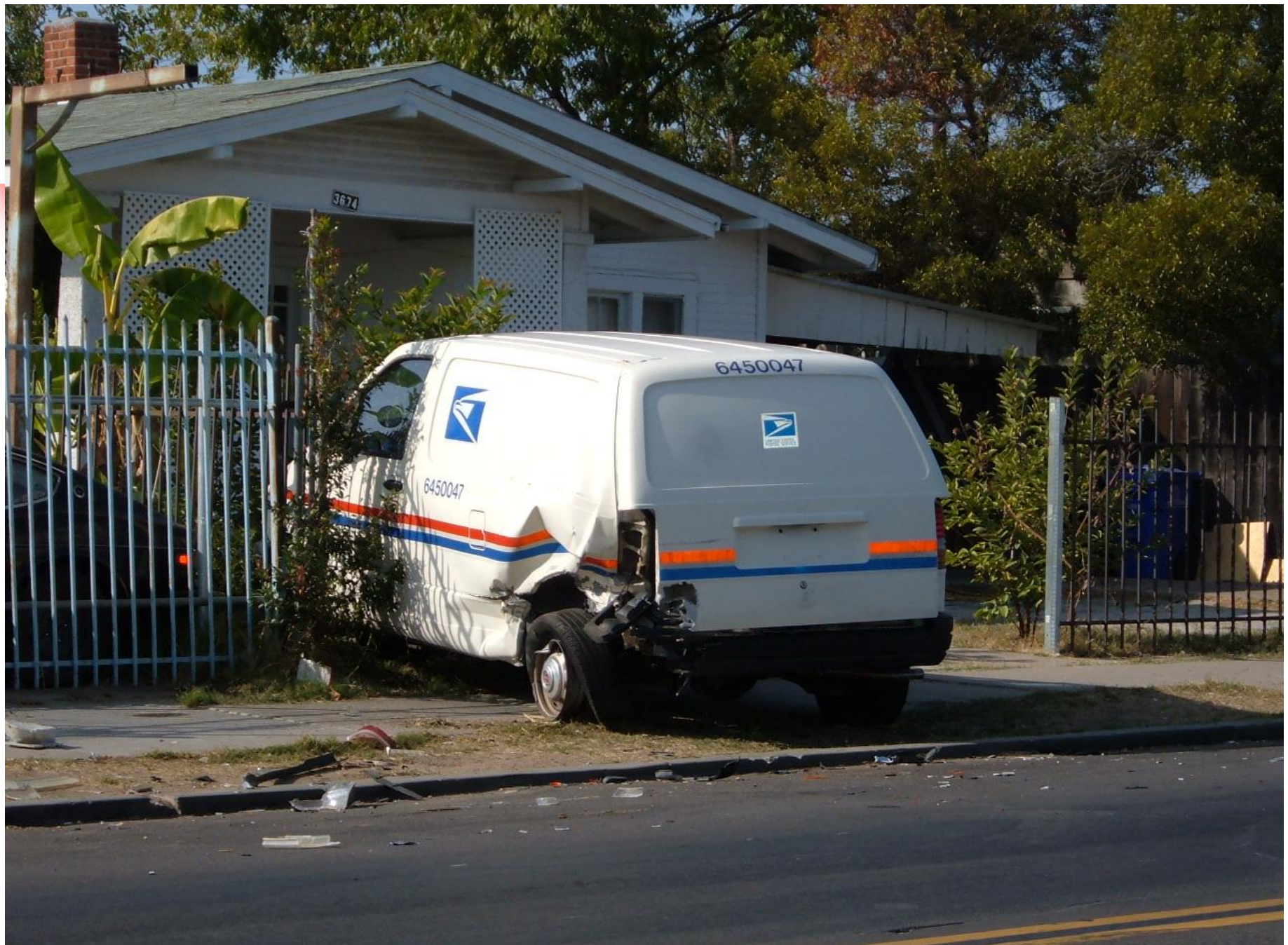




*Some say: "There are **NO** accidents on Euclid Avenue."*









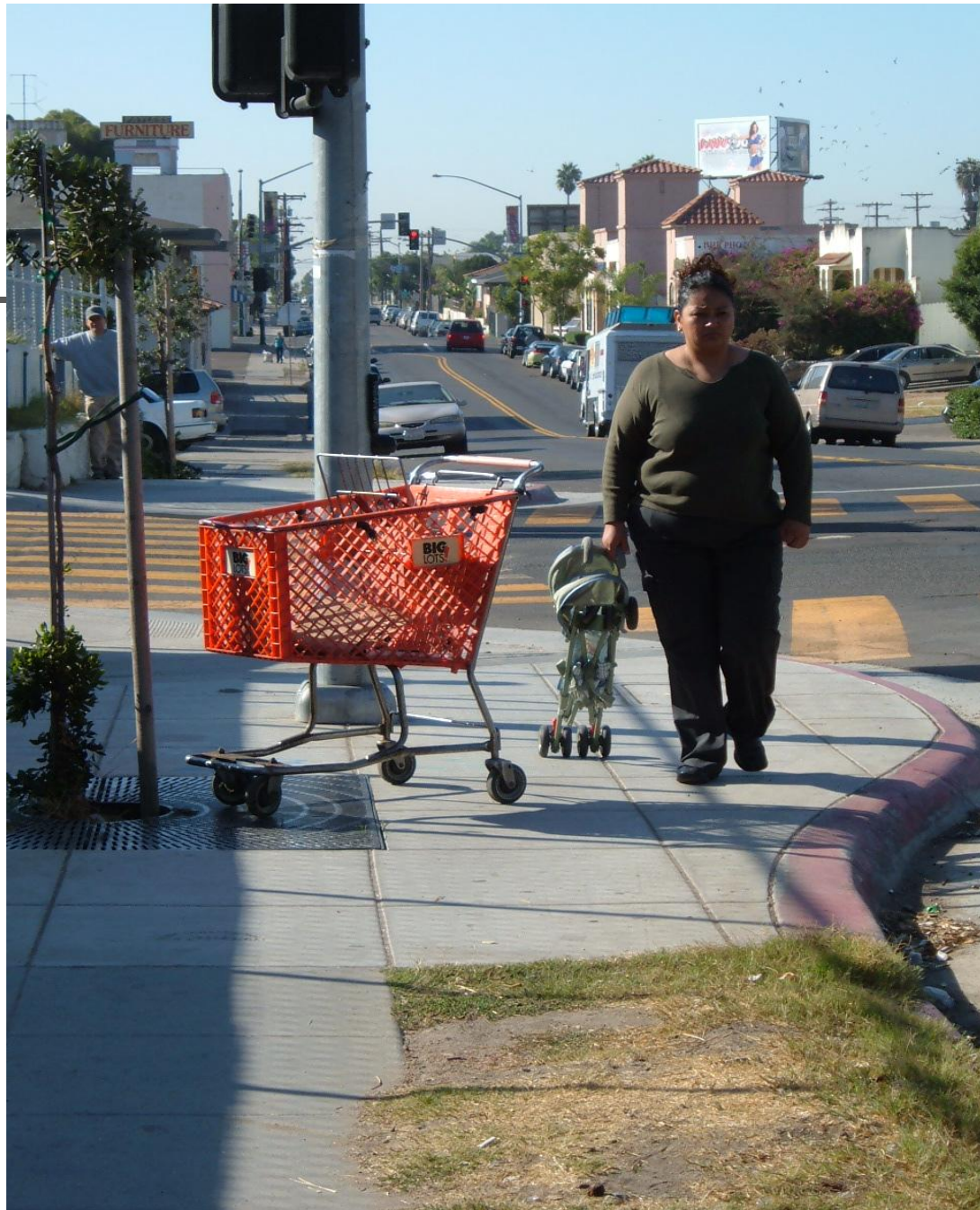
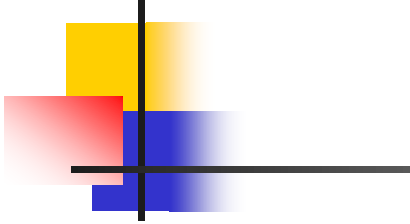




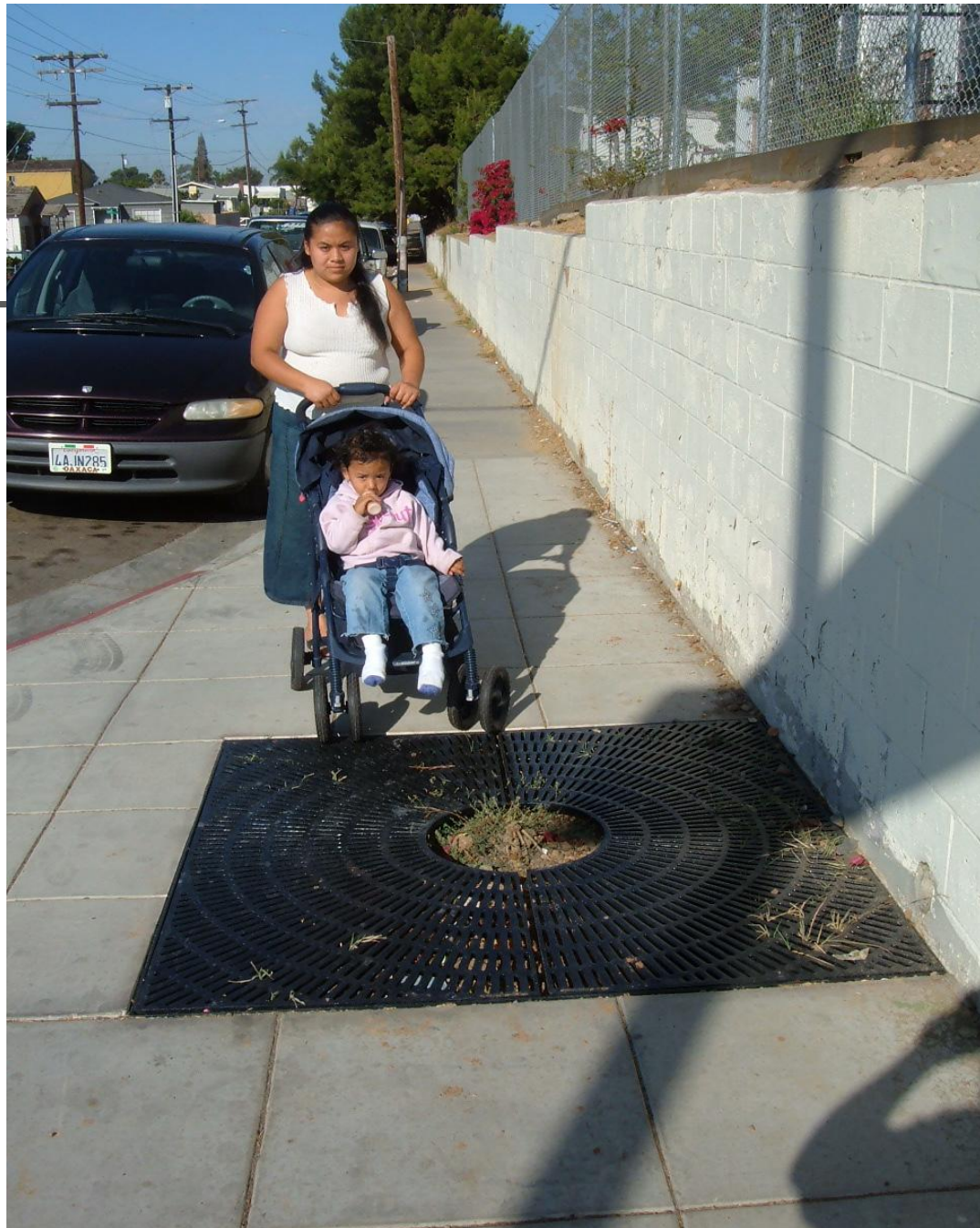
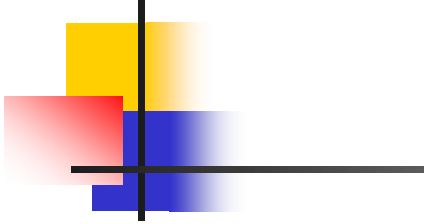


Pedestrian Safety?









*Some say: “There is **NO ADA**
issues with Euclid Avenue”.*













*Some say: “There’s **NO** jumping
the curbs on Euclid Avenue”.*





Sidewalks, curbs and gutters?







