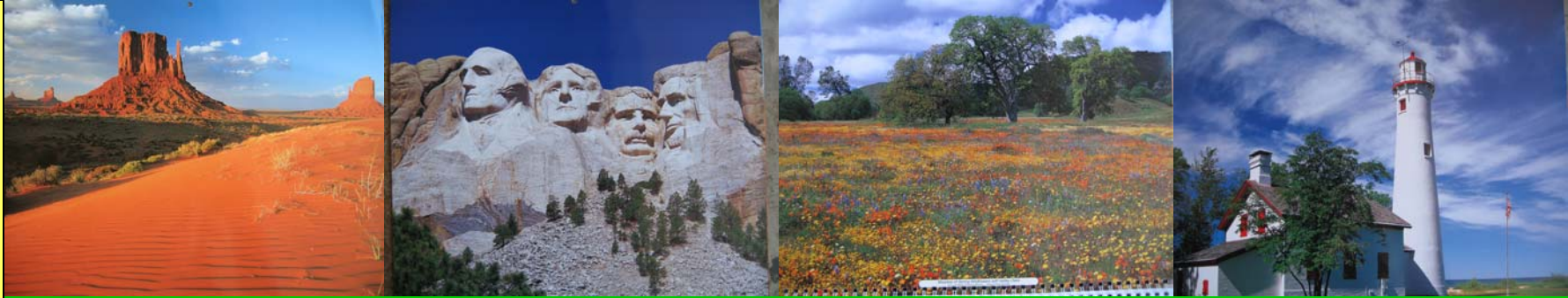


Rural Training Center – Thailand (RTC-TH)

REEEPP FOCUS

An innovative, non-traditional community-based environmental education program integrating math, science, geography, English language, and technology lessons for environmental stewardship using interactive experiential learning in outdoor settings at Ban Na Fa Elementary School, Nan Province, Thailand.



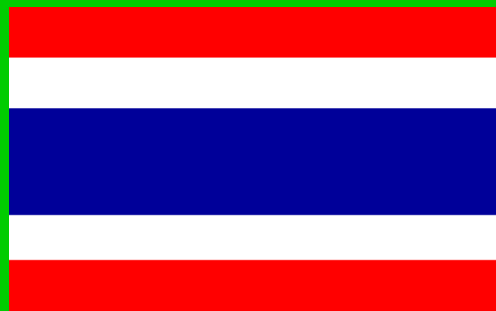


Geography



© 2007, G.K Lee & S. Lee

Created by G.K. Lee for the RTC-TH REEEPP



This is an English Language Training module of **REEEPP**

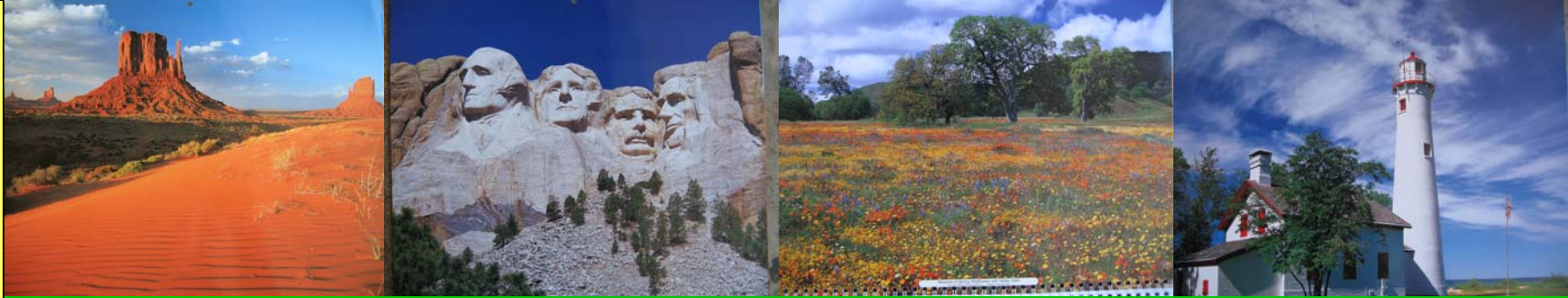
Rural Environmental Education Enhancement Pilot Program
presented by
The Rural Training Center-Thailand



© 2007, G.K Lee & S. Lee

E-mail: rtc2k5@gmail.com

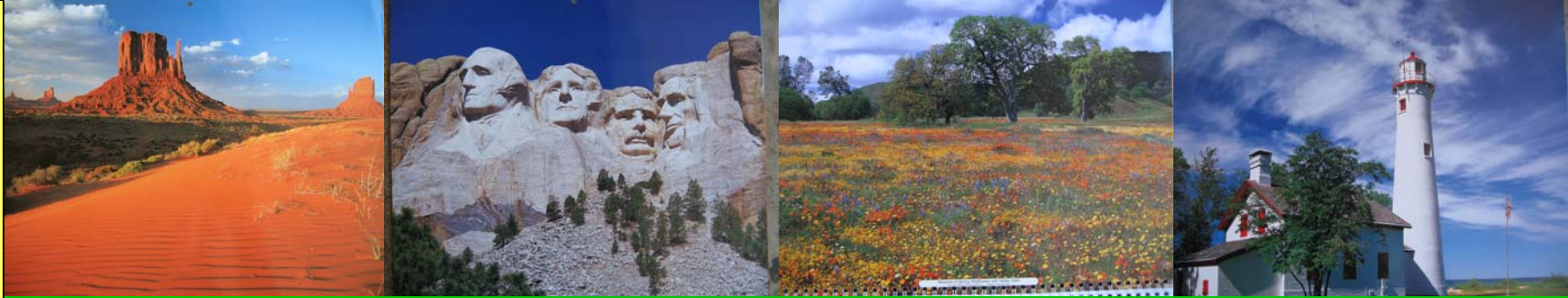
www.neighborhoodlink.com/org/rtct



**Geography is the study of
different places.**



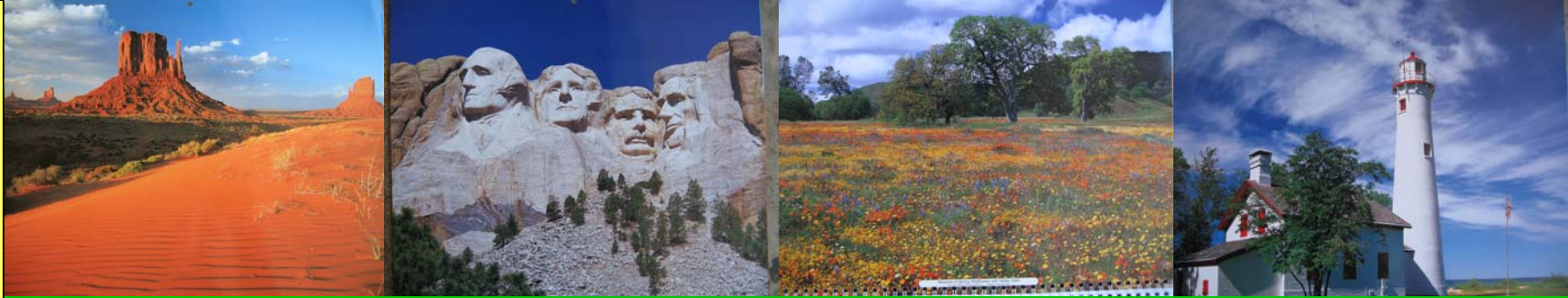
© 2007, G.K Lee & S. Lee



You can know something about a place by looking carefully at the land and plants.



© 2007, G.K Lee & S. Lee

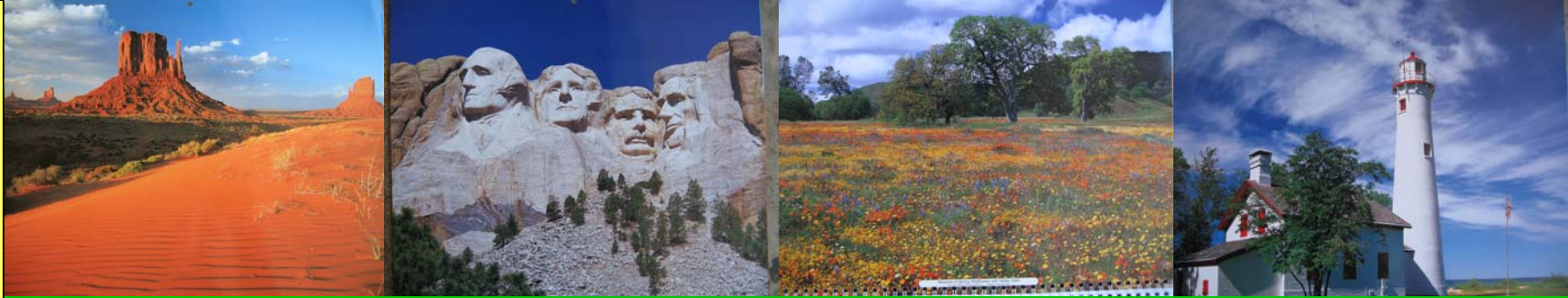


Some of the places are natural.



© 2007, G.K Lee & S. Lee

A “natural” place has very few or no people living there.



Some of the places are built-up.



© 2007, G.K Lee & S. Lee

“Built-up” means there are people and buildings present.

This is an arid landscape.



© 2007, G.K Lee & S. Lee

Arid means dry.



Landscape means you are looking at large piece of land.



Some people call this a desert.



A desert is a place that has no plants. Do you see any plants growing here?



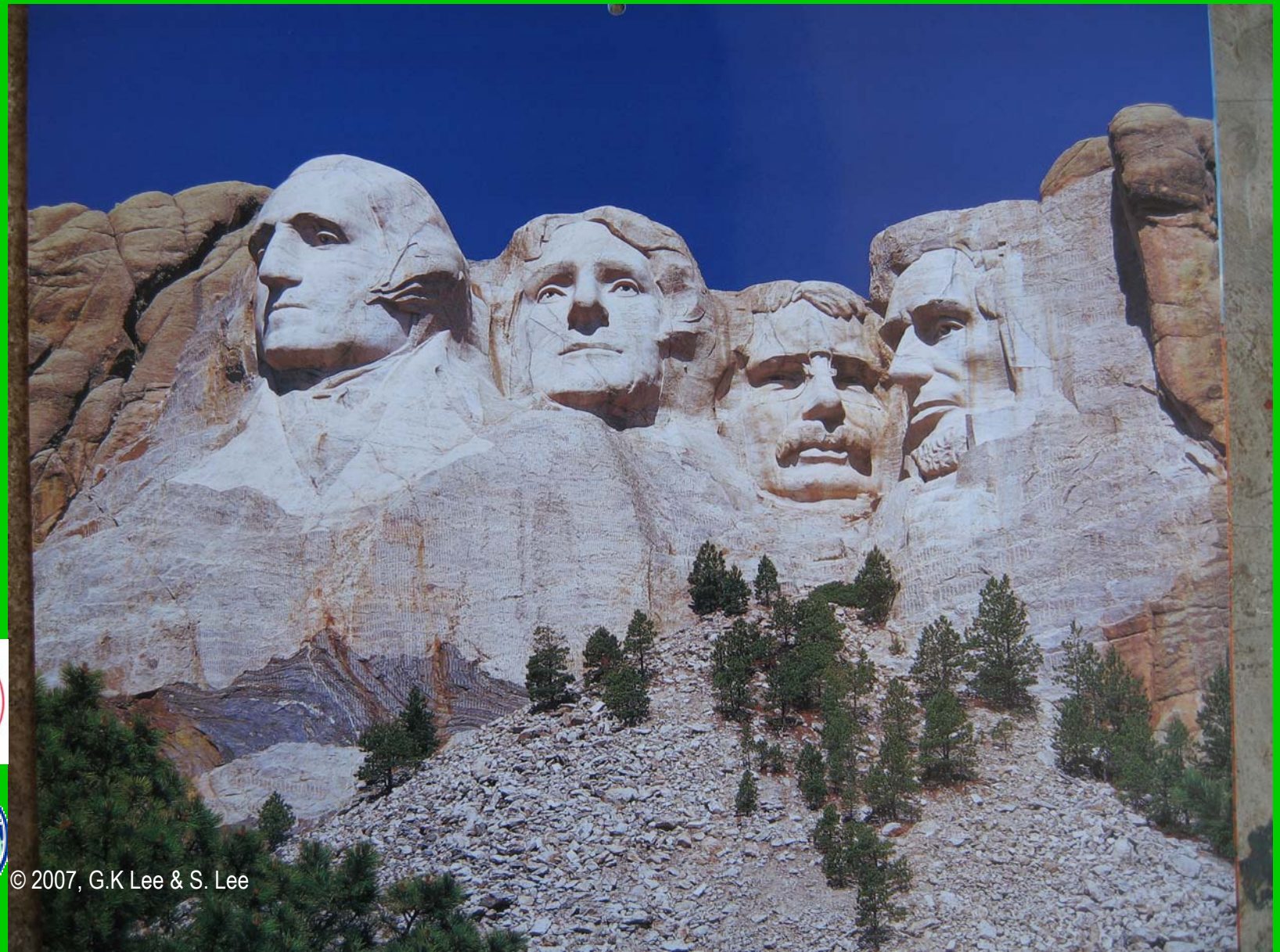
Some arid places are deserts.



Yes, there are plants growing here. So scientists say this is an arid landscape.



This is a U.S. National Monument.



© 2007, G.K Lee & S. Lee

A monument is made so people can remember something important.



This American national monument is called Mount Rushmore. It is located in the state of South Dakota.

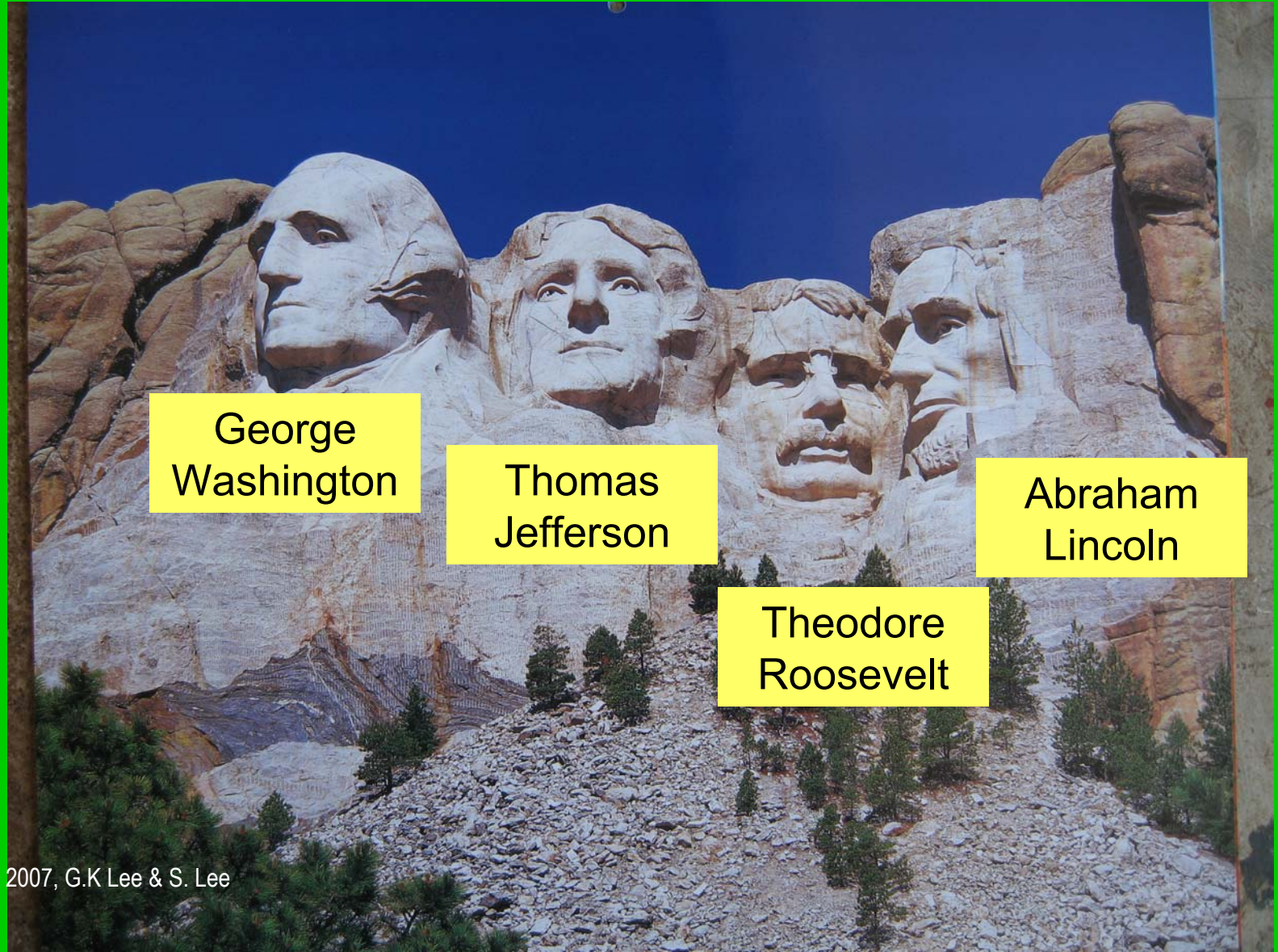


Look at the faces carved in the mountain. Do you know who they are?



© 2007, G.K Lee & S. Lee

They are famous American presidents.



George
Washington

Thomas
Jefferson

Abraham
Lincoln

Theodore
Roosevelt



This is an open field.



© 2007, G.K Lee & S. Lee

Meadow of Spring Wildflowers with Valley Oaks
San Luis Obispo County, California
Photo: G. K. Lee & S. Lee

A field is a flat piece of land.



An open field means there are few trees to block your view.



© 2007, G.K Lee & S. Lee

Meadow of Spring Wildflowers with Valley Oaks
San Luis Obispo County, California
Photo © Barry Scheraga

This open field is covered with wild flowers.



Wild flowers means no one planted the flowers here.



© 2007, G.K Lee & S. Lee

Meadow of Spring Wildflowers with Valley Oaks
See Life Science Country Collection Photo & Video Journals

This is a lighthouse.



© 2007, G.K Lee & S. Lee

A lighthouse has a big light at the top of a tower.

A tower can be a tall, thin building.



© 2007, G.K Lee & S. Lee

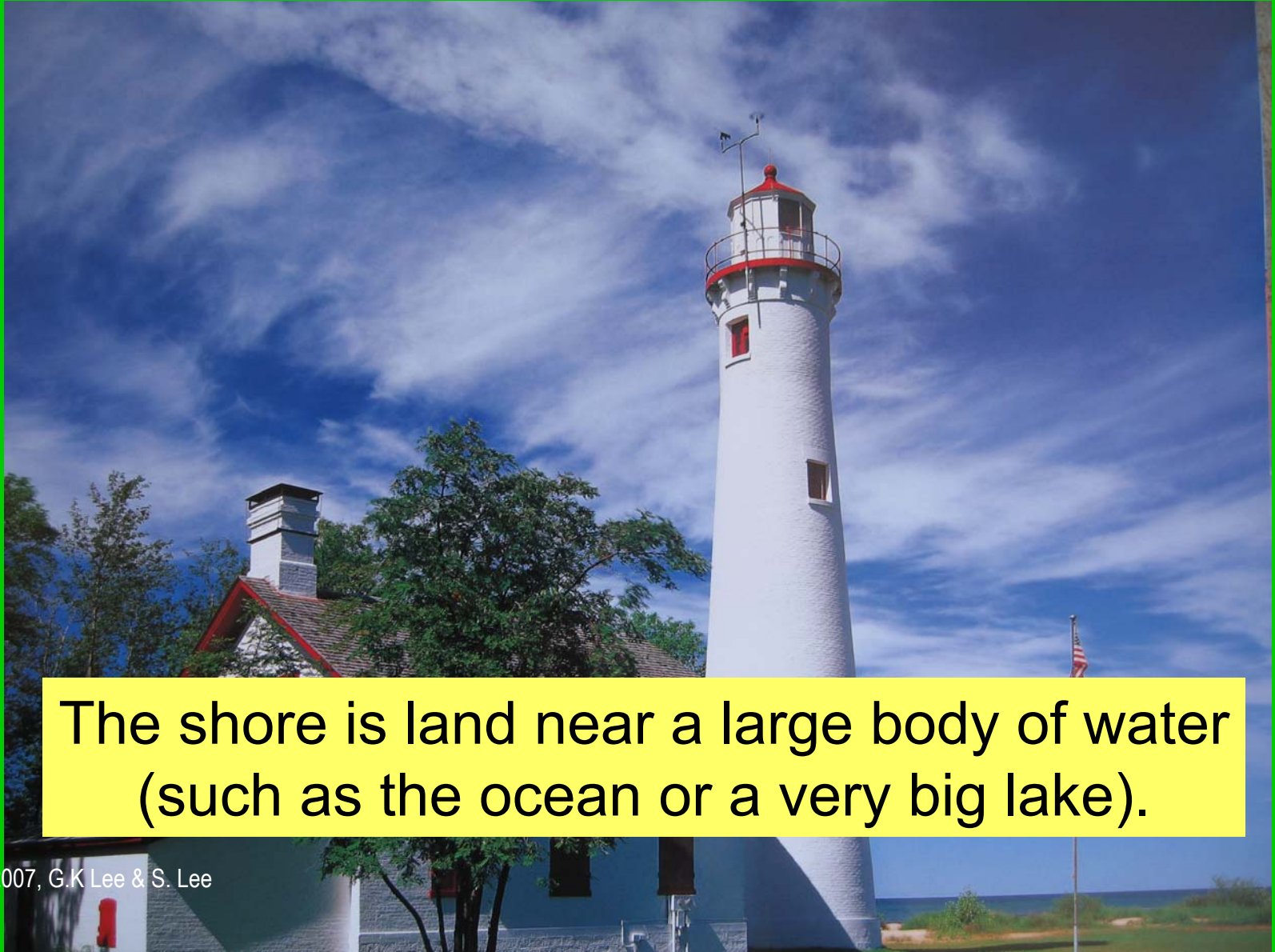
The worker in a lighthouse is called a lighthouse keeper.

The lighthouse keeper lives in the house next to the tower.



© 2007, G.K Lee & S. Lee

A lighthouse is found near the shore.



The shore is land near a large body of water (such as the ocean or a very big lake).



At night, the big light tell ships when they are close to the shore.



Lighthouses make it safe for ships to sail at night near the shore.



It is spring and the wild flowers are blooming.



© 2007, G.K Lee & S. Lee

Do you remember what wild flowers are?



Wild flowers means no one planted the flowers here.



© 2007, G.K Lee & S. Lee

Do you notice the trees don't have green leaves?



They are not really trees.
They are called cactus.



© 2007, G.K Lee & S. Lee

Cactus are plants that live in arid landscapes.

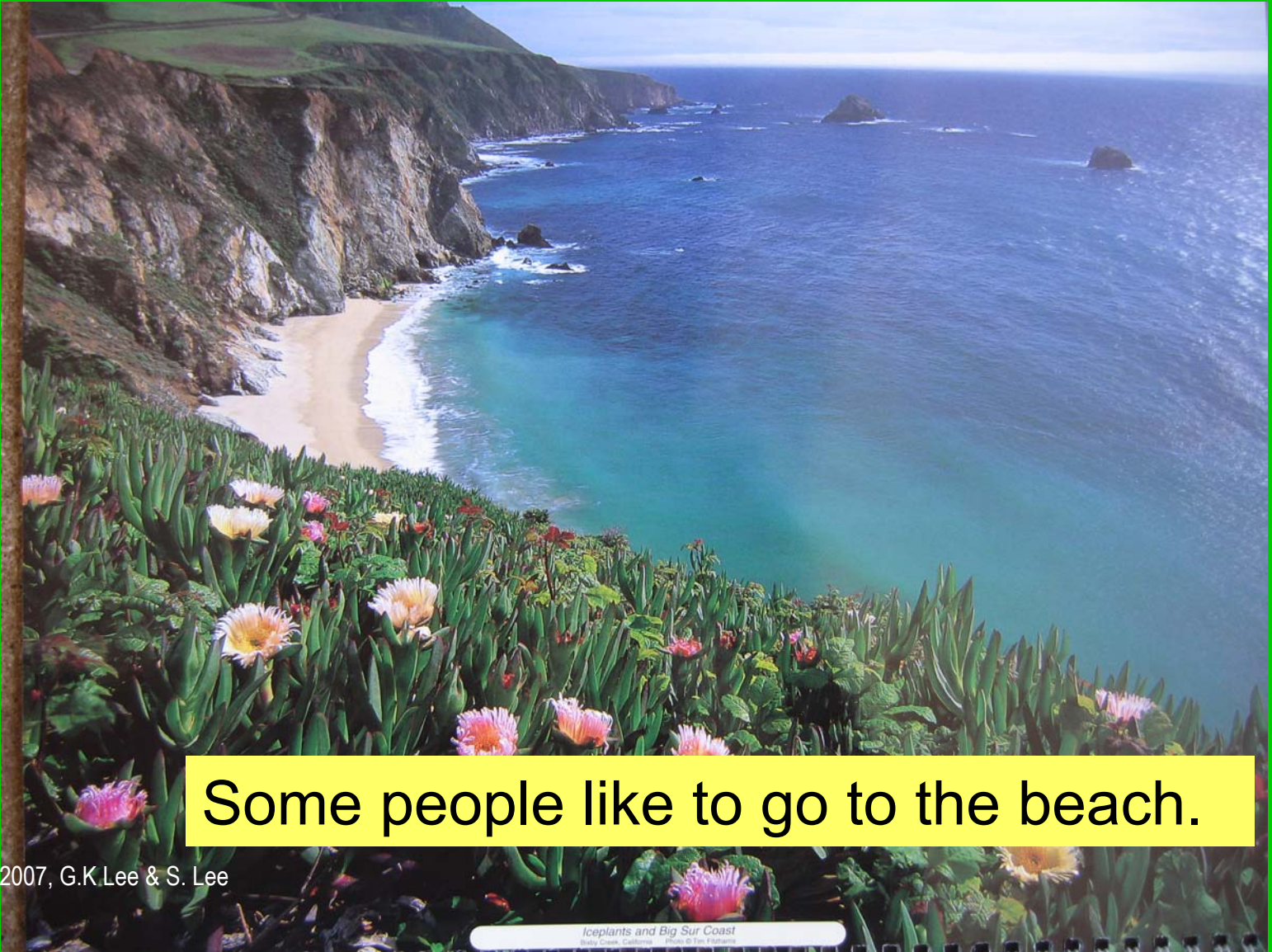


Remember, arid means dry. So if cactus live here, it means this place does not get much rain.



© 2007, G.K Lee & S. Lee

It is summer.



Some people like to go to the beach.



© 2007, G.K.Lee & S. Lee

Beach is another word for shore.



In this picture, you can see two kinds of beaches. One is sandy. The other is rocky.



© 2007, G.K Lee & S. Lee

Can you see any trees here?

There are no trees here. The flowering plant is called “Ice plant”. It is an arid land plant. This tells you there is little rain here.



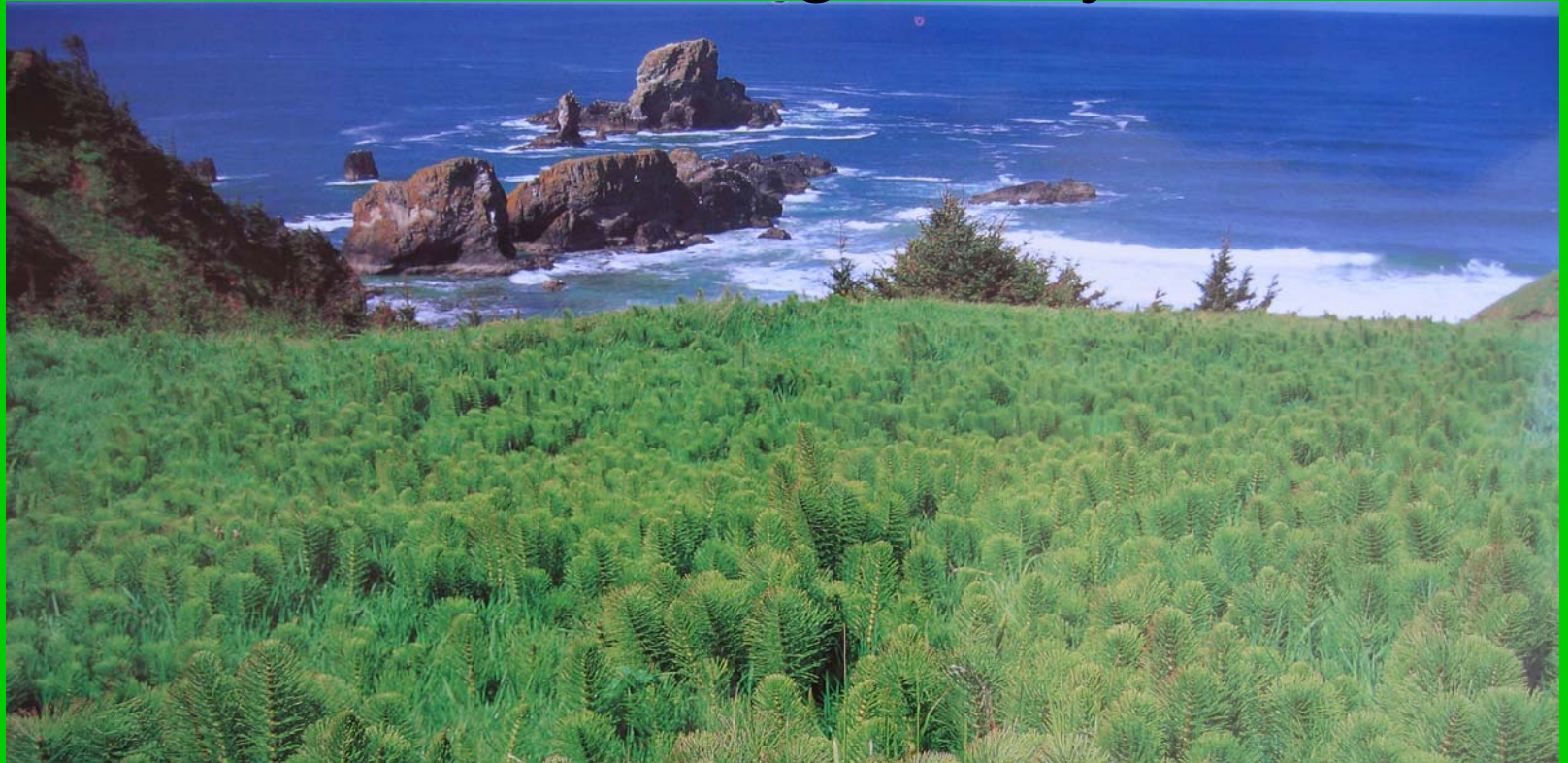
© 2007, G.K Lee & S. Lee

This place is called a coast or a coast line.



© 2007, G.K Lee & S. Lee

A coast or a coast line is at the edge of the land and a large body of water.



A beach, shore, shore line, coast, or coast line are all similar words. A large body of water can be an ocean or a big lake.



Do you see trees here?



There are some pine trees near the shore.
This tells you it rains here more than the
beach you saw in the other picture.



Not all the plants here are trees.

Most of the plants in this picture are not trees. The plants below are called “Horse Tail”. It only grows about 1 meter tall.



This is a harbor.



© 2007, G.K Lee & S. Lee

A harbor is a home for boats.



The water front is the name for the land and the buildings of the harbor.



This is a “small boat” harbor.



“Small boat” harbor means very big ships
do not come here.



Most of the boats in the picture are sailboats.



Sailboats have a tall pole on them called a “mast”. In the harbor, the sails are folded and put away.



© 2007, G.K Lee & S. Lee

It is Fall. Some of the leaves are changing color.



© 2007, G.K Lee & S. Lee

Can you see the waterfall?

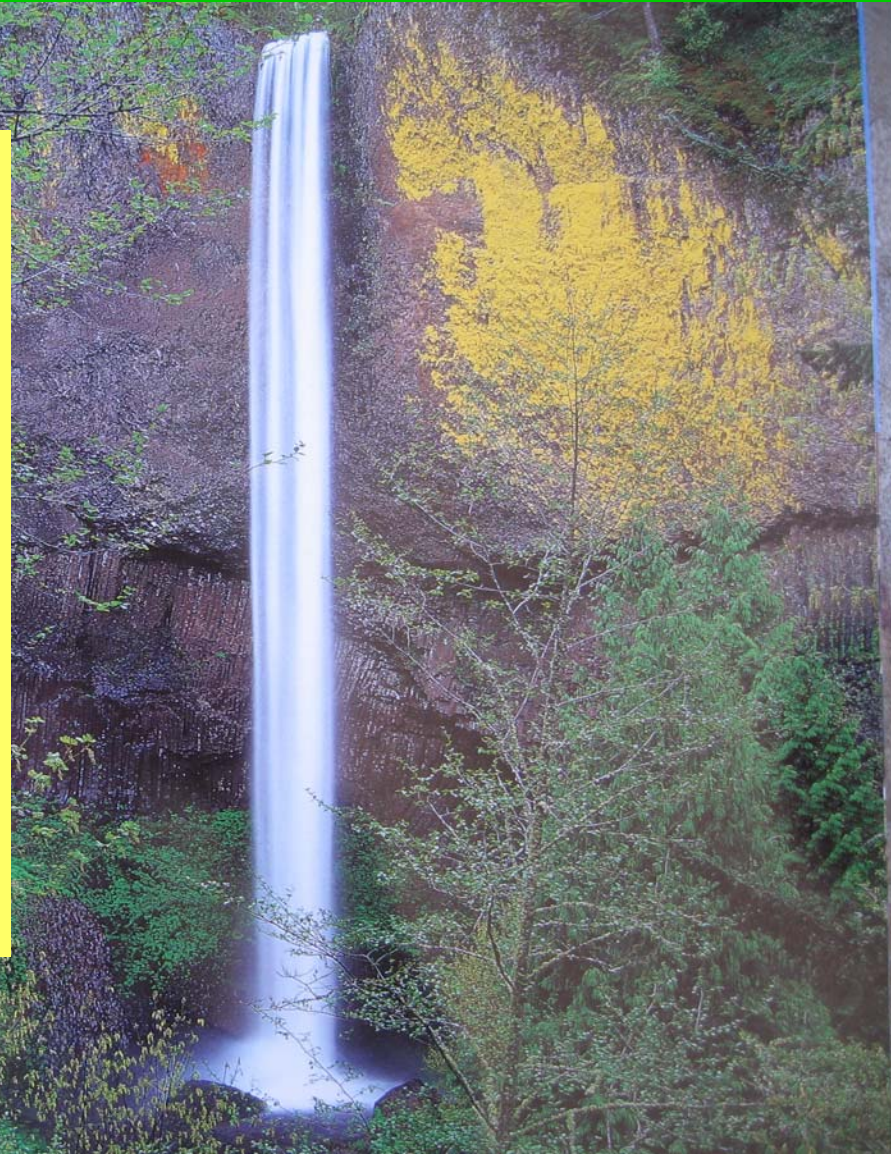
A waterfall is a place where water falls over the edge of some rocks.



The water falls into a pool at the bottom of the waterfall.

Water falling
into the pool
makes a loud
noise.

Sometimes it is
so loud you
cannot hear the
person next to
you talking.



What season is this?



© 2007, G.K Lee & S. Lee

It is fall. The tree leaves have changed color.



This season is called fall because the leaves will fall to the ground soon.



Trees that drop their leaves each year are called “deciduous” trees.



The deciduous trees near Ban Na Fa drop their leaves in the hot season.



Can you see the mountains?



© 2007, G.K Lee & S. Lee

The tall, white mountains are called “snow-capped” mountains.



“Snow-capped” means the tall mountains are covered with snow. To have snow, it must be very cold.



Can you see the hills?



Hills are not as tall as mountains.
Hills that are connected to
mountains are called “foothills”.



Do you see the forest?

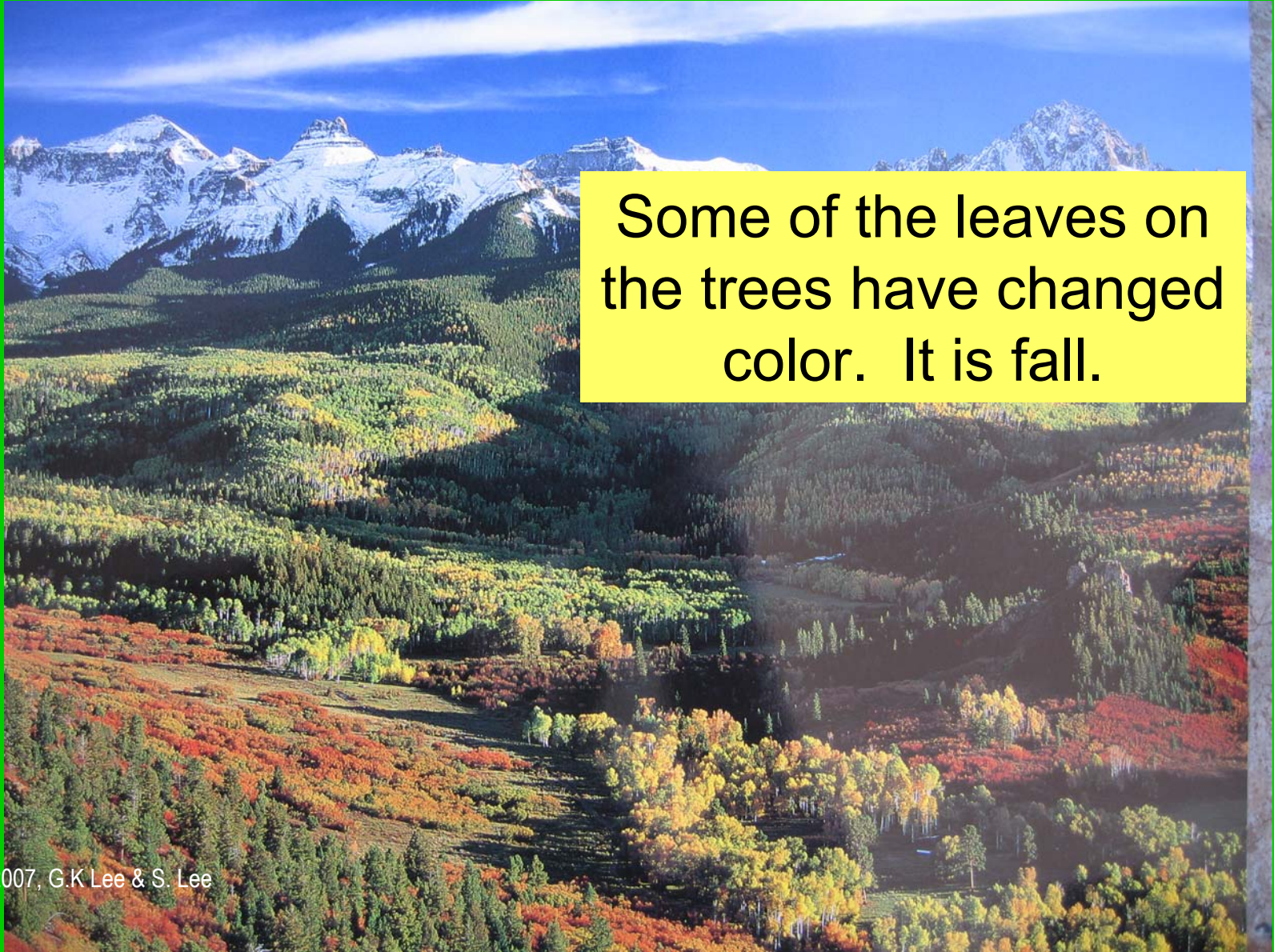


A forest is a place with
many, many trees.



© 2007, G.K Lee & S. Lee

Look at the trees in the forest. What season is it?



Some of the leaves on the trees have changed color. It is fall.



© 2007, G.K Lee & S. Lee

Do you see a meadow?



© 2007, G.K Lee & S. Lee

A meadow is a big open field in a forest.



© 2007, G.K Lee & S. Lee

Can you guess what season it is?



© 2007, G.K Lee & S. Lee

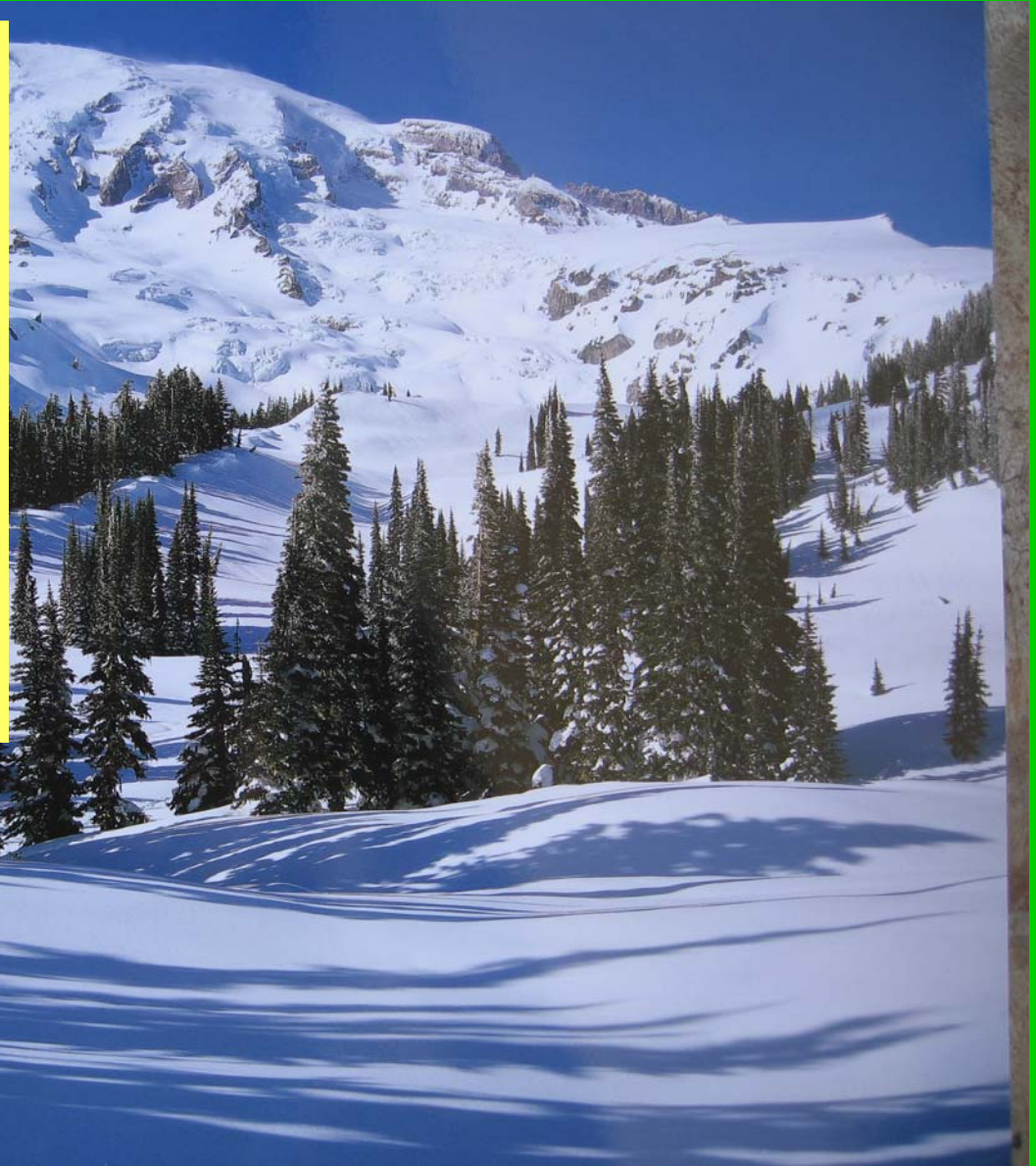
It is winter. There is snow on the ground.



© 2007, G.K Lee & S. Lee

How cold must it be to have snow?

You must have freezing temperatures to have snow. This means the temperature must be 0°C / 32°F or colder.



How can it get so cold to have snow?



There are two ways to get cold temperatures. One way is to live in a place with a very cold season. Another way is to have a very tall mountain.

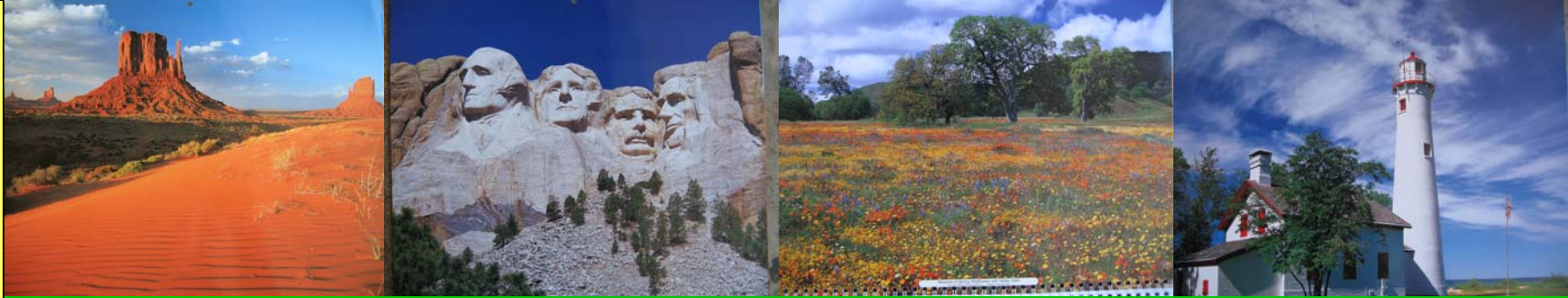


What kind of mountain is in this picture?



© 2007, G.K Lee & S. Lee

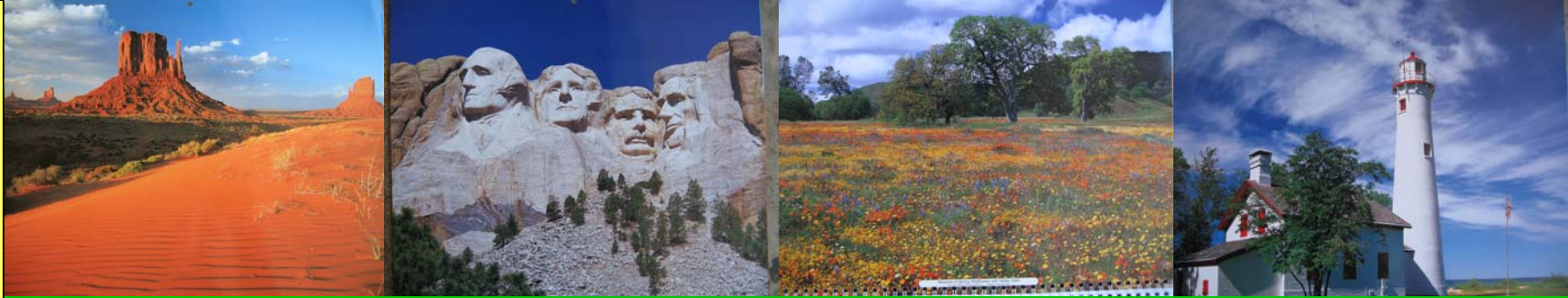
This is a snow-capped mountain.



**You have seen pictures of
different places.**



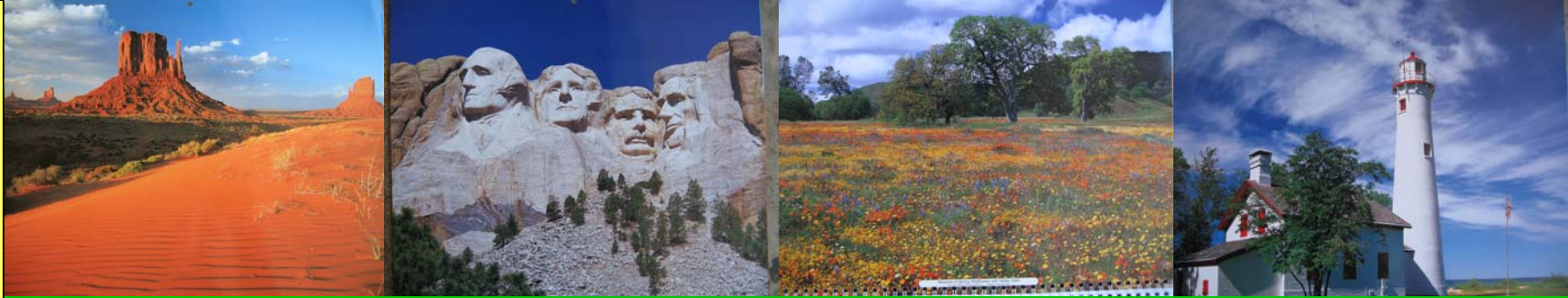
© 2007, G.K Lee & S. Lee



In each place, the land and plants were different.



© 2007, G.K Lee & S. Lee

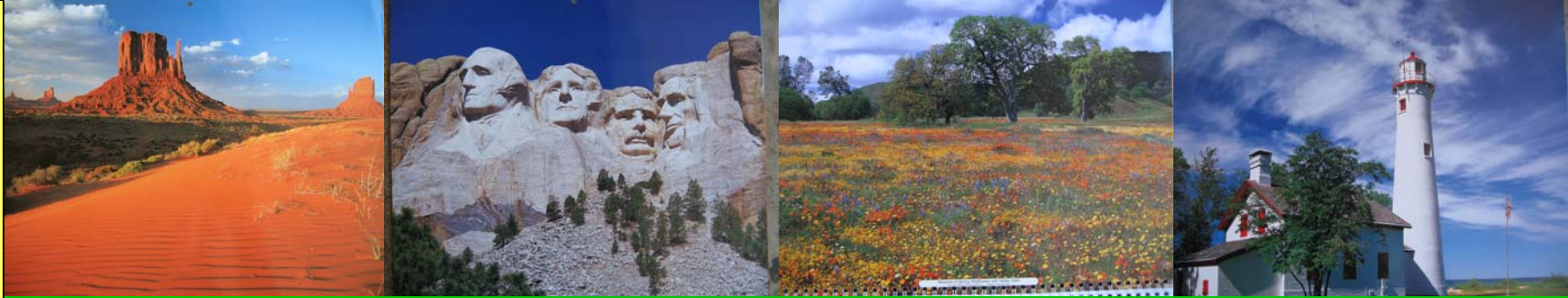


Some of the places were natural.



© 2007, G.K Lee & S. Lee

A “natural” place has very few or no people living there.

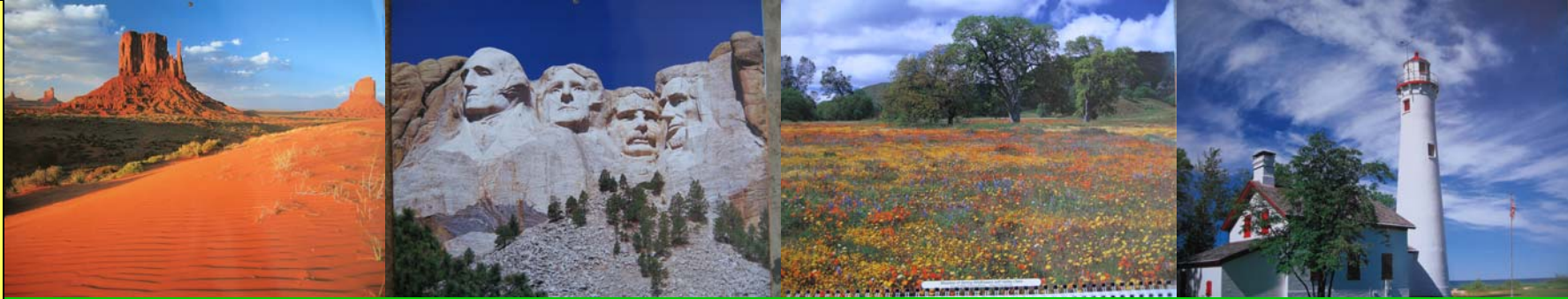


Some of the places were built-up.



© 2007, G.K Lee & S. Lee

“Built-up” means there are people and buildings present.

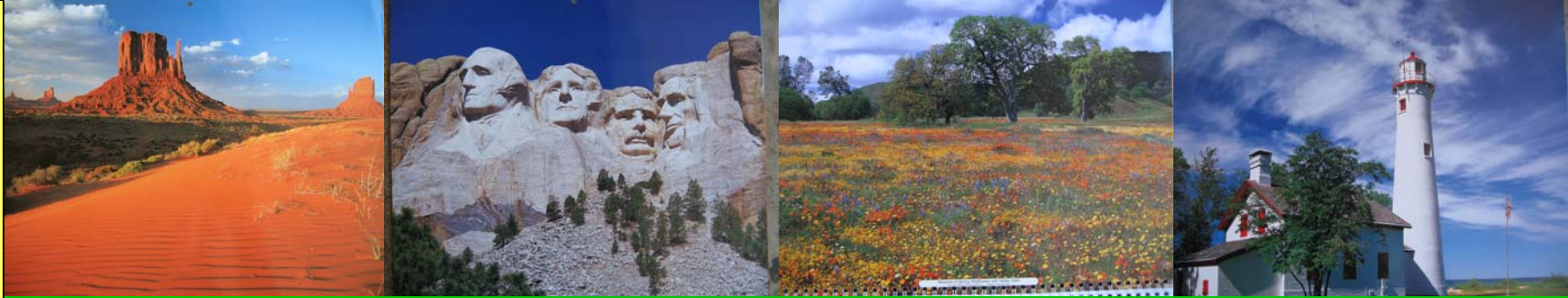


You can look carefully at the land and plants to know more about a place.



© 2007, G.K Lee & S. Lee

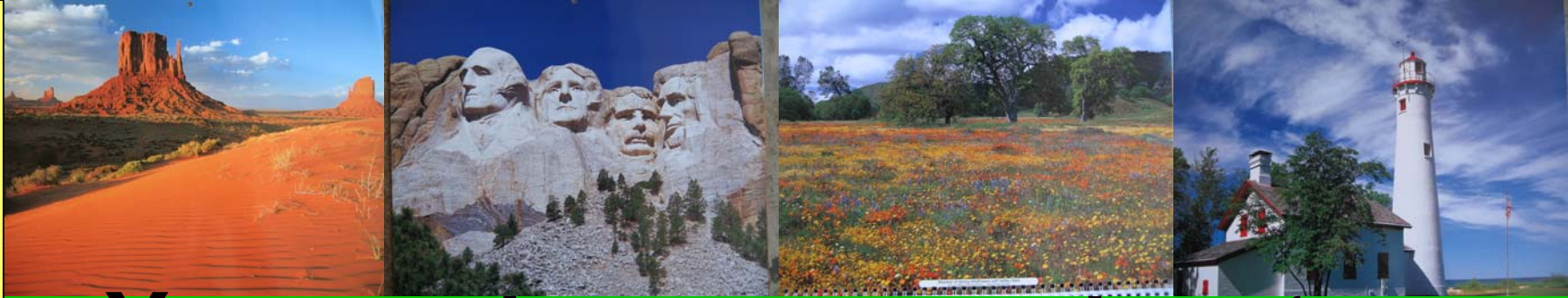
The plants can tell you about the rainfall and the season of a place.



When geographers travel, they look at the land and plants to learn more about a place.



© 2007, G.K Lee & S. Lee



**You can be a geographer, too.
When you travel, look at the land
and the plants. Then you can
learn more about different places.**



© 2007, G.K Lee & S. Lee

RTC-TH

Rural Training Center-Thailand



is dedicated to providing
community-based
environmental education
for the self-sufficiency
and sustainability of
small rural family farms





The RTC-TH was created to honor the memory of Mr. Tang Suttisan, a father, a farmer, and a man who valued education and used it in starting his family farm



REEEPP

Rural Environmental Education Enhancement Pilot Program



An innovative, non-traditional community-based environmental education program integrating math, science, geography, English language, and technology lessons for environmental stewardship using interactive experiential learning in outdoor settings at Ban Na Fa Elementary School, Nan Province, Thailand..



The End



© 2007, G.K Lee & S. Lee