

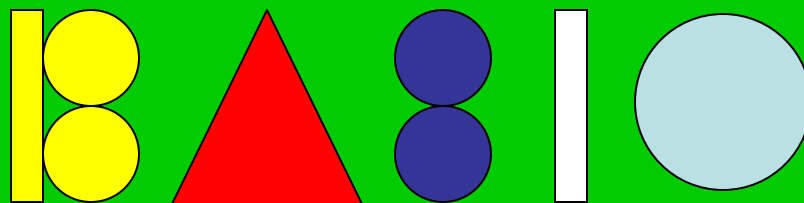
Rural Training Center – Thailand (RTC-TH)

REEEPP FOCUS

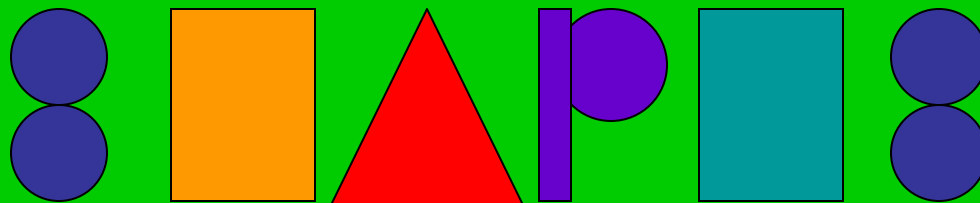
An innovative, non-traditional community-based environmental education program integrating math, science, geography, English language, and technology lessons for environmental stewardship using interactive experiential learning in outdoor settings at Ban Na Fa Elementary School, Nan Province, Thailand.



BASIC



SHAPES





This is an English Language Training module of **REEEPP**

Rural Environmental Education Enhancement Pilot Program
presented by
The Rural Training Center-Thailand

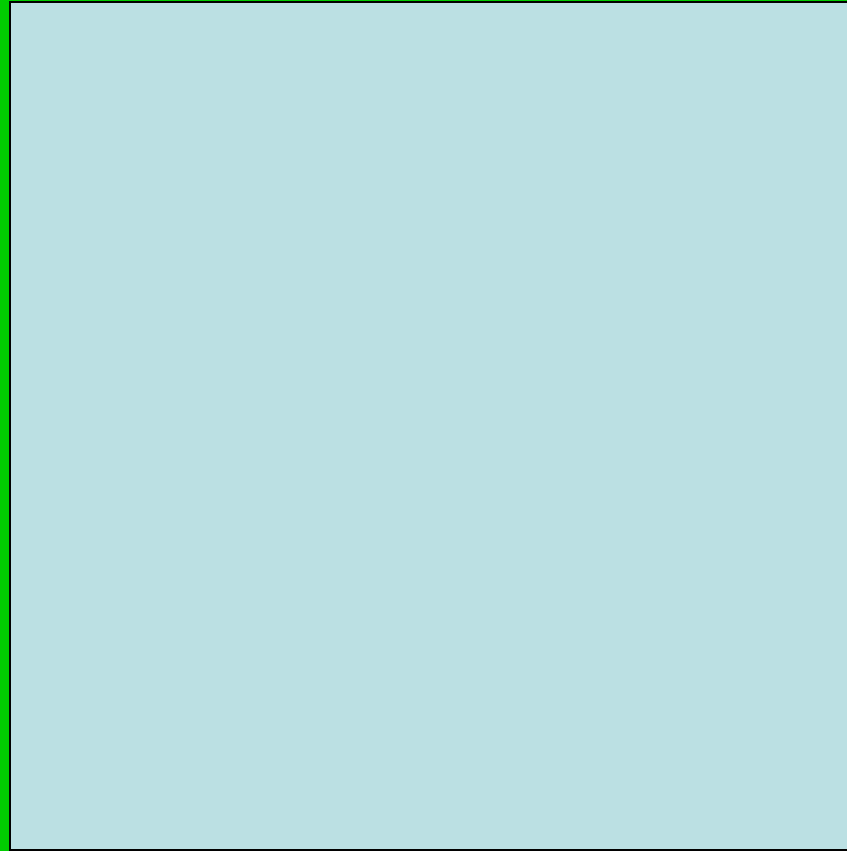


© 2007, G.K Lee & S. Lee

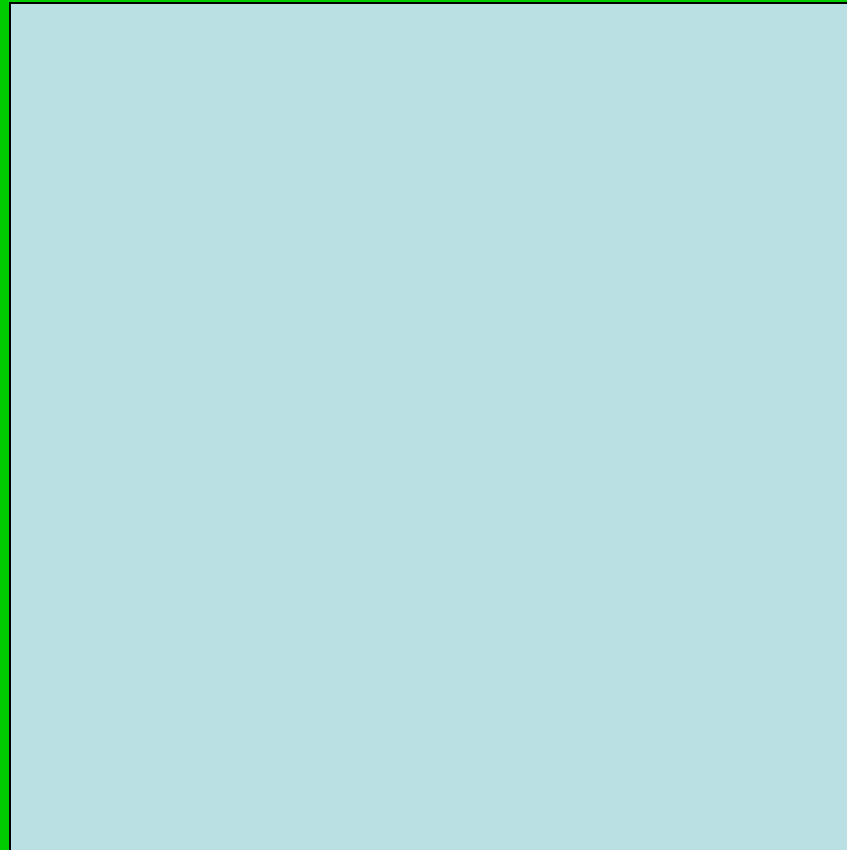
E-mail: rtc2k5@gmail.com

www.neighborhoodlink.com/org/rtct

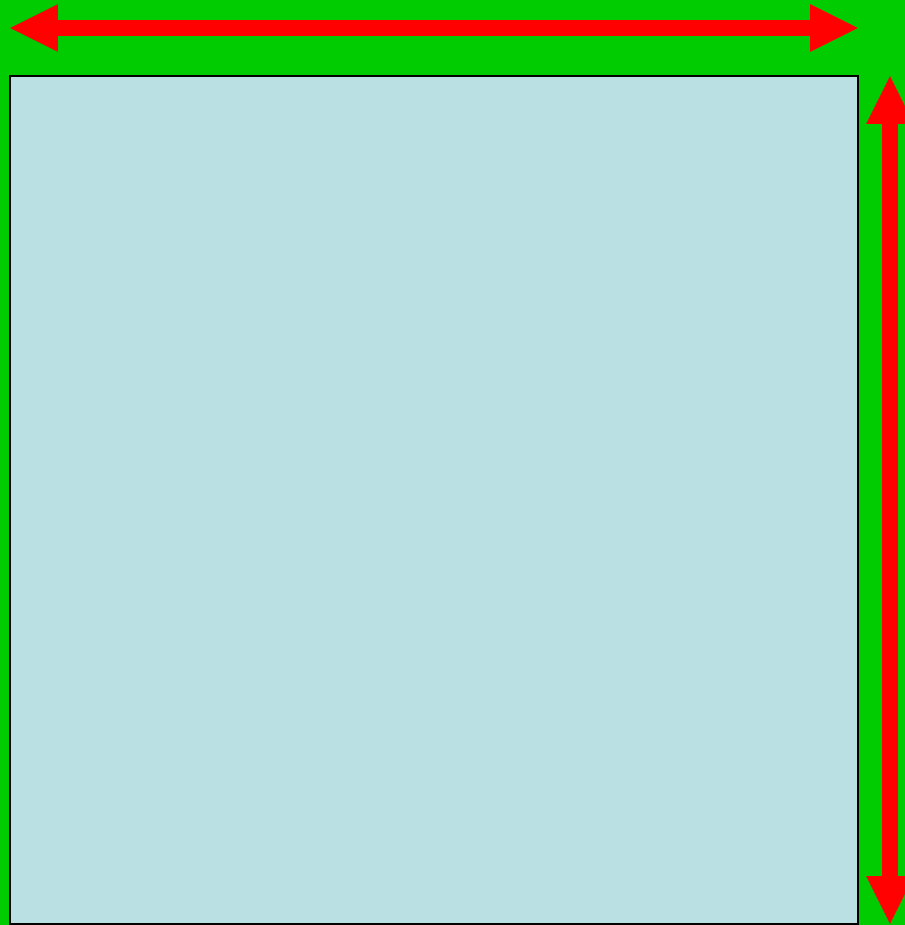
This is a square.



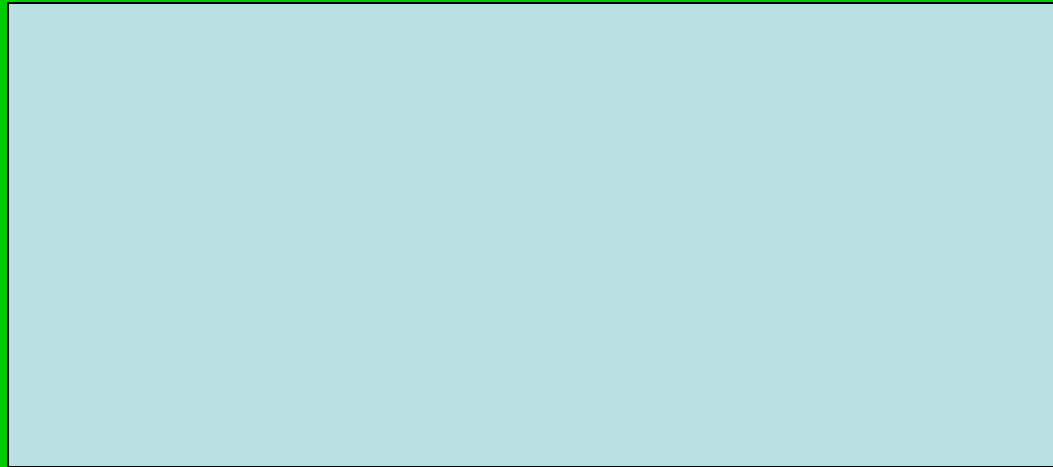
A square has four sides.



Each side of a square is the same length.



This is a rectangle.

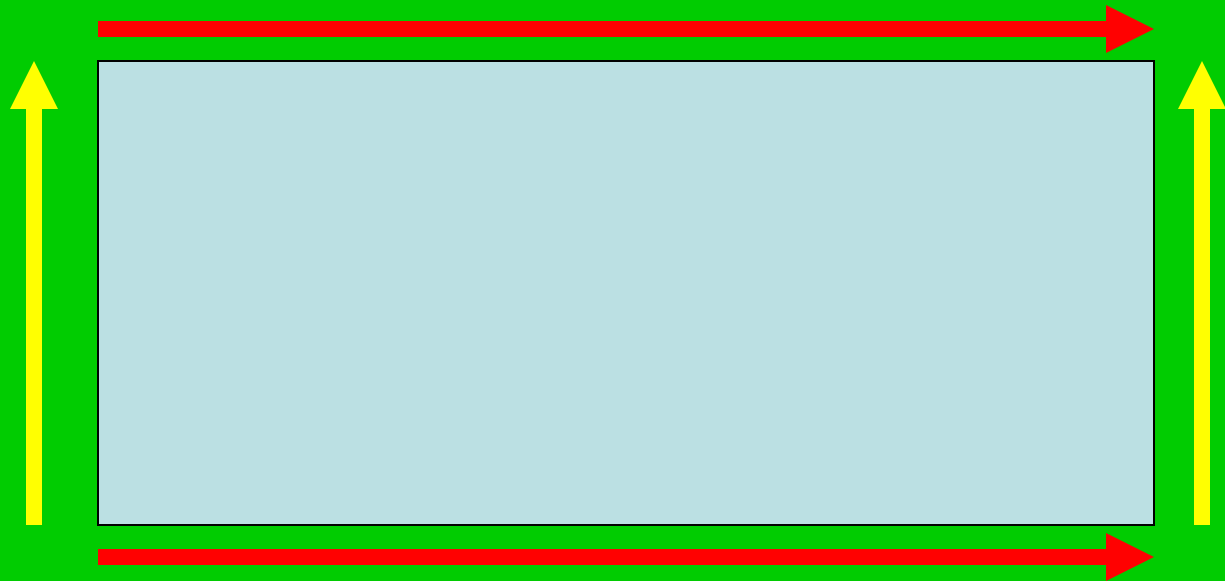


It also has four sides.

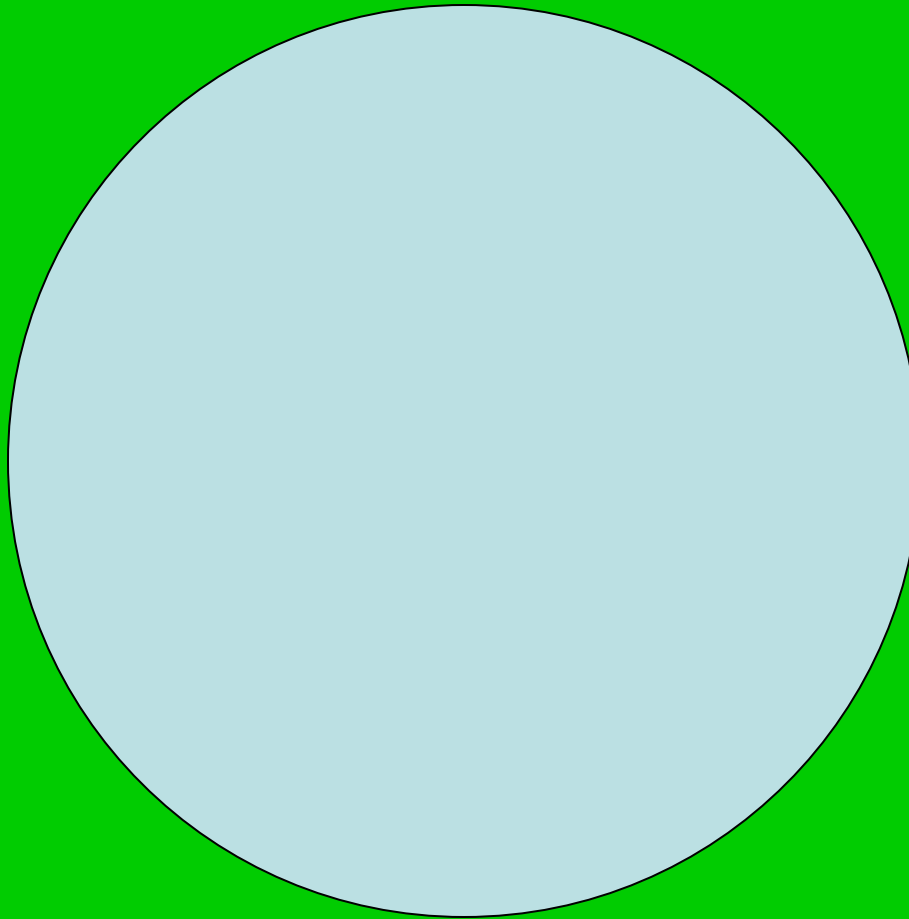
But the sides are not all equal.



In a rectangle, only the sides opposite each other are equal.

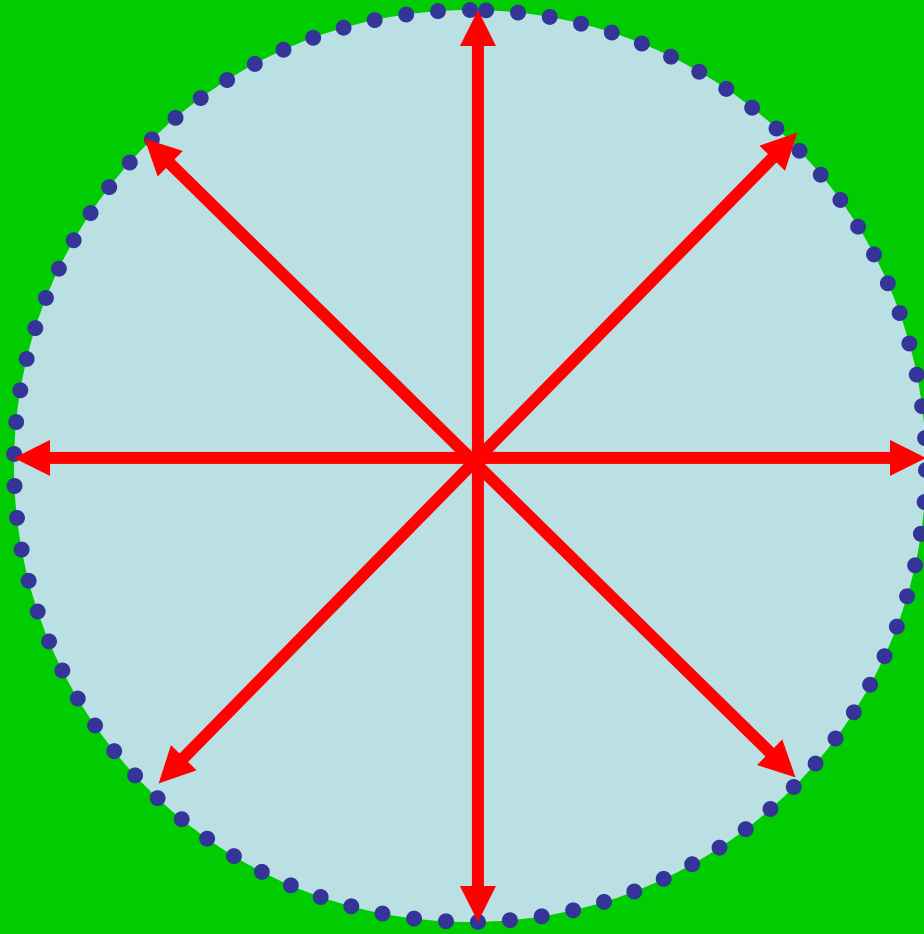


This is a circle.

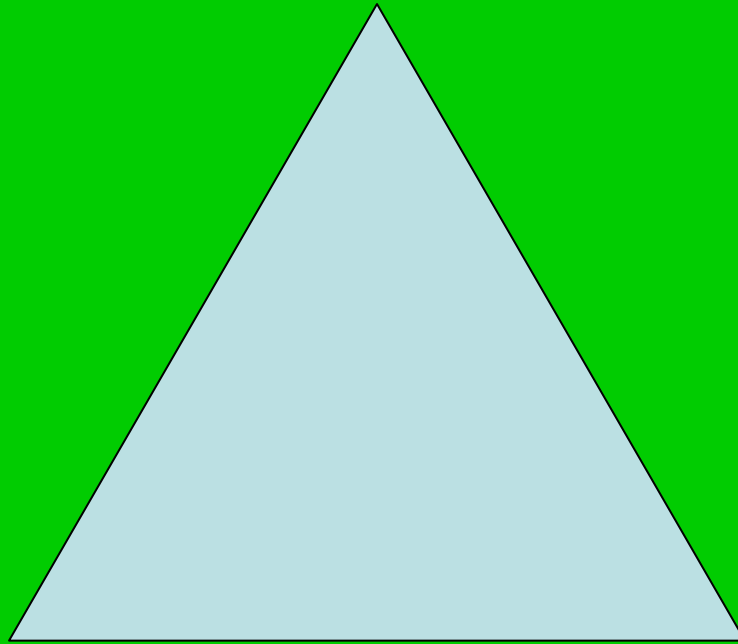


© 2007, G.K Lee & S. Lee

All points on the edge of the circle are the same distance from the center.

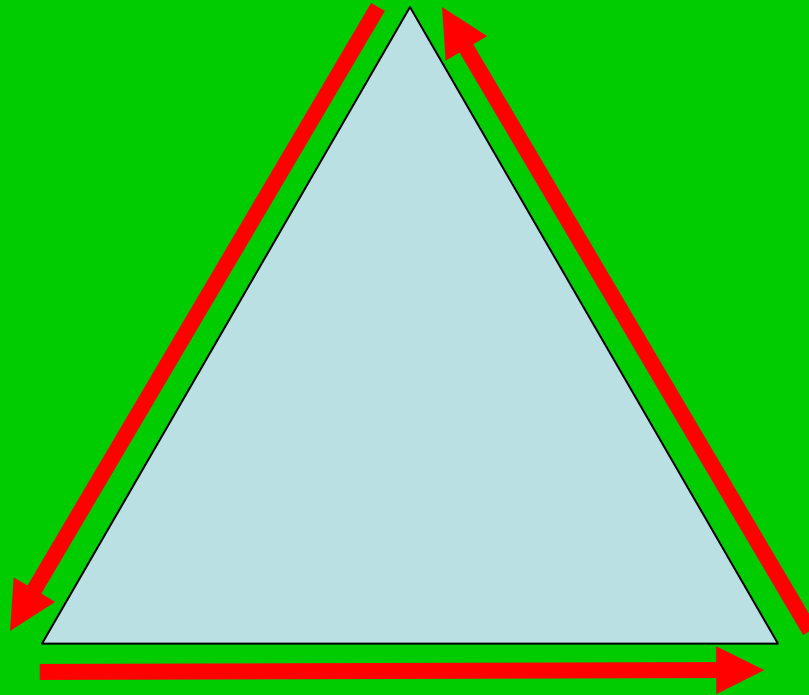


This is a triangle.

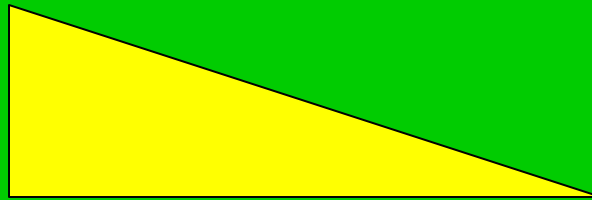
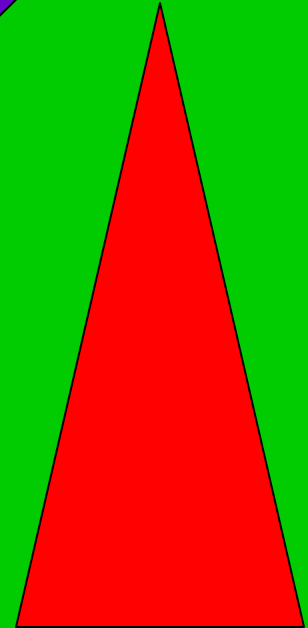
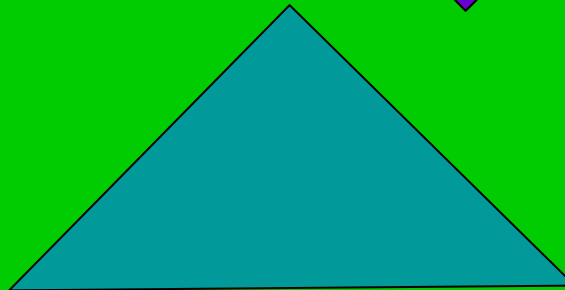
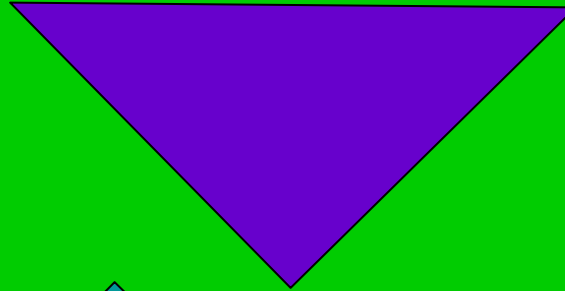
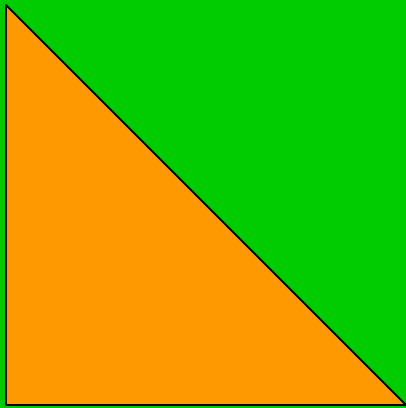


© 2007, G.K Lee & S. Lee

A triangle has three sides.



These are all triangles.
They all have three sides.



Can you find some circles in this symbol?



There are six circles in this symbol.



Here are
some tiles in
a bathroom.



© 2007, G.K Lee & S. Lee

The tiles are
squares.

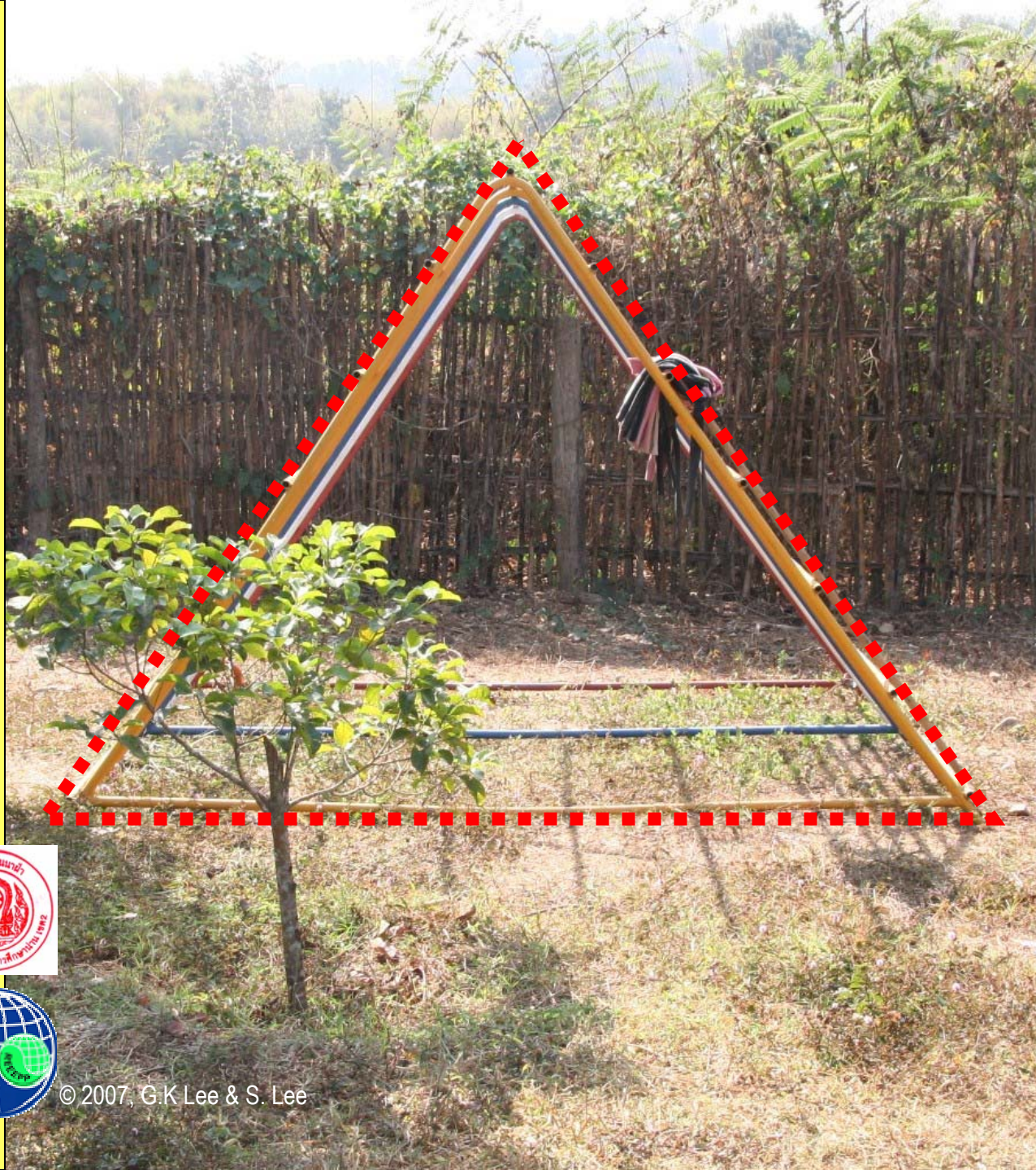


What
shape
can you
see
here?



© 2007, G.K Lee & S. Lee

Here is
a
triangle.



© 2007, G.K Lee & S. Lee

How many circles can you find?



© 2007, G.K Lee & S. Lee

There are two circles in this symbol.



© 2007, G.K Lee & S. Lee

The Thai flag is a **rectangle**.



The Thai flag has five **rectangles** in it.

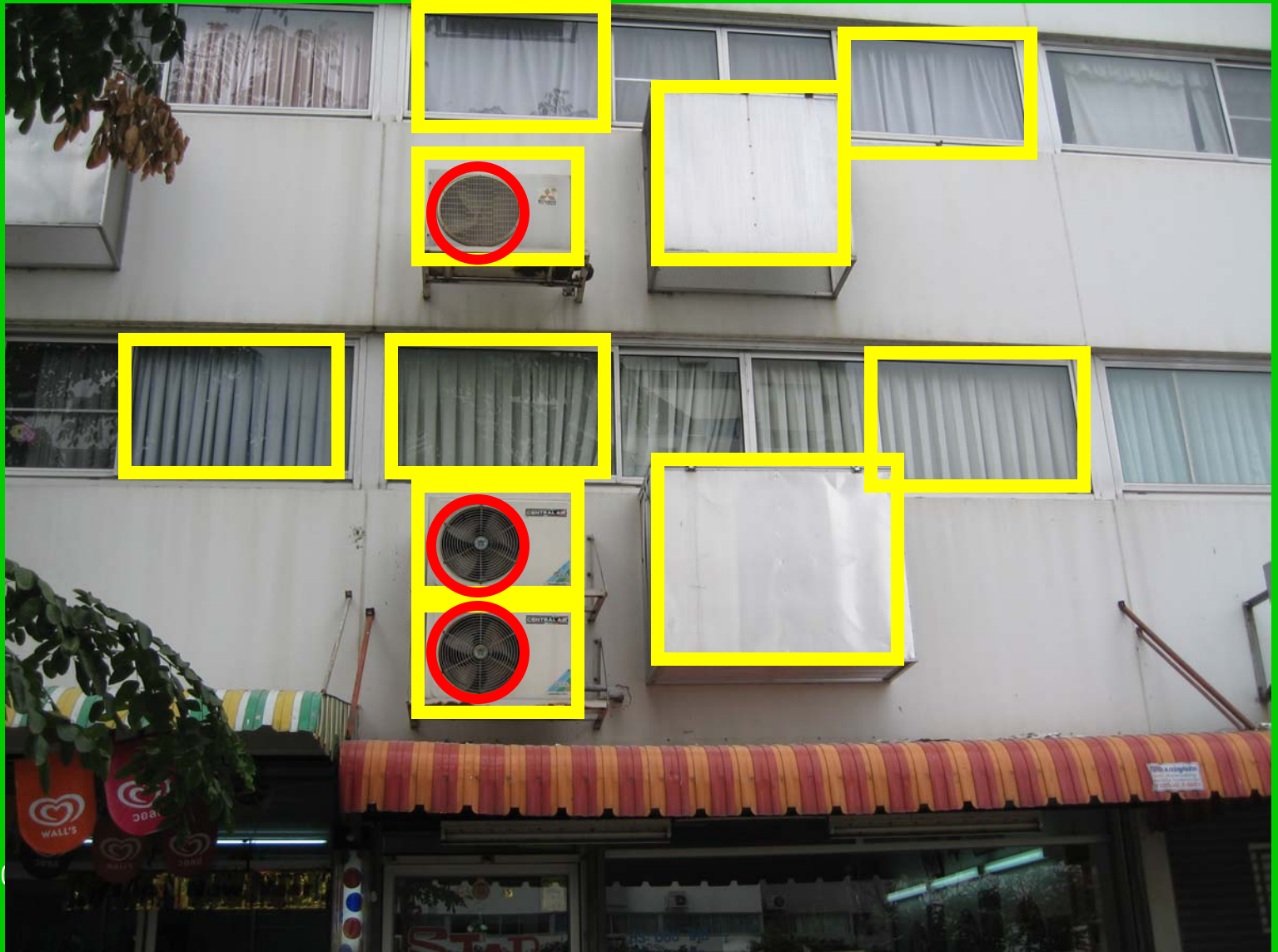


What shapes can you recognize?



© 20

Here are some **circles** and **rectangles**.



© 20

What
shapes
do you
see in
this
sign?



There
are two
triangles.





And there
are two
rectangles.



What shape is this?



It is a circle.



Do you see any circles in this picture?



© 2007, G.K Lee & S. Lee

There are two circles. Can you find them?



© 2007, G.K Lee & S. Lee

Here are the two **circles**.



© 2007, G.K Lee & S. Lee

Do you see any rectangles in this picture?



© 2007, G.K Lee & S. Lee

Here are some rectangles.



Do you see something that looks
round like a circle?



© 2007, G.K Lee & S. Lee

Yes, it is the globe.



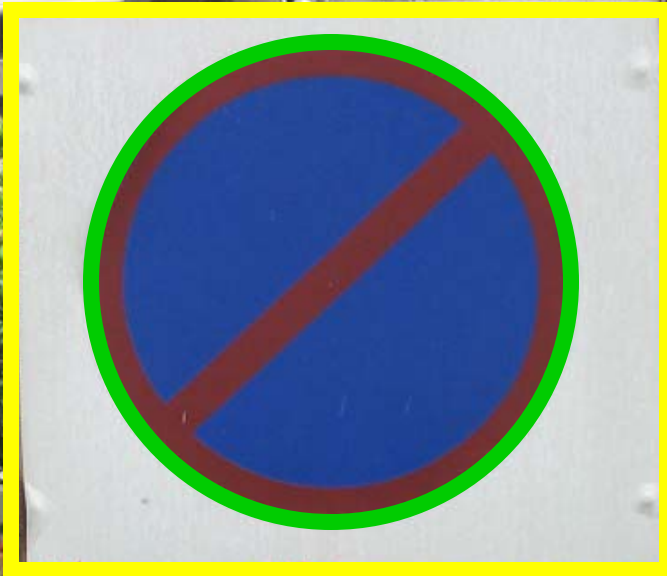
© 2007, G.K Lee & S. Lee

What shapes
do you see in
this photo?



© 2007, G.K Lee & S. Lee

There is a
square and a
circle.



What shapes can you see?



Do you see any triangles?



Here is a **triangle** and some
rectangles.



What shape
to you see
here?





It is a circle.

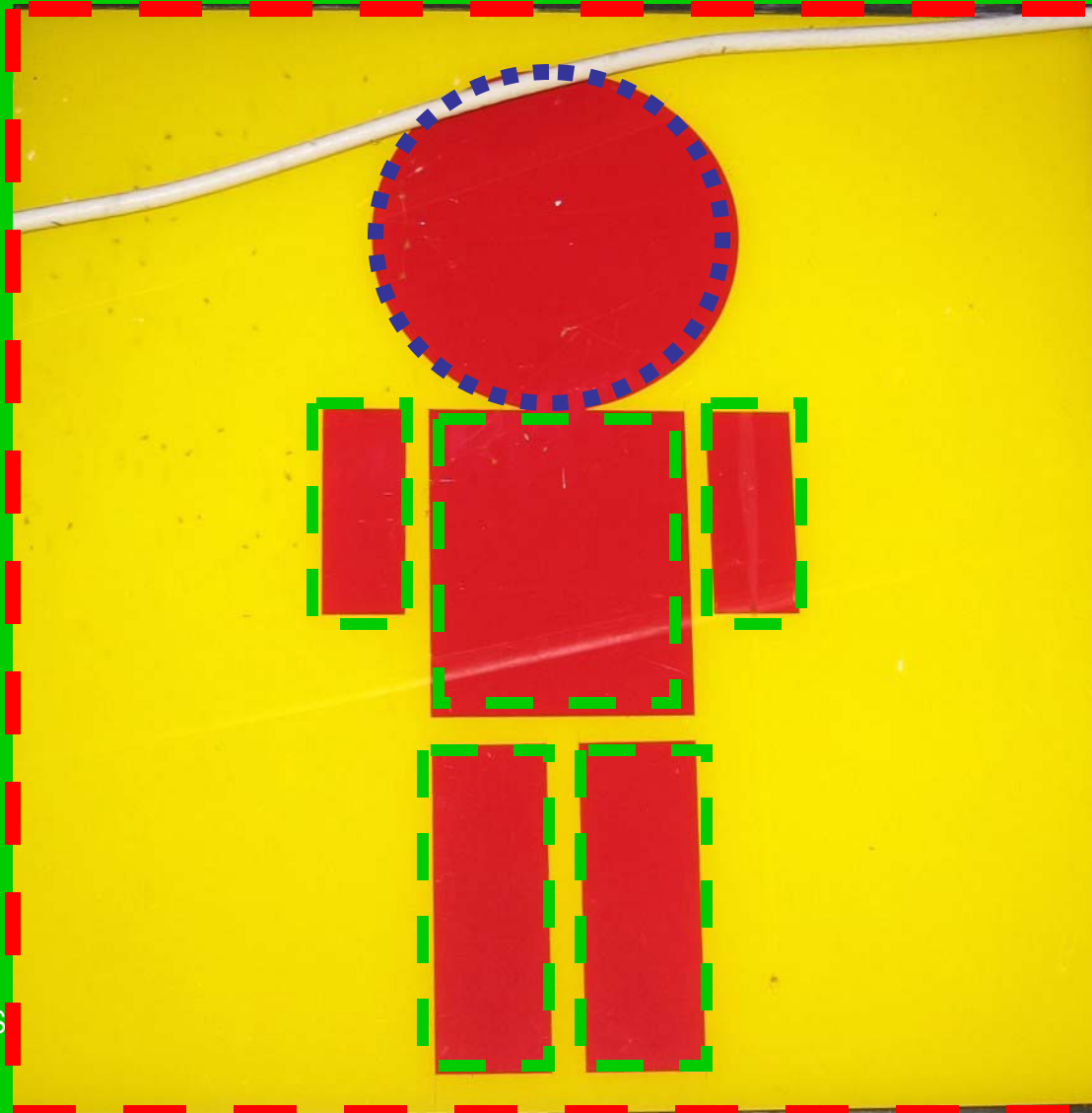


How did they make this symbol?



© 2007, G.K Lee & S.

They used a **square**, some **rectangles**, and a **circle**.



How can you make this symbol?



© 2007, G.K Lee & S. Lee

Start with a square, circle, two triangles and some rectangles.



Start with a square, circle, and some rectangles.



© 2007, G.K Lee & S. Lee

How many rectangles can you find?



© 2007, G.K Lee & S. Lee

How many rectangles can you find?



© 2007, G.K Lee & S. Lee

We found seven rectangles.



© 2007, G.K Lee & S. Lee

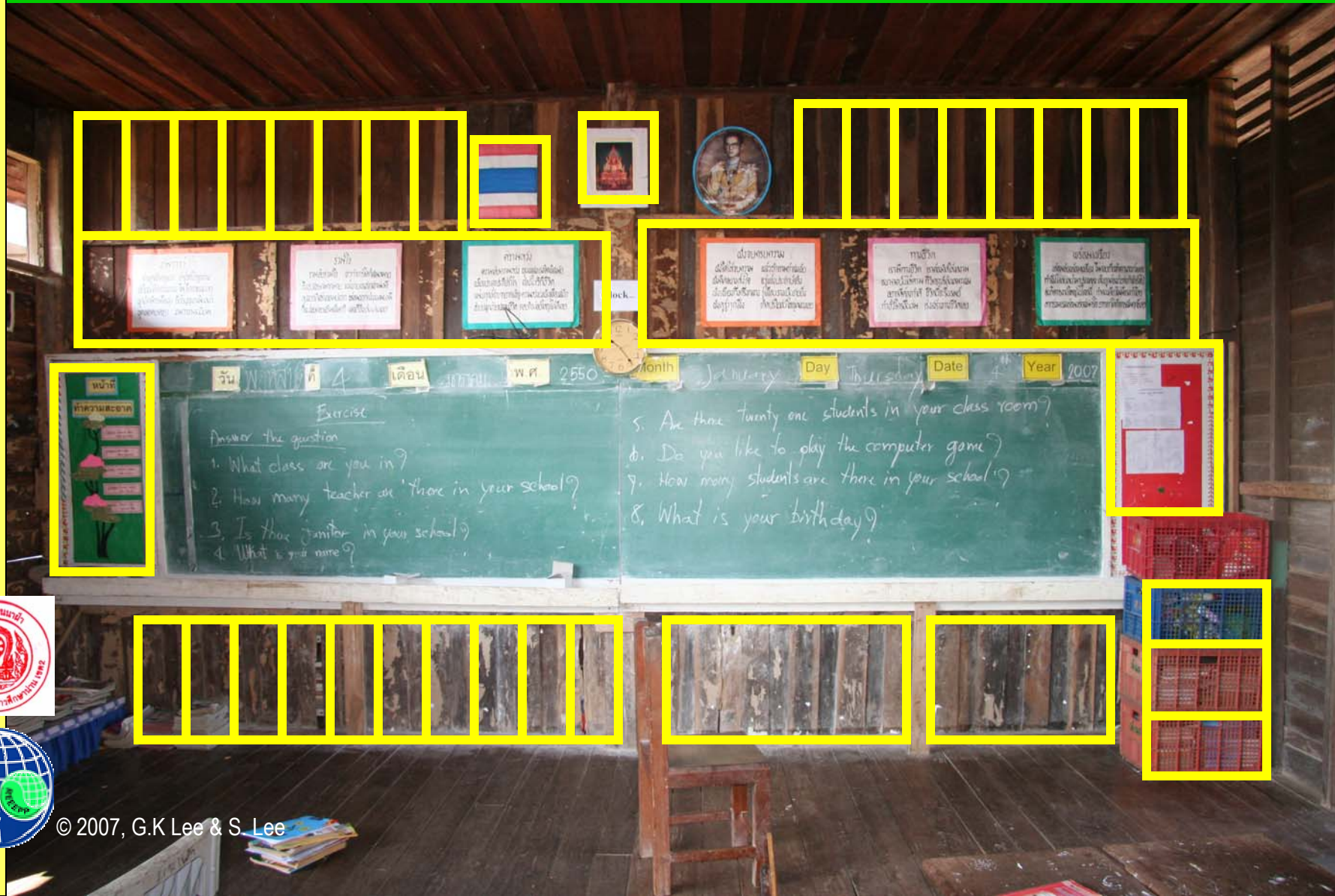
Do you see any rectangles?



Here are some rectangles.



Here are more rectangles.



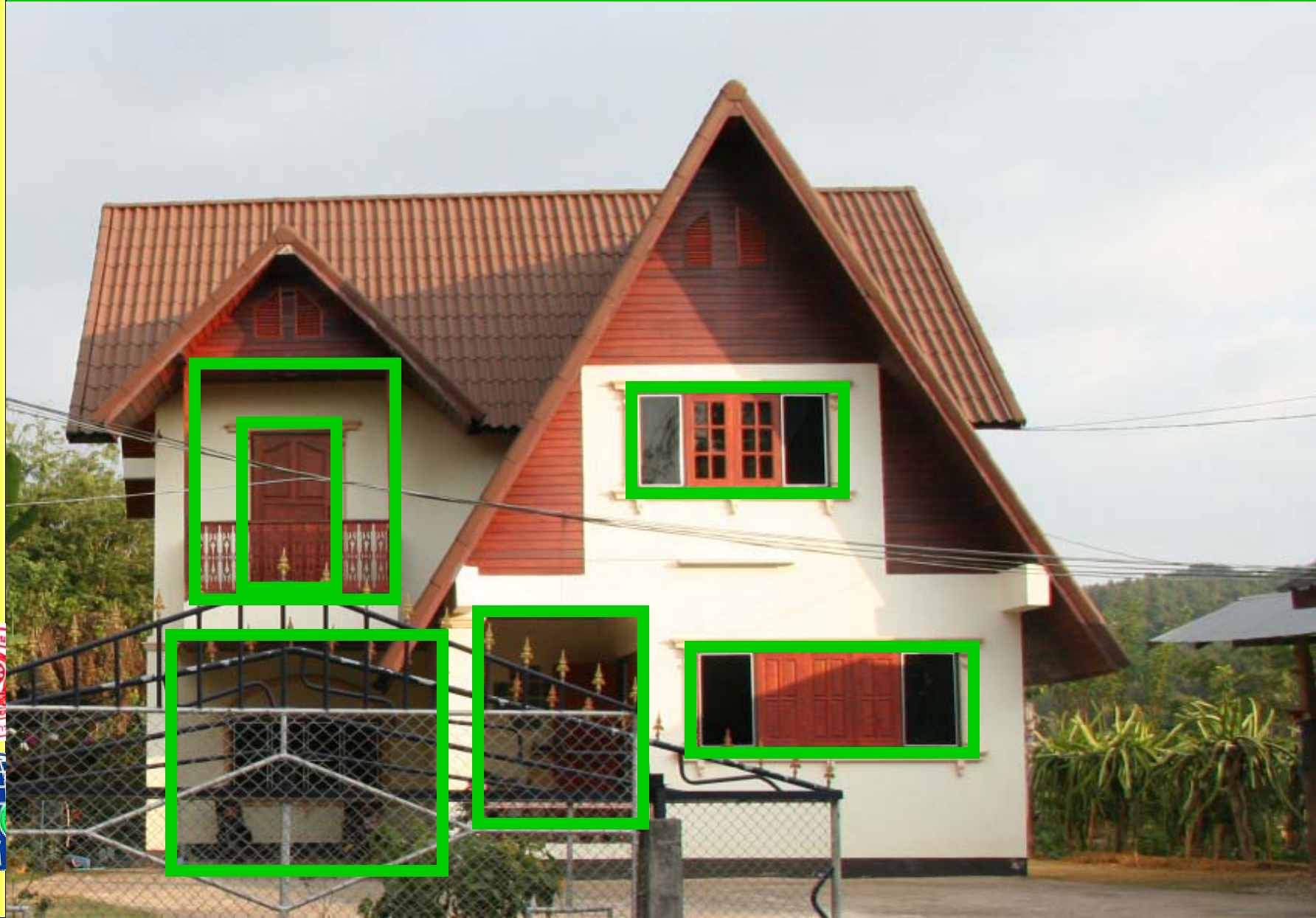
What shapes can you find?



Do you see any rectangles?



Here are some rectangles



Do you see any triangles?



Here are some triangles.

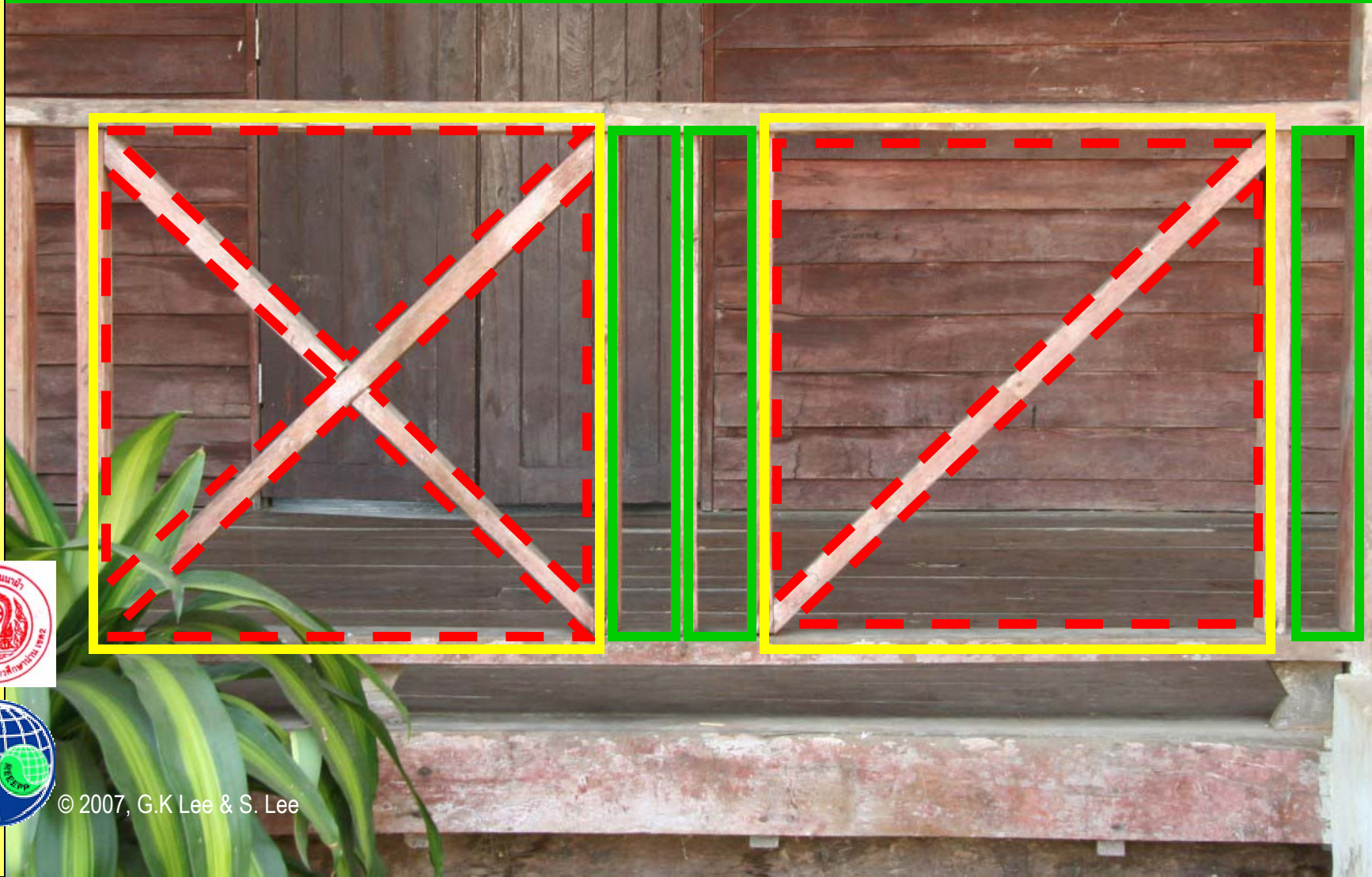


What shapes can you find?



© 2007, G.K Lee & S. Lee

There are squares, triangles, and rectangles in this picture.



What
shapes can
you see in
this picture?



© 2007, G.K Lee & S. Lee



Can you see
the **square**?



© 2007, G.K Lee & S. Lee

Can you see
the
rectangles?



© 2007, G.K Lee & S. Lee

What shapes can you see here?



© 2007, G.K Lee & S. Lee

There are **circles** and a **rectangle**.



What shapes do you see?



© 2007, G.K Lee & S. Lee

Here are some **rectangles**.

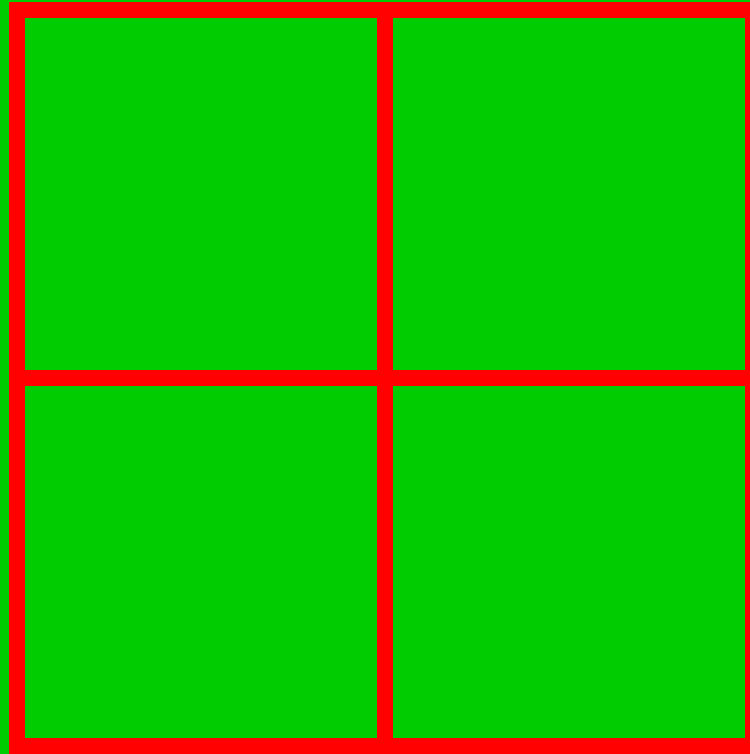


Here are some triangles.

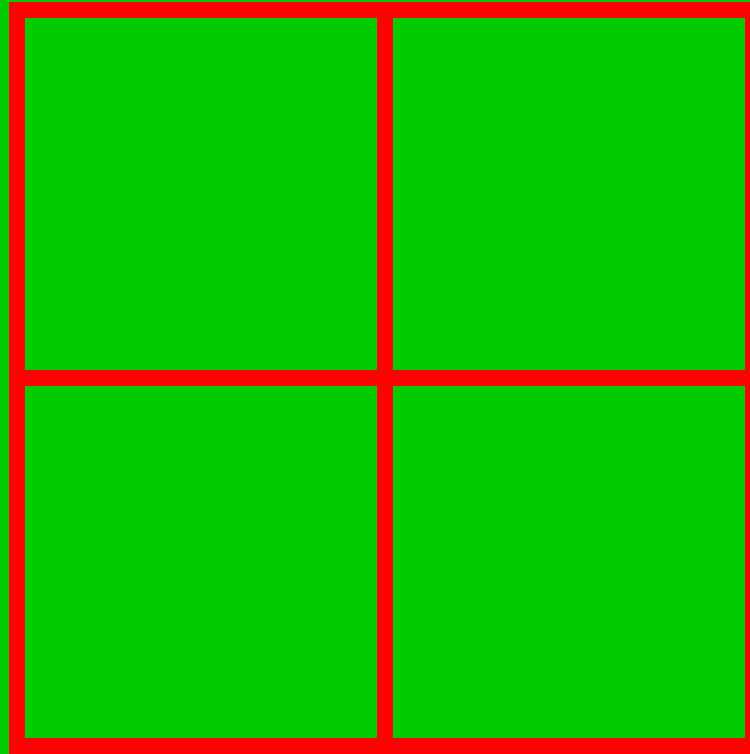


© 2007, G.K Lee & S. Lee

What shape do you see?



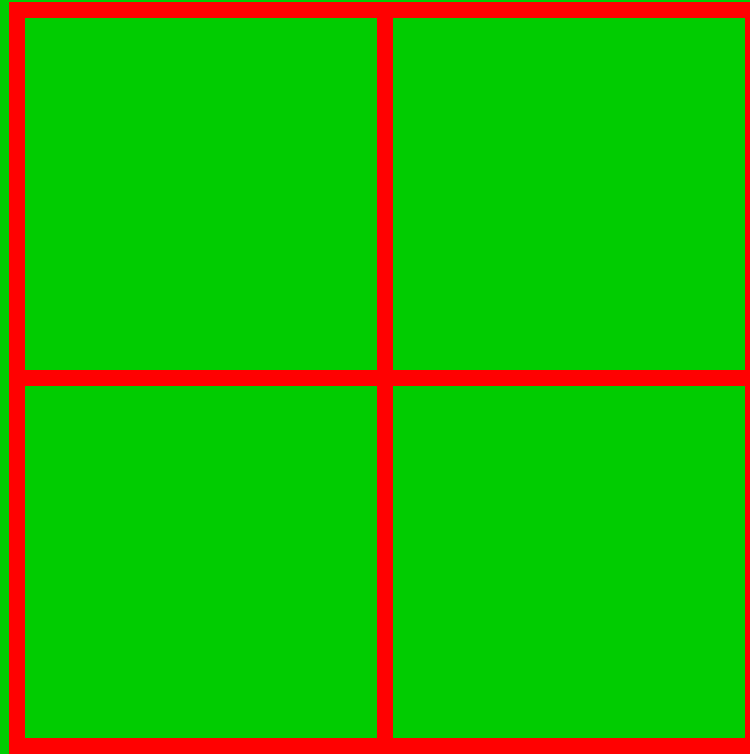
These are squares.



How many squares do you see?



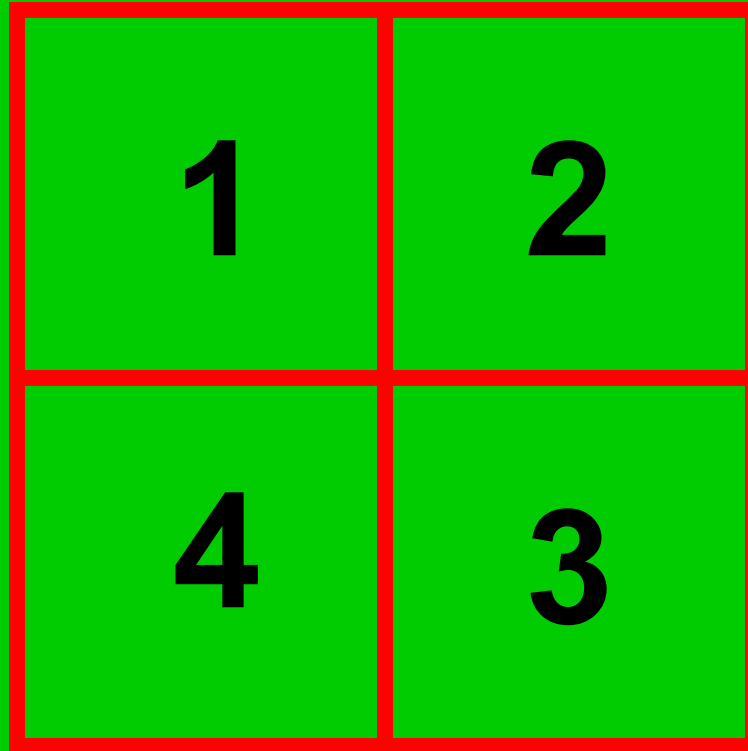
There are five squares.



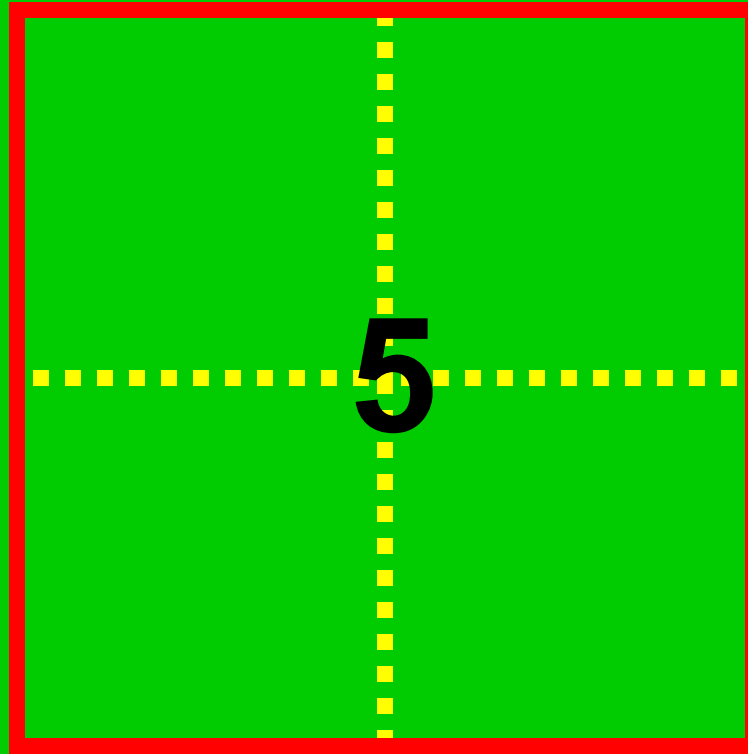
Can you see them?



Count them.



Count them.



RTC-TH

Rural Training Center-Thailand



is dedicated to providing
community-based
environmental education
for the self-sufficiency
and sustainability of
small rural family farms





The RTC-TH was created to honor the memory of Mr. Tang Suttisan, a father, a farmer, and a man who valued education and used it in starting his family farm



REEEPP

Rural Environmental Education Enhancement Pilot Program



An innovative, non-traditional community-based environmental education program integrating math, science, geography, English language, and technology lessons for environmental stewardship using interactive experiential learning in outdoor settings at Ban Na Fa Elementary School, Nan Province, Thailand..



The End



© 2007, G.K Lee & S. Lee