

Honda Odyssey: VX15- with Mag Mount Antenna

	<p>The “kiss” magnetic mounted antenna for the VX-150 was placed about the center of the roof of the Honda Odyssey mini-van.</p> <p>The challenge was to route the coax to a convenient place in the vehicle that would avoid possible snags, pinches, and creating a tripping or entanglement hazard.</p> <p>I decided to start routing the coax through the side sliding door gasket on the driver side of the vehicle.</p>	
	<p>I found I could work the coax behind the sliding door gasket and protect it from being pinched by the door.</p> <p>I then routed the coax to the upper edge of the driver's door. It is a tight fit, but the edge of the door gasket can be rolled back just enough to get the coax concealed behind it.</p>	
	<p>I put duct tape over the exposed coax to prevent it be accidentally snagged by anything.</p> <p>The duct tape was tucked under the door gaskets to reduce the chance of them being accidentally lifted or peeled off.</p>	
	<p>I hid the coax behind the door gasket all the way to the front edge of the door window, and half way down the front edge of the door. Excess coax was looped back up the front edge of the door on the inside door gasket.</p> <p>Duct tape covered the exposed coax to prevent it being accidentally snagged.</p>	

Honda Odyssey: VX15- with Mag Mount Antenna



The coax emerges from behind the interior front door gasket at the top of the dashboard. There is sufficient coax remaining to allow for connecting / disconnecting the VX 150.

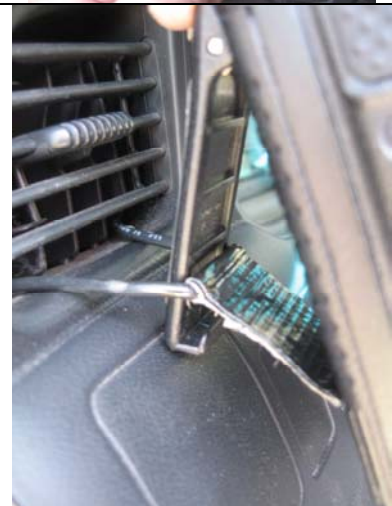


A wire hook / loop was made to secure the VX 150 to the ventilation grid, yet not interfere with the dashboard controls or instrument cluster.

Duct tape was used to make a grip strip so the hook / loop can be recessed for storage and easily retrieved when needed.



The VX 150 belt clip captures the hook / loop on the ventilation grid to secure the radio to the dash.



Honda Odyssey: VX15- with Mag Mount Antenna



The end result is a very neat radio mount with no loose wires and no obstruction of the dashboard controls, instruments or displays.

