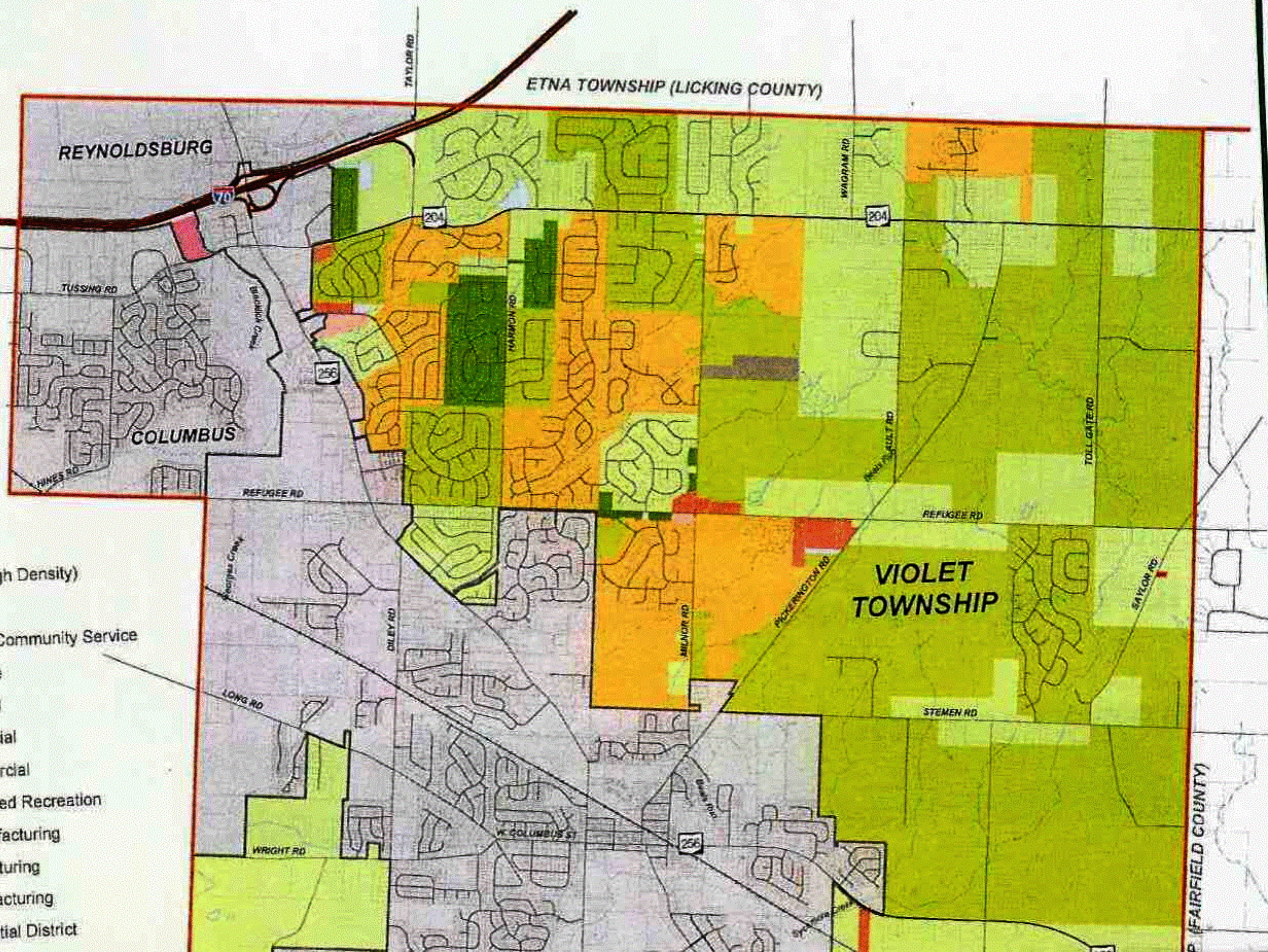


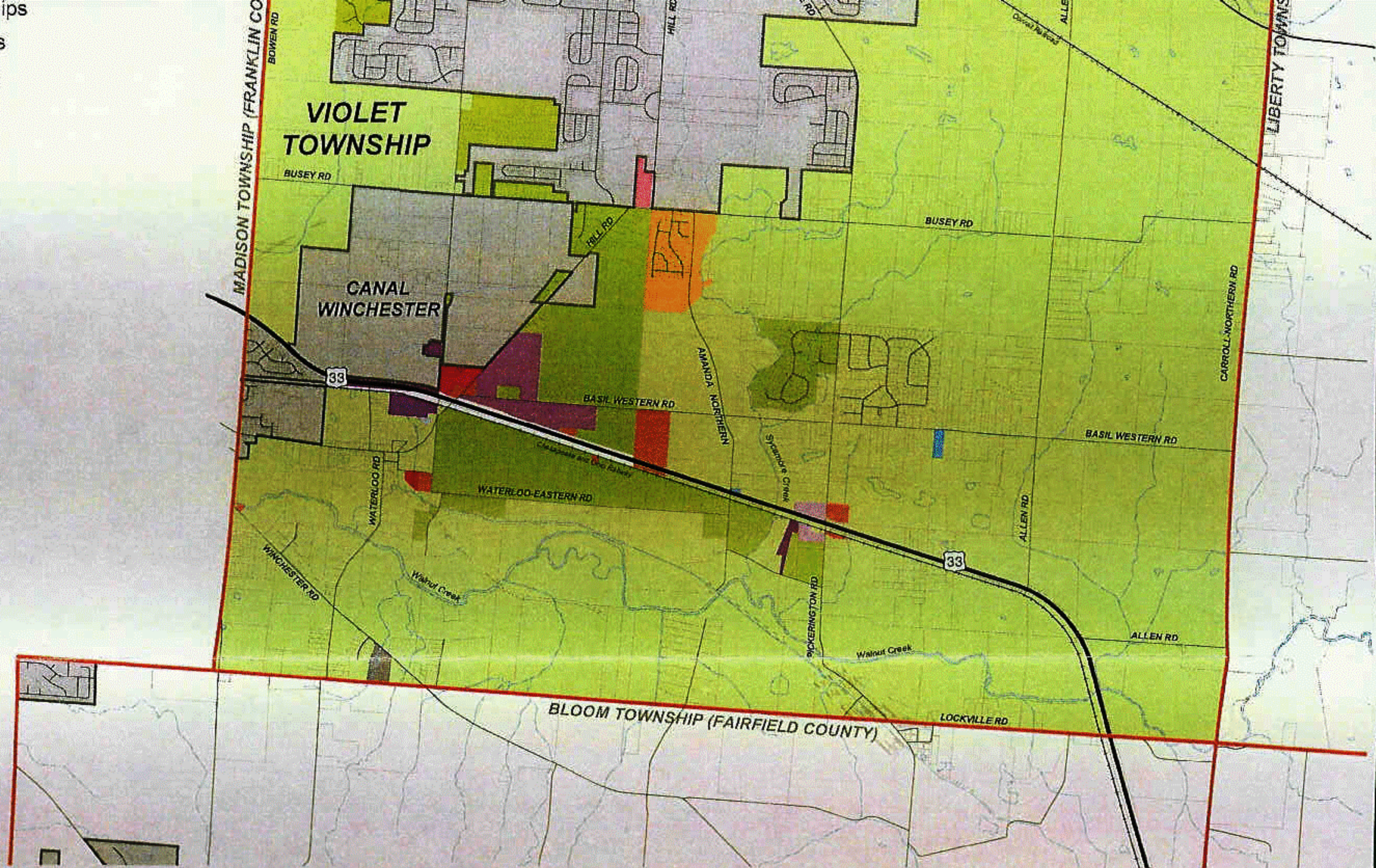
Legend

Existing Zoning

- R-1 Residential
- R-2 Residential
- R-7 Single Family (High Density)
- R-8 Two-Family
- S-1 Professional and Community Service
- S-2 Veterinary Service
- C-1 Local Commercial
- C-2 Limited Commercial
- C-3 Unlimited Commercial
- REC-1 Privately Owned Recreation
- M-1 Restricted Manufacturing
- M-2 Limited Manufacturing
- M-3 Unlimited Manufacturing
- PD Planned Residential District



- Townships
- Streams
- Parcels



Violet Township Development & Transportation Plan

Fairfield County, Ohio

Source: Fairfield County GIS

**Edwards
AND Kelcey**

**Figure 2:
Existing Zoning**

July 21, 2004

0 0.25 0.5 1 Miles

