

MOORLAND



The Claremoor

Homes of exceptional quality
designed and built especially
for the modern young family

Builders

Barnett M. Grimes
Charles E. Conry

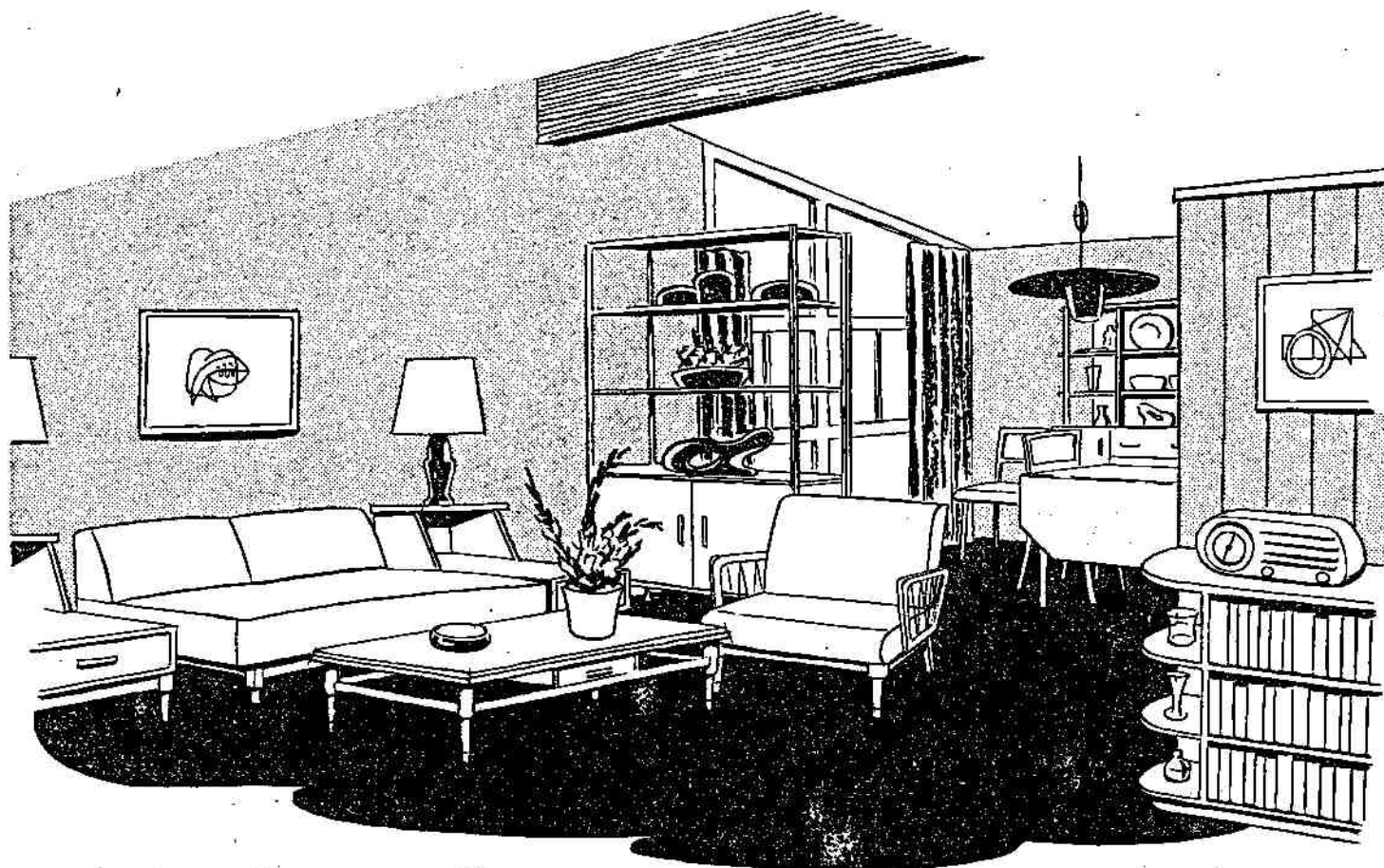
Architects

Edw. W. Augustus
John Dumas

Featuring...

G-E Electric Servants
in glorious Color-Styled Kitchens





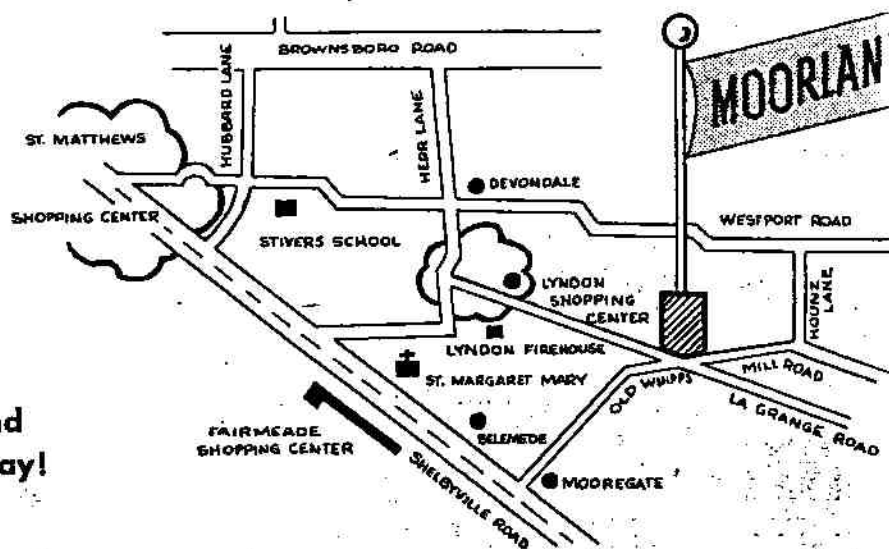
The Open Ceiling

... is one of the most refreshing ideas in modern home design. This high, canted ceiling gives an immediate feeling of vast space and brightness. Add a richly finished wooden center beam with smart floor-to-ceiling windows and you have a luxuriously styled room that blends beautifully with either modern or traditional furnishings. This Open Ceiling Living Room, normally found only in high priced homes, is available at no additional cost in all Moorland floor plans. Compare these other features of homes in Moorland and you'll agree that here is Louisville's biggest new home value:

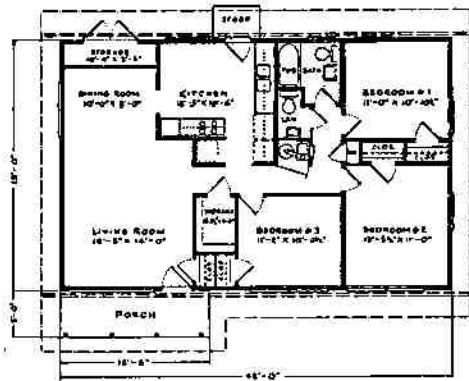
Features

- 11 different designs
- G-E Oven and range
- Public and School buses at subdivision
- Natural Birch cabinets
- 100 Amp electric service
- Blacktop driveways
- City water, gas and electricity
- Hardwood floors
- Ceramic tile bath
- 1 1/2 baths and 2 baths with family room
- 2 exhaust fans

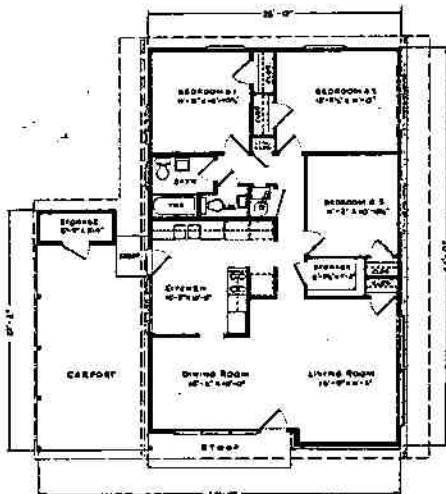
**In Moorland Homes, You will find
the Top Features in Housing Today!**



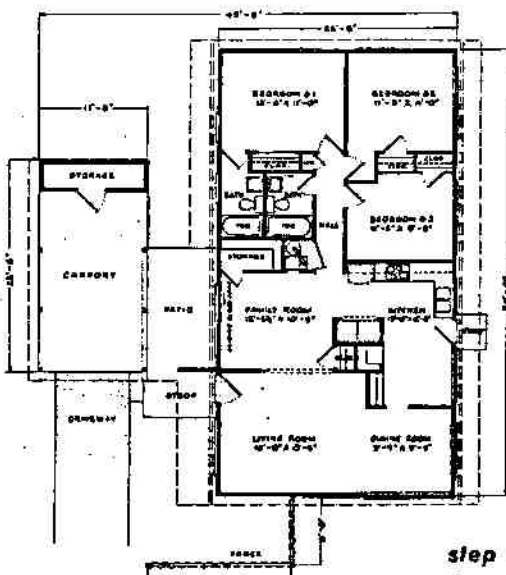
*More square feet of living area in every room
plus modern design and planning*



Plan B
\$13,800.
mo. pymts. \$84.41



Plan M
\$14,500.
mo. pymts. \$88.74

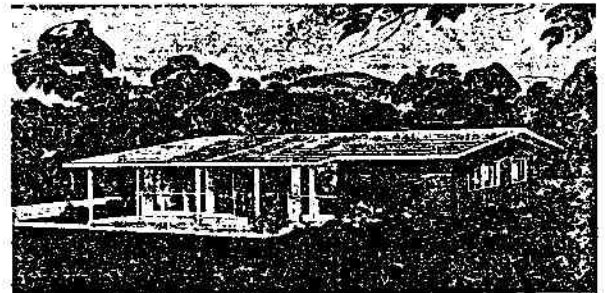


Plan C
\$15,500.
mo. pymts. \$90.00

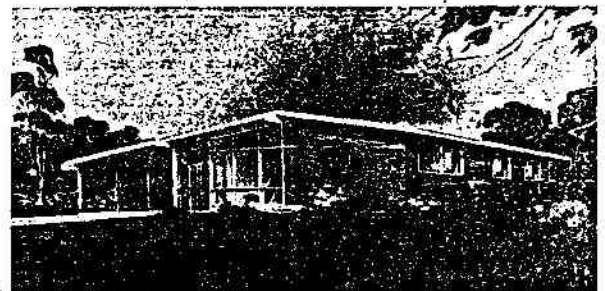
step saver
floor plans



The Brentmoor



The Somerset



The Moorland



The Maywood

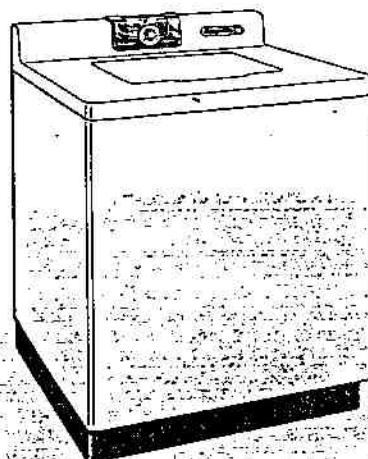
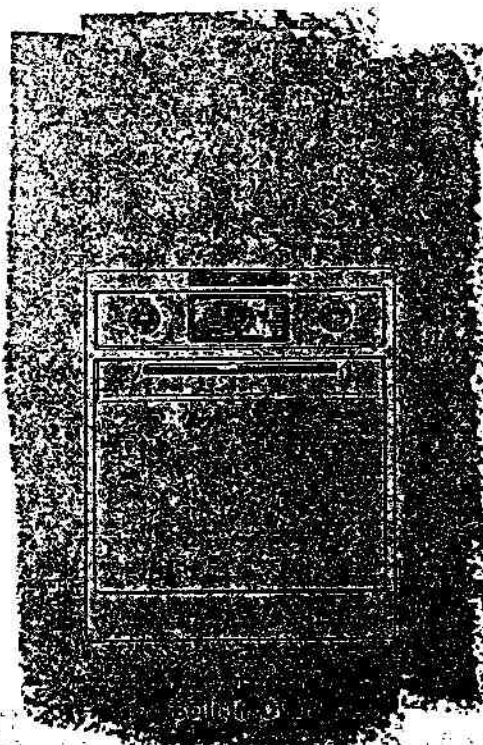


The Ashland

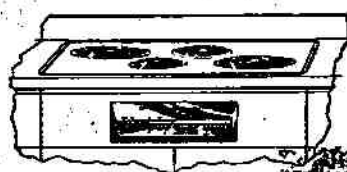


The Scott

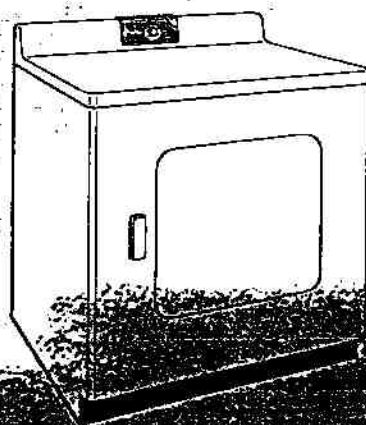
THESE G-E COLOR-STYLED
APPLIANCES ARE INCLUDED IN
THE PRICE OF EACH HOME . . .



Automatic Washer



Built-In Counter Top



Clothes Dryer



BUILDERS

Barnett M. Grimes, Inc.
Bismont-6424

Tw 5-6424

Chas. E. Conry
Anchorage-14524

CH 5-4167