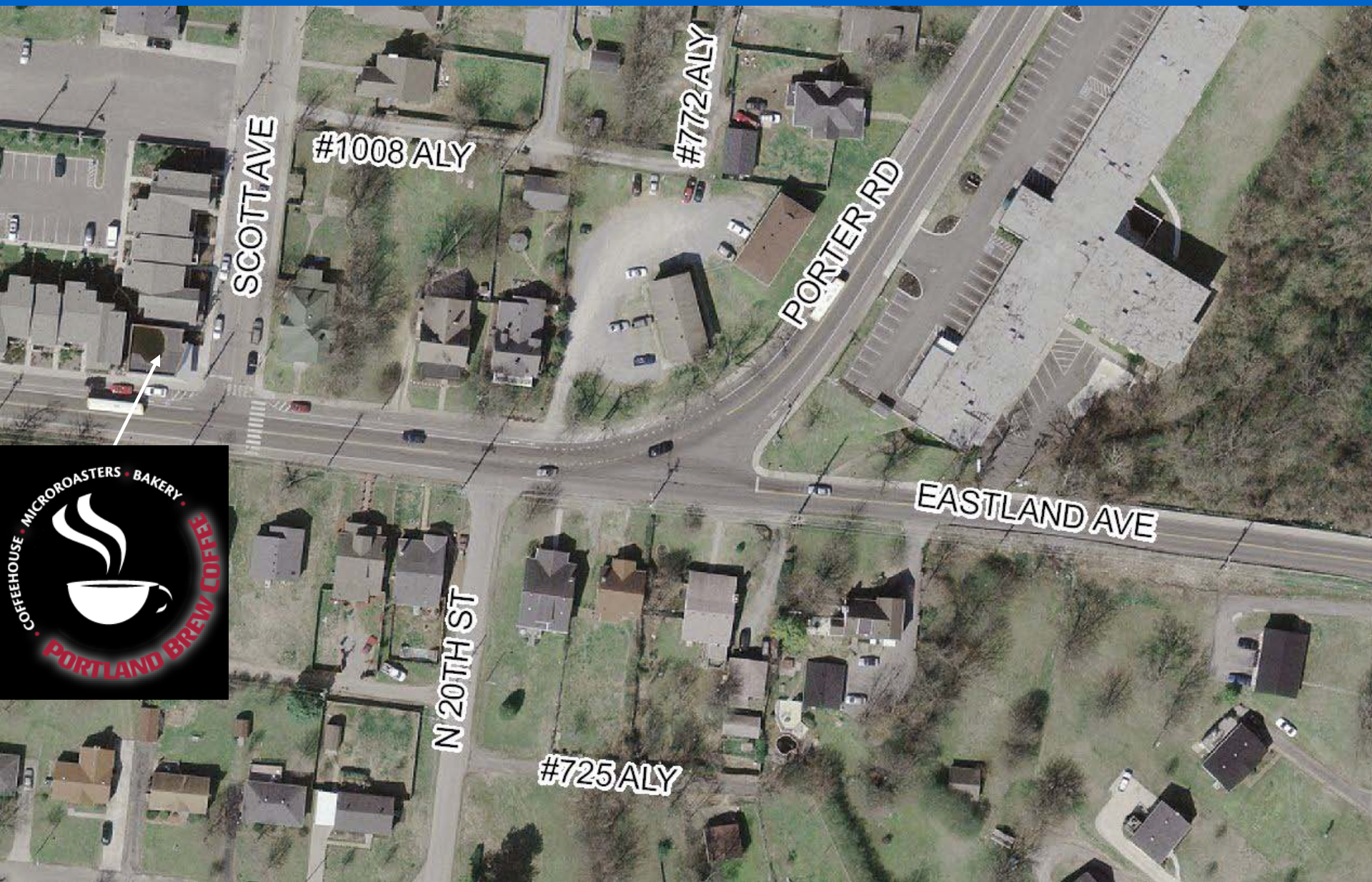


Intersection of Porter Road and Eastland Avenue

Collier Engineering Co., Inc.

Overview



EXISTING CONDITIONS

- Porter Road – Thru Traffic Condition at Intersection of Eastland Avenue
- Porter Road – Runs Generally North-South to Eastland Avenue and East-West From Intersection
- Eastland Avenue – Stop Traffic at Intersection of Porter Road
- Eastland Avenue – Runs East-West to Porter Road





PROBLEMS

- Difficult for Eastland Avenue Traffic to Merge Safely into Porter Road Traffic
- Difficult for Porter Road Traffic to Perform Left Turn Movement Safely onto Eastland Avenue
- Sight Distance Not Adequate for Eastland Avenue Traffic at Current Stop Location

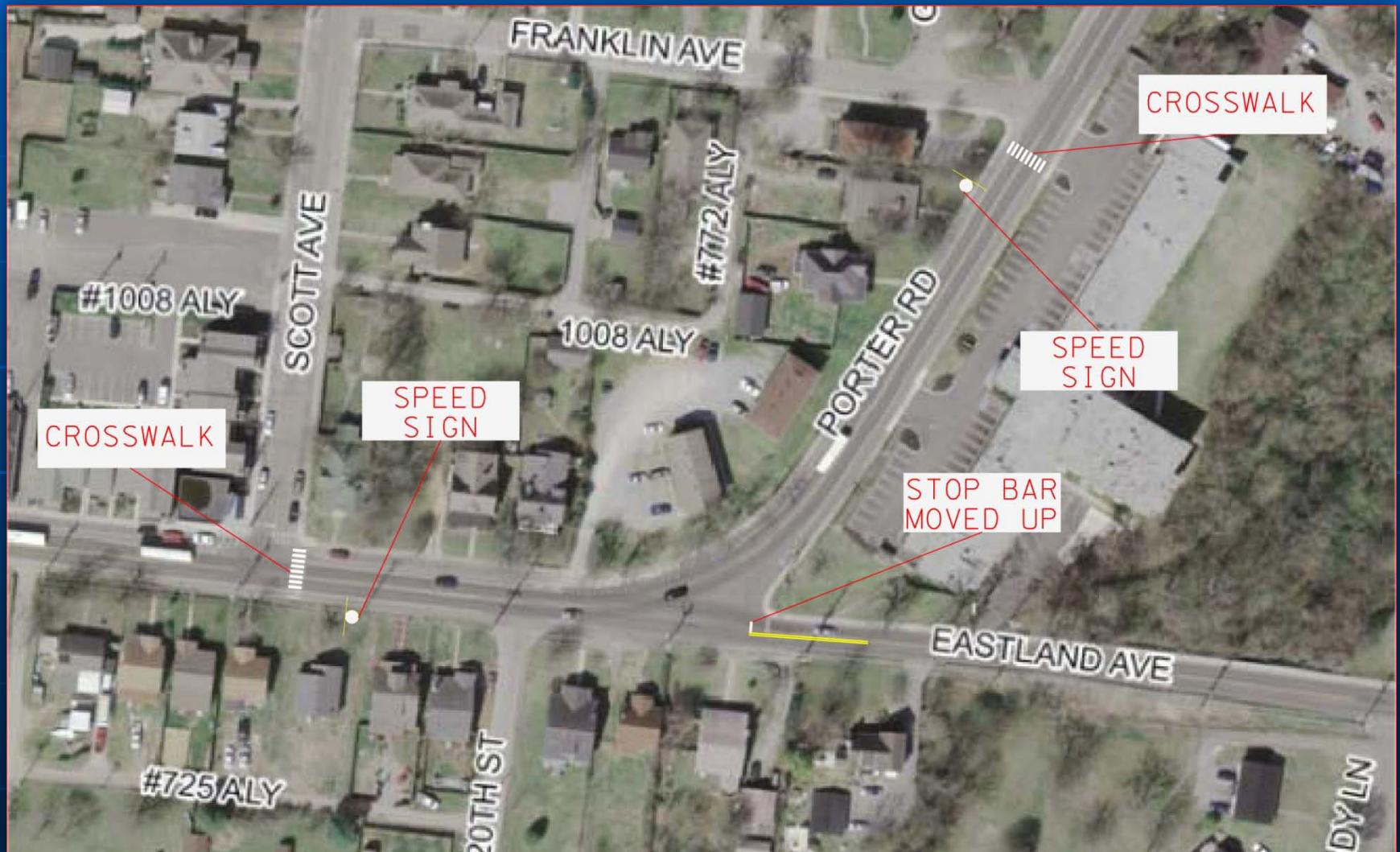
SOLUTIONS

- Improve Intersection Layout with New Alignment Design
- Channelize Traffic Flow with Pavement Markings and/or Concrete Islands
- Create New Stop Location for Eastland Avenue Traffic Improving Sight Distance
- Provide Early Warning Signs with Lights

SOLUTION 1

- Display Speed Signs
- New Stop Location for Eastland Avenue Traffic – New Stop Bar
- Additional Crosswalks

SOLUTION 1



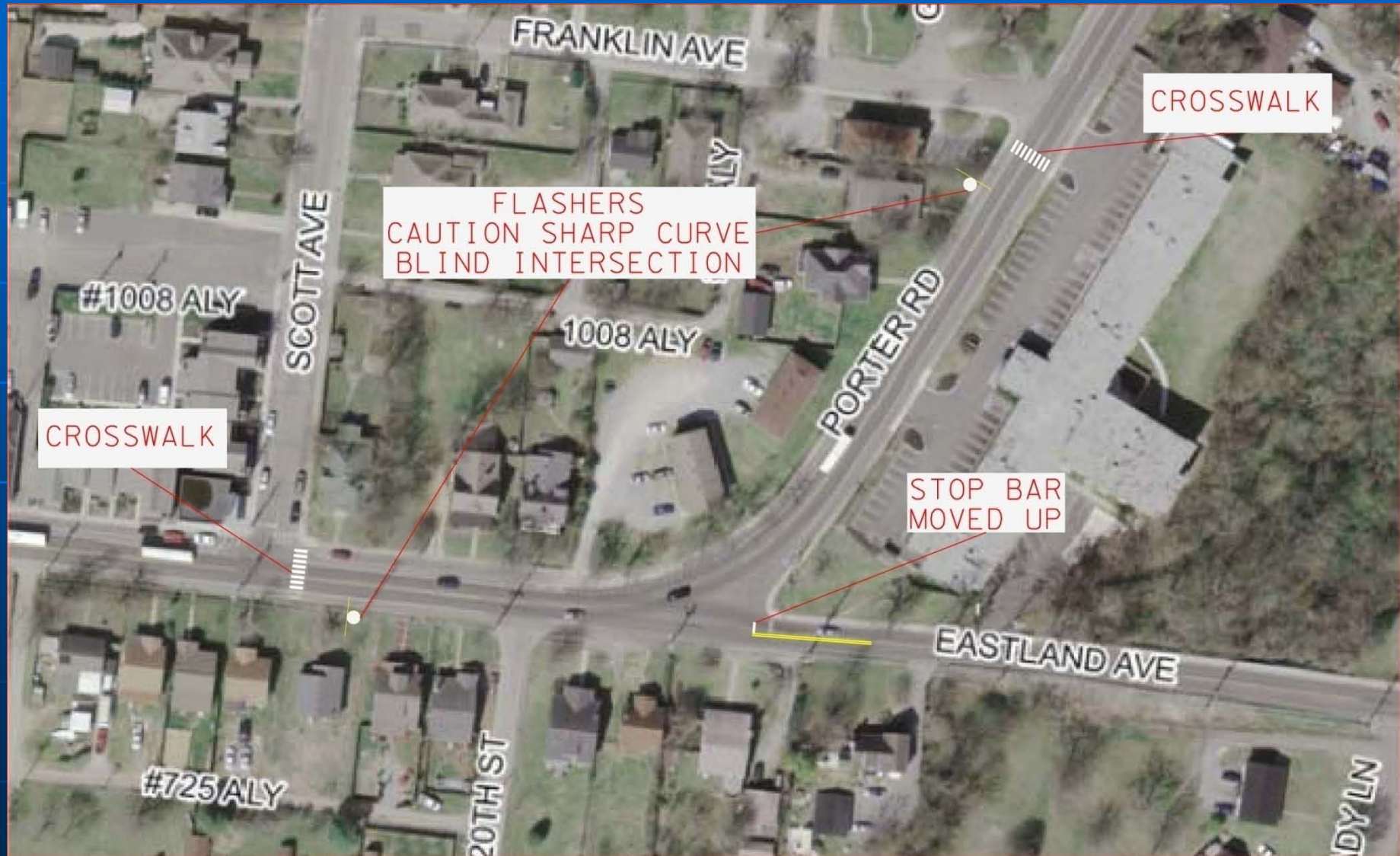
SOLUTION 1



SOLUTION 2

- Display Caution Signs with Flashers
CAUTION SHARP CURVE
BLIND INTERSECTION
- New Stop Location for Eastland Avenue Traffic – New Stop Bar
- Additional Crosswalks

SOLUTION 2



EXAMPLE - A



EXAMPLE - B

*Pedestrian Crossing Sign
(W112)*



*School Crossing Sign
(S11)*



SOLUTION 3

- New Intersection Layout
- New Stop Location for Eastland Avenue Traffic
- Channelize Traffic Flow with Pavement Markings
- Additional Crosswalks

SOLUTION 3

SOLUTION 3-A

- New Intersection Layout
- New Stop Location for Eastland Avenue Traffic
- Channelize Traffic Flow with Pavement Markings
- Channelize Traffic Flow with Concrete Islands

SOLUTION 3-A



SOLUTION 4

- Early Warning Signs with Lights
When Eastland Avenue Traffic Enters
Onto Porter Road
- Example Photos: Location at Sawyer
Brown Road and Plantation Court in
Bellevue, Tennessee

SOLUTION 4



SOLUTION 4



SOLUTION 4



SUMMARY

- Solutions can be used in Combination with Each Other
- All Solutions Require Modification of the Intersection of Eastland Avenue with Porter Road – New Stop Bars

SOLUTION 5

- New Intersection Layout
- 3-Way Stop
- Channelize Traffic Flow with Pavement Markings and/or Concrete Islands
- Additional Crosswalks

SOLUTION 5



Intersection of Porter Road and Eastland Avenue

Collier Engineering Co., Inc.