

A limited number of Liberty Elm trees are available for residents to purchase at a special reduced price of \$125 including delivery and planting. Only one tree is available per household and orders are filled on a first come, first served basis. Trees may be ordered by filling out the form below and mailing with a check made payable to the City of Southfield. Mail completed form and check to:

City of Southfield
Neighborhood & Information Center
26000 Evergreen Road, P.O. Box 2055
Southfield, MI 48037-2055

For more information, call Southfield's Neighborhood & Information Center at (248) 796-5140.

Name _____ Check # _____

Address _____

City Southfield State MI Zip Code _____

Home Telephone Number _____

Work Telephone Number _____

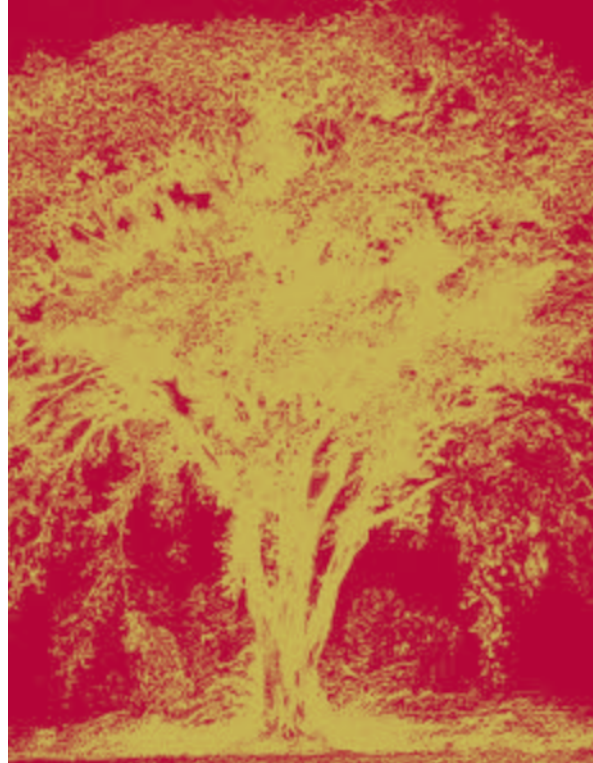
E-mail _____



CITY OF
SOUTHFIELD
50th Anniversary



COMMEMORATIVE LIBERTY ELM TREE PROGRAM



CITY OF SOUTHFIELD 50TH ANNIVERSARY COMMEMORATIVE LIBERTY ELM TREE PROGRAM

The City of Southfield will celebrate its 50th anniversary on April 28, 2008. To commemorate this historic occasion, the City and the Southfield Community Foundation are offering residents a special opportunity to purchase a commemorative American Liberty Elm tree at a **subsidized price of \$125**. This special reduced price also includes the delivery and planting of the tree! As a proud Tree City USA Award recipient for the past 23 consecutive years, what better way to celebrate Southfield's past, present and future than with a Liberty Elm? Planting a disease-resistant Liberty Elm tree is an excellent way to celebrate and commemorate Southfield's history while "planting" for its future.

DUTCH ELM DISEASE RESISTANT



The American Liberty Elm is the result of over sixty years of selection, research and breeding. The Liberty Elm was developed by the Elm Research Institute (ERI) to be resistant to Dutch elm disease. The American Liberty Elm is the only street-proven, disease-resistant elm tree with a lifetime warranty against Dutch elm disease. After more than 20 years of field tests, less than one percent of ERI's trees have been lost to Dutch elm disease. Since 1983, over 300,000 of these trees have been planted in more than 1,000 communities across the country.

ERI's AMERICAN LIBERTY ELM

The trees will be at least 10 to 12 feet in size (shipped in containers) that will fill out rapidly once planted. The American Liberty Elm grows very quickly, averaging two to three feet of growth per year.

The American Liberty Elm is also a long-lived specimen, with an average lifespan of 200-275 years or more. The trees typically reach 20 to 30 feet in height with a four to six inch diameter within ten years. The Liberty Elm will generally reach three feet or more in diameter in 100 years, with an average crown spread of 60-65 feet. Trees will develop the classic vase-shape of the American elm and can be expected to reach heights of 100 feet or more throughout their lifetime. These trees are ideal for street and residential planting with minimal correctional pruning required. An extremely

hardy tree, the American Liberty Elm is tolerant of conditions such as pollution, drought, salt and a wide range of temperatures, with few insect or disease problems.

PLANTING FOR THE FUTURE

What better way to commemorate Southfield's 50th anniversary today and for the future than to plant a beautiful Liberty Elm tree? These fast growing, long-lived trees will make an excellent addition to your yard and neighborhood. Continue to keep Southfield beautiful by making your contribution to our community and future generations with an American Liberty Elm tree. Celebrate Southfield's 50 years of history with a tribute that will last for many years to come by ordering your commemorative Liberty Elm for only \$125 today!

**Purchase your
commemorative
Liberty Elm tree
today for only \$125
including delivery
and planting!**

A wise and generous man plants trees under which he may never sit. □