

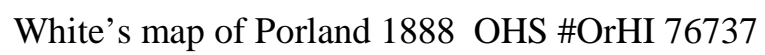


Buckman Neighborhood Plan

Bureau of Planning
Portland, Oregon

August, 1991

Adopted by City Council July 24, 1991
Effective August 23, 1991 Ordinance No.
164489



White's map of Porland 1888 OHS #OrHI 76737



Aerial view of Buckman neighborhood looking north.
(Lone Fir Cemetery on top right side of photo.)
Oregon Historical Society, #ORHI 51676/0358P122

Hawthorne Park circa 1885
Near SE 10th Ave. & Main St.



Discussion

Buckman's neighborhood identity rests on its 125-year history. This heritage should be preserved and promoted so that future Buckman residents can benefit from the neighborhood's interesting past.

A plan is essential to preserve Buckman's history and identify its historic resources. An updated inventory of historic properties should be completed and information on historic preservation provided to property owners. This inventory should incorporate not only the 28 historic sites currently designated as Historic Landmarks or National Register Properties, it should also recognize the historic significance of the "good old houses" and commercial buildings of the streetcar era in Buckman. While some of these properties have limited historic merit as individual properties, each contributes significantly to the historic character of the neighborhood. A historic landmark surrounded by convenience stores, fast-food restaurants and insensitive new housing development compromises the historic fiber of the landmark and the neighborhood.

One of the goals of the proposed rezoning pattern is to support the preservation of older homes which contribute to the historic fabric of Buckman. By

downzoning some areas and upzoning others, redevelopment pressures are more likely to be minimized in areas with significant numbers of viable, older homes and redirected to other areas within the neighborhood.

Two particularly notable historic resources in Buckman are Lone Fir Cemetery and the recently designated East Portland/Grand Avenue Historic District. Survey respondents and workshop participants indicated that they value these historic amenities, the old and historic houses and the treelined streets. The Historic Preservation section of the Buckman plan outlines a variety of methods to preserve these treasures for future Buckman neighbors.

Policy 3 Celebrate Buckman's heritage and preserve its historic character.

Objective 3.1	Promote an awareness of Buckman's historic identity.		A. Identify Buckman's historic resources. (BCA, National Register)
	A. Identify the architecture in Buckman by age, style, and unique characteristics, and publish this information. (BCA, National Register)		B. Update the City's inventory of Buckman's architectural, cultural, and historic structures and sites. (BCA)
	B. Produce written and graphic materials to describe and illustrate Buckman's historic heritage. (BCA)		C. Work with the Hawthorne Boulevard Business Association and the Historic Preservation League of Oregon to investigate nomination of identified historic places as a group submission. (HBBA, HPLO)
	C. Publish and promote self-guided walking tours of historic buildings and places. (BCA)	Objective 3.4	Discourage the demolition of buildings that have historic or aesthetic value.
	D. Organize an annual historic home and garden tour. (BCA)		A. Rezone 13th, 14th, and 15th Avenues and Ankeny, Madison, and Main Streets to preserve historic homes. (BOP)
Objective 3.2	Promote restoration and renovation of historic residential and commercial structures.	Objective 3.5	Encourage compliance with Buckman's architectural guidelines for all property restoration and new development. (see Appendix)
	A. Create a neighborhood preservation group to act as a clearinghouse for local labor, expertise, and information. (BCA)		
	B. Create an historic design district in Buckman east of 10th Avenue.(BOP)	Objective 3.6	Work to ensure that trees and other environmental resources are preserved as part of Buckman's historic streetscape.
Objective 3.3	Support programs, actions, and policies that will promote, retain, and manage Buckman's historic character.		A. Develop an inventory of trees and other environmental resources and work to ensure their preservation as part of Buckman's historic streetscape. (BCA)

Objective 3.7 Advocate the restoration, maintenance, and use of Lone Fir Cemetery as an historic resource.

A. Develop a plan to bring Lone Fir Cemetery into excellent condition. (Mult. Co.)

..

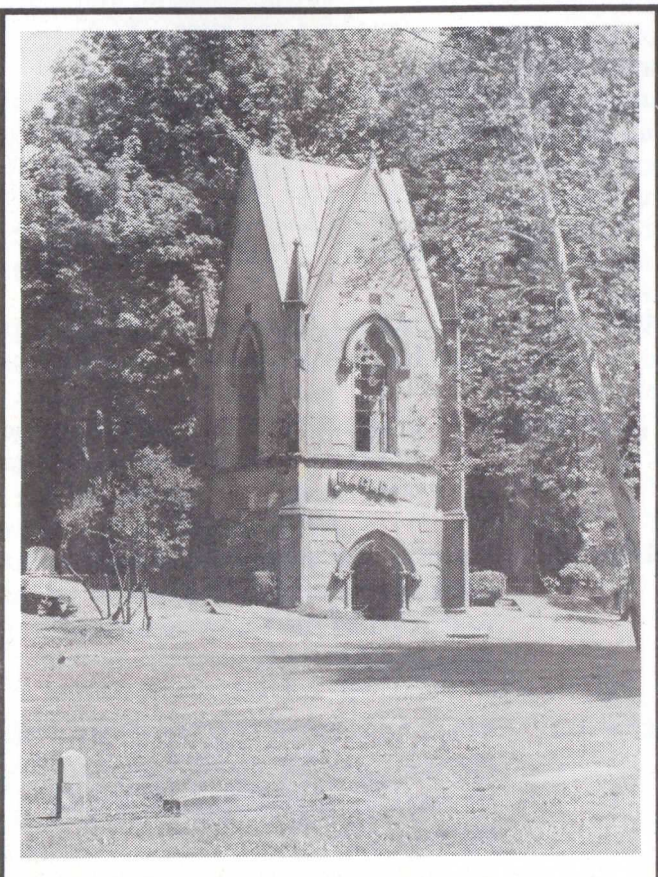
B. Organize volunteers to preserve and use the resources of Lone Fir Cemetery. (BCA)

C. Incorporate the word "Historic" into the official name of Lone Fir Cemetery. (Mult. Co.)

D. Clone the original "Lone Fir" tree to ensure that it lives beyond its natural life as the symbol of Lone Fir Cemetery. (Citizens, OSU Extension Service)

Objective 3.8

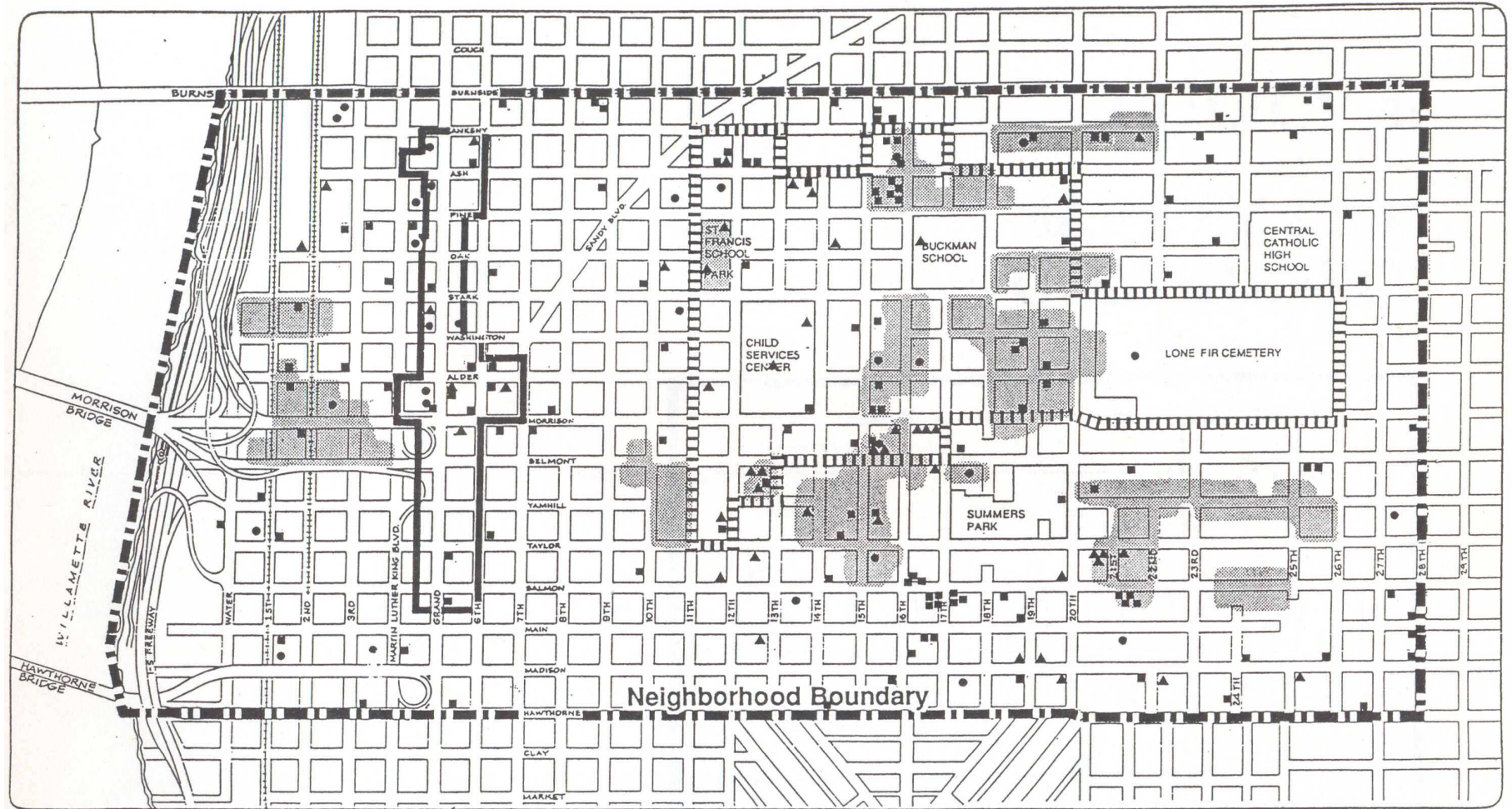
Support and promote the East Portland/Grand Avenue Historic District.



The Macleay masoleum
(a victim of vandalism)
Lone Fir Cemetery



Grand Avenue
Central Eastside Industrial District



Legend

- Circles = Historic Landmarks
- Triangles = Rank II buildings
- Squares = Rank II Buildings
- Shaded areas = Undesignated Ensembles
- Hatched Line = Potential Historic Districts Boundary
-based on 1978 BOP study.....

EXISTING AND POTENTIAL HISTORIC PROPERTIES AND DISTRICTS

