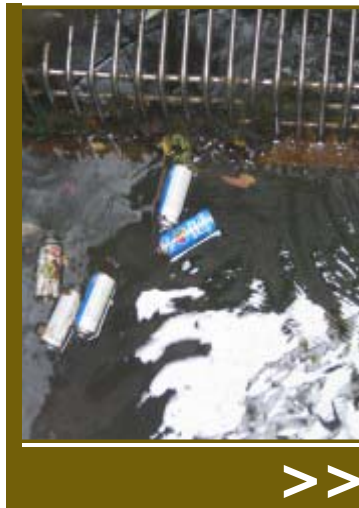
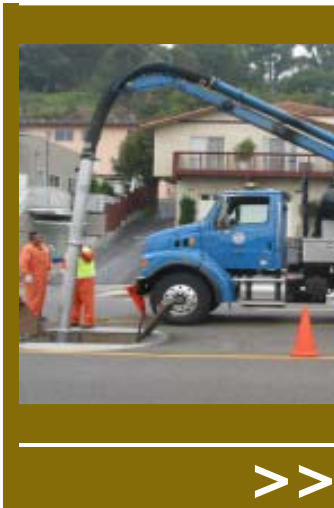


**August 4, 2005**

Santa Monica Canyon News

Low Flow Diversion Project Update



*Left to right: Special vacuum truck; yard waste and graffiti vandals' empty spray cans thrown into our channel; cleaned trash sump, note "stem wall" below rack*

Elizabeth Zaillian and George Wolfberg met this morning with Sanitation Engineer Alfredo Magallanes and the cleanout crew at the "trash sump" in West Channel Road next to the Golden Bull Restaurant. This sump contains a screen, "trash rack" made of stainless steel that filters out trash particles that flow down the channel, avoiding sending this material with the polluted water that is "diverted" from flowing to the beach and is instead sent to the Hyperion Sewer Treatment Plant. If you look closely you can see yard waste including branches trimmed from plants and trees and algae covered lawn waste and leaves. This debris clogs up the trash rack, reducing its ability to divert at its designed capacity of five cubic feet of water per second. With high flows from runoff and groundwater resulting from the heavy rainy season, the system has failed to divert enough water to avoid the beach obtaining an "F" grade on the Heal the Bay scorecard. Presently the City is vacuum out the trash sump on a weekly basis.

**IMPROVING THE FLOW.** The photo below shows the higher level of water coming in toward the rack than is exiting the rack. To improve the flow, the City proposes to remove the stem wall and replace the rack with a higher and wider rack with greater capacity to capture debris without reducing flow of diverted water. This is an emergency project and is being expedited. If the same systemic failure occurs next Summer, the city will be subject to daily fines of \$32,500 from the State Water Quality agency.



---

## **Report to Community Council**

Mr. Magallanes will be giving a status report to the Pacific Palisades Community Council at 7:00 PM on August 11 in the Pacific Palisades Library Community Room at 861 Alma Real. The original project, the only one of its kind, cost approximately \$970,000 to construct. It is not known how much extra capacity will result from the removal of the stem wall and upsizing of the trash rack.

Santa Monica Canyon Civic Association - <http://www.smcca.org>

P.O.Box 3441 ♦ Santa Monica, CA 90408-3441

---